

**Count**  
**GRAMALKIN**



**INTRINSIC**

**VALUES**

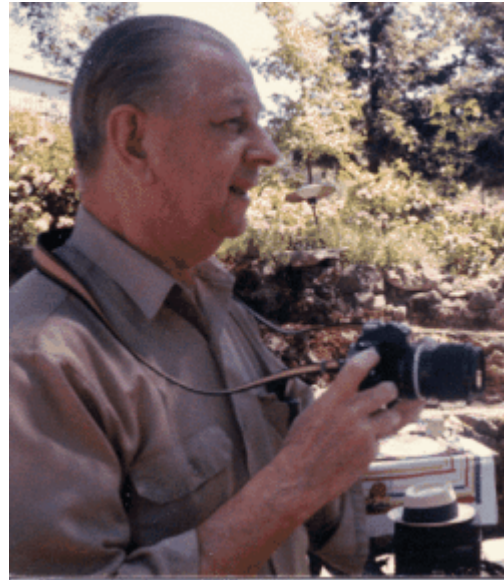
**OF THE**

**PLANETS**



<http://www.gramalkin.com>

\*\*\*\*\*



Cyril Fagan (1896-1x970)

Reverend John Mazurek (1919-2003)

By Fagan out of Mazurek



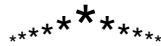
\*\*

“The Intrinsic Values of the Planets Delineation  
The San Francisco School of Sidereal Astrology Technique”

By

# Count Gramalkin

v4-24.12



# “Sidereal Horoscopes”

By

Count Gramalkin

Western Sidereal Astrology Zodiacal Fixed Zodiac Professional Astrologer

Spiritual Evolution Self Realization Truth Seeker Disciple - Truth Changes Not

San Francisco School of Sidereal Astrology Intrinsic Values of the Planets Technique of Delineation

<http://www.countgramalkin.com> 1 877 322 7238 Toll Free Order Number +Fax CountGramalkin@CountGramalkin.Com

## “The Art of Accurate Delineation”

Is The Individual, and the Collective Intermingling of the Intrinsic Astrological Variables Count +&- Use Applicable Adjectives The Star Science essence of perceiving, reading, delineating, the ebb and flow ratio proportions of the interaction stack up distribution between the Intrinsic Astrological Variables - The Astrology PHD the Piled Higher and Deeper. “Count Gramalkin™ ©1970 v2-14.12”

\*\*

First State Astrological Case Then Delineate

Example: The Planet = Subject. Constellation and Station = Application.

Sun in Aries. Read Sun = What; Read Aries (Mars) = How; On Ascendant Station = Where = You Are.

The Intrinsic Values Act Individually and Collectively.

Take the Intrinsic Value of one planet. It exists independently like it was the only one there. The Intrinsic Value of the other planet exists independently also. Due to the Law of Polarity (Yin Yang, + -) All the Intrinsic Values have higher =+ and lower self =- qualities.

Intermingle The Intrinsic Values They Also Exist Collectively

E.g. Jupiter = Happiness/Overindulgence. Venus = Love/Overindulgence. Jupiter Aspect Venus = Happiness/Love Double the Overindulgence.

Venus (Akin to Taurus & Libra) Psychological Positive = Love; Peace; Harmony; Beauty; Music; Musical: Art; Artistic; Sensuous; Charming; Femininity; Love and the capacity for love; Love nature and artistic temperament; Romantic Heart.

Jupiter (Akin to Sagittarius) Psychological Positive = Philosophical; Cheerful; Happy; Joy; Rejoice; Gay (Joyous); Optimistic; Hi-minded; Honorable; Professional; Religious; Nature Loving; Law-abiding; Aristocratic; Just; Aspiring; Opulent; Benevolent; Congenial.

Venus Jupiter Aspect Psychological Positive = Philosophical; Love; Cheerful; Peace; Happy; Harmony; Joy; Beauty; Rejoice; Musical: Gay (joyous); Artistic; Optimistic; Sensuous; Hi-minded; Charming; Honorable; Femininity; Professional; Love and the capacity for love; Religious; Love nature and artistic temperament; Nature Loving; Romantic Heart; Law-abiding; Aristocratic; Just; Aspiring; Opulent; Benevolent; Congenial. Read the ebb and flow ratio proportion interaction distribution stack up between the Intrinsic Astrological Variables.

To See How The Intrinsic Values Will Manifest.

Repeat the “Individually and Collectively Intermingling” Process With Their “Station and Situation.”

Example: Venus =Love; Peace; Harmony; Beauty; Music; Sensuous; Charming / Lazy Overindulgence on Station Nadir = Spouse is. On the Midheaven station = Career is.

In Taurus gives a nice Artistic Love foundation.

In the Saturn Lunar Mansion of Taurus = Happiness, Love, Artistic, add Stubborn, Frustrated and Denied, Patient and Practical heavier on the Overindulgence eTc.

Square Uranus the Intuition aids, ad’s excitement eTc eTc eTc.

Count Score On +&- To Read Higher/Lower Self, Yes/No/Maybe eTc.

Sun & Moon are lights & illuminate whatever is there; Mercury is neutral and expresses whatever is there; Jupiter, Venus, Uranus, Superior Angles = good +; Mars, Saturn, Neptune, Pluto, Inferior Angles = bad - = Most Common Manifestation Especially In Transit.

To delineate in any given sphere Use the Intrinsic Adjectives common to that sphere.

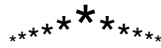
E.g. Venus - Psychologically = Love & Peace. Mundanely = Food & Clothes. Medically = Kidney eTc! ETC!!

## The Art of Synthesis

To Synthesize a horoscope chart first look at the Sun taken by it’s self, then Moon by it’s self (Angular? Sign; Watch; House; Arabic Lunar Mansion), the Ascendant then Midheaven by their self (four equal quarters). Then the Angles (which solar cross/split cross eTc.), the most angular planet and its situation, the next most angular situation. There are usually two or three basic “the next most Angular situations.”

## Manifesting

When there is an orange tail sticking around the corner and one grabs the tail rather than having a tail one actually has the entire Tiger. So it is with the “Intrinsic Values of the Planets.” When one identifies having hold of any part of an Intrinsic Value one actually has the entire planet (or Sign) by the tail. When one is happy one has Jupiter by the tail and therefore all of the Jupiter qualities good and bad. The idea is to consciously project the “higher self” or positive qualities of the Intrinsic Value of case rather than “lower self-essence dominated reacting” with the lower self-qualities. Read the Intrinsic Value of the planet in your notes and send out the + side. Also read the “Satsang”, “Self Realization” and “Daimoku” articles on CountGramalkin.Com and it will help you cope with all that reality nonsense. Be your HIGHER self.



\* \* \*

# “Sidereal Horoscopes”

By

Count Gramalkin

\*

Western Sidereal Astrology Zodiacal Fixed Zodiac Professional Astrologer

Spiritual Evolution Self Realization Truth Seeker Disciple - Truth Changes Not

San Francisco School of Sidereal Astrology Intrinsic Values of the Planets Technique of Delineation

<http://www.countgramalkin.com> 1 877 322 7238 Toll Free Order Number +Fax CountGramalkin@CountGramalkin.Com

\*

Reverend Professor John Mazurek

San Francisco School of Sidereal Astrology Director

"Planetary Notes"

\*\*

The angles symbolize the periphery of the fully awakened consciousness and indicate the lines of demarcation between the subjective and objective worlds. In particular the fixed stars that rise at the moment of birth, modified by the constellation than holds the Sun and the Moon, and by the influences of the planets that are in powerful configuration with the rising stars....these describe the signature of the physical body, will power, with its innate hereditary traits, but under no circumstances can the ascendant describe one's mannerism, moods and habitual and often and often unconscious behavior. Editors note: In his later years long after this was written Mazurek used to say the rising sign acts akin to a second moon and colors the mind, Count Gramalkin.

\*

One's personal idiosyncrasies, the way on gesticulates, talks, walks, laughs, cries, eats and sleeps, the pattern of one's appetites and the state of one's health are signified by the Moon's configuration with the planets and the fixed stars.

\*

One's personal idiosyncrasies, the way on gesticulates, talks, walks, laughs, cries, eats and sleeps, the pattern of one's appetites and the state of one's health are signified by the Moon's configuration with the planets and the fixed stars.

\*

The Sun symbolizes energy or life, which physiologically expresses itself as vitality, and psychologically as desire....which in its momentary frustration gives rise to self-consciousness, which in turn solidifies into the Ego or Self. Hence the core of the individual, what he is at heart, his proclivities and character, and in short, his very being, signified by the Sun's configuration with the planets and fixed stars.

\*

Therefore the natal Sun symbolizes all isolation and self-centered activities, the quest for supremacy, recognition, honor and fame, and the thirst for glory and renown. Should the Sun be in the foreground configured with the benefics, there will be garnered a full measure....but should it be located in the remote background and configured with malefics or even unaspected, the native will be without ambition and, with some exceptions, his name will not be inscribed in the Hall of Fame.

\*

Should the Sun be on or in the angles, but afflicted by the malefics, the native will hold the headline's of the world's press for a while, but die in oblivion, if not branded and execrated. When the Moon is in conjunction or opposition or angular aspect to the Sun, the manner tends to be lordly and condescending.

\*

In a large family of boys born in humble circumstances, only one had the Sun in conjunction with Jupiter. In his case the conjunction fell in the 10th house. By his own diligent efforts, he rose to be one of the most successful and respected members of his native city; while his brothers remained as they were born, little better than paupers.

\*

Moon

If the student of Astrology is at all aware of the thoughts that uninvited flit across his mind, he may notice that the Moon is transiting across his natal Sun, and he tends to indulge in idle daydreams wherein he figures as the hero in some exciting adventure or melodrama.

\*

Progressions of the Moon

As a general rule, progressions and transits of the Moon to a planet signifies the emotional actions of the native....what he does to others. On the other hand, progressions and transits of the planets to the Moon....signify the reactions of the native to the actions taking place in one's environment. That is, reacting to what other people do to the native.

\* \* \*

## Mercury

Note: Mercury is the planet of self-expression. It symbolizes the processes of verbalization, writing and communication, and the nature and manner of one's conversation can be gleaned from the planet Mercury and its configuration with other planets.

Mercury the planet of thieves and mercenaries, When found in the foreground of charts, awakens and activates the intellectual activities of the native. Causes the native to impart information to others such as through teaching, selling, lectures, instruction, writing, publishing or debating. Generally speaking, Mercury signifies one's mechanical and mathematical ability and capacity to absorb and impart information. When one's Mercury is conjunct or opposite to the Sun of someone else, the Mercury native will impart ideas that influence the Sun native.

## Venus

Venus is the planet of Peace, and Love and Venus symbolizes the "romantic heart" of the native, the love he feels and gives another. Venus is "in love" with any planet with which it is configured at birth not excluding malefics. The types of humanity which win the affections of the native may be deduced by the constellation occupied by Venus at birth; that is, in the birth horoscope chart. For examples, if Venus is found in Aries, affection may be lavished on those who wield power. Venus in Sagittarius has affection for clergymen, doctors and the titled. Venus in Aquarius, the interest would be for those who express a liking for exotic, or out of the ordinary subjects.

The Venus constellation often describes the fetish or the frustrated. When Venus is in the foreground or in elevation in the birth chart, the native is dominated by their love for others, often to the point that nothing else matters, so that love is the motive for one's existence. Known as "Venerable" Venus may, in advanced years and in a position to do so, become noted for charity. In youth, the native is a Casanova. Venus in a subordinate place in the birth chart will tend to delay or deny love and marriage of the native.

Venus in a subordinate place in the birth chart will tend to delay or deny love and marriage of the native.

## Mars

Unpolished, rough, uncouth, noisy and loud-mouthed, prone to swearing, wiry, muscular and spoiling for a fight...hotheaded, impetuous, exalting in conflict. Mars or Aries is reckless, brave, easily succumbing to temptation, delighting in sport, machinery and mechanics, daring, often untidy. These are the characteristics of those born with Mars in the foreground. Mars is the Killer, the destroyer...who destroys for the pleasure of it. The exercise of power gives one immense gratification, but there is nothing essentially evil or vindictive about these Mars characters or personalities.

## Jupiter

Jupiter bestows quality and richness. This, the greatest of the planets, ennoble the influences of every planet it confabulates, preserving, healing, and protecting. In every sense, it represents the Good. It represents the best of everything, clothes, schools, social life, in short, The Good Life. Those whose monies are derived from land, real estate, wills, legacies, bequests, interest on money held in trust...have Jupiter configured with Saturn Nataly. Jupiter configured with Uranus amasses money through speculation. The world of Show Business, the entertainer finds, will bring prosperity when Jupiter and Neptune are configured in the natal chart; but the money is soon dissipated. Jupiter configured with Pluto denotes ill-gotten money.

## Saturn

This is the planet of conformity, inferiority, orthodoxy, economy, complexities, fear and hate. Configured with the Lights means all of the preceding, but also prudence...a talent for organization...and patience. It denotes longevity, Father Time, the dead, and land.

## Uranus

The planet always found in the vanguard of advanced movements, revolution, the discarding of the old or outmoded. This is the planet of intuition, the inventor and scientist, and typifies the computer age. True Uranians are inspired geniuses of humanity, although in politics such people seem dictatorial simply because most of their fellow-men are too slow witted to keep up with them.

## Neptune

The planet Neptune causes confusion so that the native becomes completely flurried. Neptune is the cause of an indefinable sense of inadequacy, that makes the native avoid responsibility and desire to escape into a secluded and leisurely world or congeniality a world of one's own choosing or making...frequently through alcohol or drugs. Art, music, fiction and science are the forte of Neptune.

## Pluto

Pluto is a solitary worker, a poor mixer, and the eternal lone wolf. Sooner or later he breaks from his home, putting behind him all it represents in tradition and orthodoxy, or respectability, for the Pluto native is the eternal rebel. Shyness, crises, accidents, bickering, death, miracles and diffidence, remoteness, austerity and a sardonic smile are characteristics of this planet.

\*\*\*

\*\*\*

## INTERPERSONAL RELATIONSHIPS

\*\*

The study of interpersonal relationships involves the comparison of the planets and luminaries in one person's horoscope chart with the planets and luminaries in another's chart. Comparing the zodiacal celestial longitude positions does this, primarily by conjunction or oppositions with the planets of another. It is our contention that with no planetary interchange, there will not be a significant relationship, if in fact any relationship at all.

\*

We have listed the nature of the various relationships which have been ascertained through considerable testing and analysis.

\*

Carl Jung, the noted psychoanalyst, did an inter-personal study involving just such chart comparisons as we have mentioned. In his book "The Structure and Dynamics of the Psyche" he relates his study which involves the comparisons of the horoscopes of 483 married couples. The horoscopes were then compared to ascertain what planetary inter-changes were present in the charts of each of the married couples.

\*

While this study was more quantitative than qualitative in nature, it did give succeeding researchers a starting point for interpersonal analysis.

\*

Cyril Fagan, the father of modern day sidereal astrology and Thomas R. Stanton, of the Sidereal astrology school in Los Angeles, among others, have done considerable work on this field.

\*

We suggest that you test the effectiveness of the combinations for yourself, as there is no substitute for actual experience.

\*

By constellation via the five major aspects conjunction, opposition, square, trine, sextile you receive what planets are touched off in your chart. You give what planets are touched off in their chart. The Sun always gives you get what planets in your chart their Sun aspects. Planets give to angles; their planet on your angle equals what they give you

\*

Sun to Sun = Good for business or friendship but not for romance.

\*

Moon to Moon = Good for happy, lasting relationship. The emotions are in harmony. A good natural rapport exists.

\*

Sun to Moon = Good for marriage for the Sun will "love" the Moon and the Moon reciprocates. The Sun leads and or "rules" and the Moon will usually go along with the Sun's wishes. This is an excellent combination for emotional rapport or ease relationship with one another. You feel comfortable with each other and find companionship very easy and unrestrained. This is a type of relationship one which one can sit together and be comfortable without feeling any strain in the relationship. With many people, you feel you have to do something of keep things going.

\*

Sun or Moon to Mercury = This is not a romantic combination, there is an ability to communicate with each other.

\*

Sun or Moon to Venus = This is a romantic aspect. Venus in a chart relates to our capacity to love. Therefore, the Sun or Moon turns this on.

\*

Venus will be devoted to the Sun, being "in love" with the appearance, the spirit and the outlook of life of the Sun. Venus will love the Moon's behavior and bearing. This aspect is good for an enduring romance, understanding and companionship.

\*

Sun or Moon to Mars = A good configuration for lovers but not always a good combination for a lasting tie. There is a strong attraction though it relates primarily to the passions.

\*

With the Sun and Mars, each tries to dominate the other and Mars may at times irritate the Sun though the Sun can handle Mars.

\*

The Moon is no match for Mars, Mars teases and tantalizes the Moon and loves to arouse the Moon's temper. With only this aspect, the "honeymoon" may soon be over and arguments ensue, for passion can easily turn to hatred.

\*

Sun or Moon to Jupiter = Jupiter will want to give to the Sun or Moon. It is good an "all around existence" together, though not a romantic aspect.

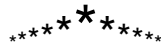
\*

Sun or Moon to Saturn = This combination is not common in marriage or friendship and is rarely a happy one. Saturn tends to constrict or limit the luminaries and "clings" to them for security. The Sun feels "trapped" by Saturn.

\*

Editor Note: Zero notes from this piece could be found about Uranus, Neptune or Pluto. However the most common manifestation of Uranus is excite, Neptune is confusion and Pluto crises.

\*\*\*



\*\*\*

## “Sidereal Horoscopes”

By

Count Gramalkin

\*

Western Sidereal Astrology Zodiacal Fixed Zodiac Professional Astrologer - Tarot

Spiritual Evolution Self Realization Truth Seeker Disciple - The Truth Changes Not

San Francisco School of Sidereal Astrology Intrinsic Values of the Planets Technique of Delineation

Read the ebb and flow ratio proportions of the interaction stack up distribution between the Intrinsic Astrological Variables

Due to the Law of Polarity Yin Yang+ - Planets Have Higher / Lower Self Qualities Count Score On +&- To Read Higher/Lower Self, Yes/No/Maybe e/c.

Most Common Manifestation=(mcm) Especially In Transit = Sun & Moon are lights & illuminate whatever is there; Mercury is neutral and expresses

whatever is there; Jupiter, Venus, Uranus, Superior Angles = benefic good +; Mars, Saturn, Neptune, Pluto, Inferior Angles = Malefic bad -.

<http://www.countgramalkin.com> 1 877 322 7238 Toll Free Order Number +Fax CountGramalkin@CountGramalkin.Com

\*\*

*“San Francisco School of Sidereal Astrology Intrinsic Values of the Planets Delineation v2-6.12”*

### “Sun”

v2-6.12

1) Psychological:

(Akin to Leo)

Positive:

Spirit; Character; Consciousness; Awareness; Energy; Vitality; Life; Life Force; Supremacy; Basic Intelligence; Seat of Intelligence; Recognition and Honors; Dignity; Health; Self Promotion; Authority; Progress; Individuality; Magnanimity; Generosity; Common Sense; Self; The God-Head part of our self; Zenith of Spiritual Qualities (e.g. Illumination, Seership). “Count Gramalkin™ ©1970”

Negative:

Egotistical=mcm; Conceited; Tyrannical; Domineering and Opinionated.

\*

2) Physical: Energy and Drive; Radiation of Life Force; The body (at this level the body is quite often surrounding the consciousness);

Lean Physique; Right Eye (Spirit Window), Nostril, hand; Left-Brain; Masculine; Positive; Heat. (Leo = Shin; Ankle; Eyes I.E. Sight).

3) Medical: Eyes; Cell Salt? = Magnesia Phosphorica (M.P.), Gold.

4) Mundane:

Kings; Men; Presidents; Emperors; Commanders; Centers of Power; High Places; Executive Ability, You Personally; Religious Zeal; The Wife (in the husbands chart); Banks; Bankers; Yellow, Orange, White?, Gold (color and metal); Ruby; Amber; Father; God (masculine); Masters, Guru, Godhead; God of War; Most important planet in the “Natal Chart”; “Giver of Life”, “Taker of Death”; The heart of a person or matter; Illuminates whatever aspected to; How your friends or family know you; Acts of the self; #4 by night? By day #1. During deep sleep without dreams one is entranced in Spirit. Look with both of your eyes into the right eye see the window to the spirit looking into the left eye is the window to the soul.

\*\*\*

### “Moon”

v2-6.12

1) Psychological:

(Akin to “Cancer”)

Positive:

“Quantity and Quality” of the Mind; Soul; Emotions; Feelings; Personality; Psychic; Carnivorous Appetite; Astral, Astral Plane, Astral body; Sensitivity; Protectiveness; Compliance; Flexibility; Love of Home; The Servant or Service.

Negative:

Egotistical=mcm; Unstable; Petty; Immature; Frivolous, Changeable; Vacillating; Deluded; Clings too past.

\*

2) Physical: Mind? Left Eye (Soul Window), Nostril, hand; Right-Brain; Feminine. (Cancer Knees).

3) Medical: Mind; Knees; Convulsions; Cell Salt? = Calcarea Phosphorica (C.P.) Silver.

4) Mundane:

Civil Service; Social Workers; Groups; Mobs; Crowds; Followers; Mothers; The Mother Church; The Husband (in the wife’s chart); Response to others acts; The Sea; Liquids; Negative; White, Silver (color, metal, & cell salt); Pearls; #7 by night? By day #2; Feminine; During sleep with dreams one is entranced in Soul. Cut hair waxing = grow fast and full, Waning grow slow and thin.

\*\*\*

\*\*\*

\*\*

\*

## “Mercury”

v5-15.11

1) Psychological: (Akin to “Gemini” & “Virgo”)

Positive:

Intellect, Intellectual Activity; Educational Capacity; Logic; Acquisition; Adaptability; Dexterity; Youthfulness; Conversation; Mathematics.

Negative:

Autoreact / talk=mcm; Restlessness; The Wanderer; Nervousness; Dishonesty; Forgetfulness; Lack of concentration; Over-talkative; Prone to react with pre-conceived opinion; Intellect is different than true intelligence (Sun). Mercury may be able to remember and quote data however often has a shallow superficial understanding of the “Big Picture.”

\*

2) Physical: Rules Lungs; Larynx; Bronchial Tubes; Hearing; Arms; shoulders and hands; Mouth. (Gemini = Eyes; Lungs; Nerves?; Virgo = Feet; Emerald).

3) Medical: Speech Defects; TB; Pneumonia; Cell Salt? = Kali Muriaticum (K.M.) (Gemini?), Kali Sulphuricum (K.S.) (Virgo?), Quicksilver, Mercury. “Count Gramalkin™ ©1970 <http://www.siderealastrology.net>”

Mundane:

Job; Schools and places of learning; Communication; Media; Telephone; Teletype; Mental Telepathy; Emerald; Green; Amethyst; Quartz Crystal; Travel; Talk; Hear; Teach; Study; Learn; Read/Write; Business; Selling; Salesmen; #5; How we interpret sensory input/output; Known to live by wits; Talks about what aspected to; The planet of thieves and mercenaries; Mercury is the planet of self-expression. It symbolizes the processes of verbalization, writing and communication, and the nature and manner of ones conversation can be gleaned from the planet Mercury and its configuration with other planets. When found in the foreground of charts, awakens and activities the intellectual activities of the native. Causes the native to impart information to others such as through lectures, instruction, writing, publishing or debating. Generally speaking, Mercury signifies one’s mechanical (?) and mathematical ability and capacity to absorb and impart information. When ones Mercury is conjunct or opposite to the Sun of someone else, the Mercury native will impart ideas that influence the Sun native.

\*\*\*

## “Venus”

v5-15.11

1) Psychological: (Akin to “Taurus & Libra”)

Positive:

Love; Peace; Harmony; Beauty; Musical: Artistic; Sensuous; Charming; Femininity; Love and the capacity for love. Love nature and artistic temperament; Romantic Heart.

Negative:

Vain; Selfish; Lazy; Overindulgent=mcm; Obese; Vulgar; Inconstant; Party Animal.

\*

2) Physical: Throat; Thyroid; Kidneys. (Taurus = Pallace / Sex Organs; Libra = Head; Face).

3) Medical: Cell Salt? = Natrum Phosphoricum (N.P.) (Libra?), Natrum Sulphuricum (N.S.) (Taurus?), Copper.

4) Mundane:

Divine Protection; Tolerated; Finery; Shoes; Food; Clothes; Jewelry; Diamonds; Poetry; Entertainment; Friends; Music; Graciousness; Lyricism; Desirability; Femininity; Attractive; Beautiful; Gifts; Wealth; Blue; Women; The Beloved; Theater, Opera; Melody and Song; Social Clubs; Beauty Salons, Sweets; Spices; Perfumes; Copper; #6. Art and Artistry; The art world; Centers of fine art; Art Galleries; Babies and small children; Loves whatever it is aspected to. The planet of peace and love. Venus symbolizes the “Romantic heart” the love one feels and gives another. Venus is “in love” with any planet with which it is configured at birth, not excluding the malefics. The type of humanity which wins the affections of the native may be deduced by the constellation occupied by Venus at birth that is in the Natal birth chart. For example, if Venus is found in Aries, affection may be lavished on those who wield power. Venus in Sagittarius, affection for clergymen, doctors and the titled. Venus in Aquarius, the interest would be for those who expresses a liking for exotic or out-of-the-ordinary subjects. The Venus constellation often describes the fetish of the frustrated. When Venus is in the foreground or in elevation in the birth chart, the native is dominated by his love for others, often to the point that nothing else matters, so that love is the motive for one’s existence. Known as “venerable”, Venus may, in advanced years and in a position to do so, become noted for charity. In youth the native is a Casanova. Venus in a subordinate place in the birth chart will tend to delay or deny love and marriage for the native. “Count Gramalkin™ ©1970

<http://www.loveadvice.biz>”

\*\*\*

\*\*\*

\*\*

\*

## “Mars”

v5-15.11

### 1) Psychological:

(Akin to “Aries”)

Positive:

Brave; Heroic; Courageous; Competitive; Pioneering; Executive Go-getter; Leader; Political; Action; Adventure; Spontaneous; Passionate; Sex.

Negative:

Impatient / Impulsive=mcm; Restless; Temperamental; Irritable; Headstrong; Foolhardy; Reckless; Wild; Vicious; Violent; Stress; Strife; Argumentative; Destructive; Bad-tempered or Quick-tempered; Aggressive; Brutal.

\*

2) Physical: Genitalia; Muscles; Red Corpuscles. (Aries = Buttocks; Lumbar Region; Kidneys; Ovaries / Womb?).

3) Medical: Cuts; Wounds; Operations; Fevers; Inflammation; Anemia; Flu; Headaches, Tension (?); Cell Salt? = Kali Phosphoricum (K.P.) (Aries), Can be Calcarea Sulphurica (K.S.), Iron, Iodine. Count Gramalkin®™©1970 <http://www.solunars.info>”

4) Mundane:

Sex; Machinery and Mechanics; Motors; Motor Vehicles; Disturbances; Explosions; Thunderstorms; Riots; Wars; Warrior; Coral; Iron; Red; Unpolished; Rough; Uncouth; Noisy and Loud-mouthed; Often Untidy; Prone to Swearing; Wiry; Hot-headed; Impetuous; Reckless; Daring; Brave; #9; A man in the prime of life; Muscular and spoiling for a fight; Delighting in sport; Exalting In conflict; Easily succumbing to temptation. These are the characteristics of those born with Mars in the foreground. Mars is the killer, the destroyer -- who destroys for the pleasure of it. The exercise of power gives one immense gratification, but there is nothing essentially evil or vindictive about Mars’s characters or personalities.

\*\*\*

\*\*\*

\*\*

\*

## “Jupiter”

v5-15.11

### 1) Psychological:

(Akin to “Sagittarius”)

Positive:

Philosophical; Cheerful; Happy; Joy; Rejoice; Gay (Joyous); Optimistic; Hi-minded; Honorable; Professional; Religious; Nature Loving; Law-abiding; Aristocratic; Just; Aspiring; Opulent; Benevolent; Congenial.

Negative:

Overindulgent=mcm; Extravagant; Ostentatious; Braggart; Status Conscious; Status Seeker; Social Climber; False Loyalties; Incompletion. “Count Gramalkin™©1970 <http://www.solunar.info>”

\*

2) Physical: Wiry; Zealous; Fiery; Positive Acting. (Sagittarius = Arms; Hands Chest; Shoulders; Lungs Throat; Spine; Back; Thighs?).

3) Medical: Liver; Buckteeth; Sternum; Cell Salt? = Silica (S.); Tin.

4) Mundane:

Prosperity; Philosophy; Wealth; Money; Success; Win; Medicine; Healing; Nature; Spiritual Matters; Insurance Companies; Topaz; Purple; Turquoise; Religion; Religious Societies; Courts of Justice; Legal Matters; Government; Law; #3. Professionals - Doctors, Lawyers, Judges, Priests, Astrologers (Astrologers also have a lot of Mercury). Jupiter bestows quality and richness. This the greatest of the planets, ennoble the influences of every planet it configures preserving, healing and protecting. In every sense it represents the good. It represents the best of everything -- clothes, schools, social life -- in short, the “Good Life.” Those whose moneys are derived from land, real estate, wills, legacies, bequests, interest on money held in trust, have Jupiter configured with Saturn Nataly. Jupiter configured with Uranus amasses money through speculation. The world of show business, the entertainer fields will bring prosperity when Jupiter and Neptune are well configured in the natal chart, but the money is easily dissipated. Jupiter configured with Pluto denotes ill-gotten money.

\*

\*

\*

\*

\*\*\*

\*\*\*

\*\*

\*

“Saturn”

v5-15.11

\*

1) Psychological: (Akin to “Capricorn”)  
 Positive:  
 Practical, Dependable; Stable; Patient; Faithful; Realistic; Organized; Planning; Self-disciplined; Stern; Exacting; Hard-working; Just; Serious; Severe (= - or + ?); Cautious; Diplomatic; Economical; Persistent; determined; Long-suffering.

\*

Negative:  
 Stupid / Mistakes=mcm; Sad; Hate; Jealous; Fear; Doubt; Skeptic; Envy; Paranoid; Delay; Denial; Hassle; Restriction; Limitation; Selfish; Non-productive; Depression; Suspicious; Cruel; Bummer; Dictatorial; Slave-driving; Cheap; Miserly; Grim; Brooding; Melancholy; Stern; Tired; Exhausted; Inhibited.

\*

2) Physical: Bony structure of the body; Teeth; Skin; Under-nourishment; Thin. (Capricorn = Breast / Chest).  
 3) Medical: Rheumatism; Bruises; Arthritis; Bone Injuries; Cell Salt? = Calcareo Phosphorica (C.P.) Lead.  
 4) Mundane:

Black; Sapphire; Lead; Obsidian; Onyx; Delay; Denial; Hassle; Restriction, Limitation and Loss; Mines; Work-houses; Laborers; Slaves; Farmers; Real Estate; Mountains and Rocks; Earthquakes; Old Age; Old Man, Grandfather; Father Time and Time; #8; Desolate or barren places or land; This is the planet of conformity, complexities, inferiority, orthodoxy, economy, fear and hate. One with a lot of negative Saturn influence will make a lot of stupid mistakes. Configured with the Lights means all of the preceding but also prudence, a talent for organization and patience. It denotes longevity and the dead. “Count Gramalkin™ ©1970 <http://www.siderealzodiac.info>”

\*\*\*

\*\*

\*

“Uranus”

v5-15.11

\*

1) Psychological: (Akin to “Aquarius”)  
 Positive:  
 Intuition, Excite / Excitement=mcm; Originality; Invention; Ingenious; Quick Wit; Unconventionality; Altruism; Humanitarian; Science; Instinct; Enlightenment (?); Thrills; Ahead of the times; Exotic.

\*

Negative:  
 Eccentric; Erratic; Extremist; Unpredictable; Strange; Spasmodic; Obstinacy; Obsessive; Stimulant/Thrill Addict; Shock; Suicidal.

\*

2) Physical: Nervous System. (Aquarius = Hart; Nervous System; Veins).  
 3) Medical: Cell Salt? = Natrum Mariaticum (N.S.) Radium, Uranium.  
 4) Mundane:

Change; Revolutions; Political Upheavals; Suicide/Suicidal especially when confused (with Neptune); Scientific Research; Gadgets; Electronics; Electrical Inventions; Electricity; TV; Motor Vehicles; Motors (a gadget); Plaids, and Changeable Colors; Opal; Uranium; Late, Late, Late; Shock; In Shock; #4. Sudden fast exciting change; New Experiences; Doors you didn’t know were there open; Previously beyond grasp comes; The planet always found in the vanguard of advanced movements, revolution, the discarding of the old and outmoded. This is the planet of the inventor and scientist, and typifies the computer age. True Uranians are inspired geniuses of humanity, although in politics such people seem dictatorial simply because most of their fellow men are too slow to keep up with them.

\*

\*

\*

\*

\*

\*

\*\*

\*\*\*

\*\*\*

\*

“Neptune”

v5-15.11

1) Psychological: (Akin to “Pisces”)

Positive:

Imagination; Fantasy; Idealist; Theatrical; Pretension (+ / - ?); Dramatic; Sensitive; Absorption; Clever. Drawn to Mysticism, Musical, Poetic; Fascinated with Spirituality.

Negative:

Confusion / Escapism=mcm; Hysterical; Guilt; Worry; Anxious; Grief; Gullible; Naive; Unrealistic; Day-dreamers; Fraud; Schemers / Plotters (+ / - ?); Deceit; Delusion; Alcoholic Drug Addict; Supersensitive; Resignation; Quitter; Mistake the apparent for the real (the “Cardinal Sin of Mankind”). “Count Gramalkin™ ©1970

\*

2) Physical: Large protruding eyes (women); Bushy Eyebrows (men); Tend too be stout. (Pisces = Abdomen; Navel; Digestive Tract).

3) Medical: Cell Salt? = Ferrum Phosphoricum (F.P.), Zinc. <http://www.stamanpress.com>”

4) Mundane:

Idealism (= -or+?); Cinema; Fiction; Thespian; Actors; Movies; Plays; Dramas; Confidence Rackets; Schemes; Scams; Photography; Gases; Jade; All stimulants alcohol’s and other drugs; A sucker and a trickster (can sell you the Golden Gate Bridge yet will buy it from you); # 7. The planet Neptune causes confusion, so that the native becomes completely flurried. The most common manifestation of Neptune is confusion. The most common confusion is escapism. The situation or someone is causing my experience. E.g. “You make me mad.” Neptune is the cause of an indefinable sense of inadequacy that makes the native avoid responsibility and desire to escape into a secluded and leisurely world of congeniality, a world of one’s own choosing or making -- frequently through stimulants alcohol and other drugs, a fascination with Art, Music and Science are the forte of Neptune? Successful actors = a positive Jupiter Neptune configuration.

\*\*\*

\*

“Pluto”

v5-15.11

1) Psychological: (Akin to “Scorpio”)

Positive:

Transition; Change; Miracles; Sensitivity; Authority in speech.

Negative:

Crises / Chaos;=mcm; In a perpetual state of crisis & chaos; Bitch; Critical; Argumentative; Needle, Bicker, Bitch, Bitch, Bitch; Shy; Aloof; Lonely, A Loner; Militant; Disruption; Destruction; Easily Embarrassed; Embarrassment; Timidity; Withdrawal; Hyper-critical; Pugnacious; Sneering Attitude; Sardonic Smile; Quarrelsome; Likes to “Needle” people; Causes Upheaval; Starts arguments “just for the heck of it.” Takes things personally as an affront, twists things around to apply to self personally as an affront. Puts nose where it doesn’t belong. Tries to save the world when cannot save self. Criticizes but cannot take criticism. “Count Gramalkin™ ©1970 <http://www.gramalkin.com>”

\*

2) Physical: Short; Stocky; Muscular; Well Built; Lean Body; Heavy-set; “Plutonians” may appear fat but are not; Shaggy Beard. (Scorpio = Throat (snake like); Larynx; Thyroid; glands).

3) Medical: Fits; Seizures; Epilepsy; Convulsions; Paralysis; Poisons; Cell Salt? = Calcareo Sulphurica (C.S.), Cobalt, Plutonium.

4) Mundane:

Change; Miracles; The Four Horsemen of the Apocalypse - Death, Famine, War; Plague; Warrior; Fighter; Rebellion; Separation; Divorce; Hermit; Chaos; Accidents; The Underworld; Pestilence; Jasper; Plutonium; Occultism; #10; The Shaggy Generation; The end of a cycle (or relationship - usually unpleasantly); Poisons (e.g. gas if used as a poison); Kidnapping (may shanghai another or be shanghaiied ones self); The Atomic Bomb; During heavy “Pluto” transits one wants to blow off everything and move away; Accident and crises prone; Too boil it all down most common manifestation of Pluto is “Crisis.” Pluto is a solitary worker a poor mixer, the eternal lone wolf. Sooner or later one breaks from his home, putting behind him all it represents in respectability, tradition and orthodoxy, for the Pluto native is the eternal rebel. Shyness, diffidence, remoteness, austerity, and sardonic smile are characteristics of this planet. The secrete to dealing with Pluto is the ability to adjust to the changes moment to moment rather than letting them build up into crises and to refrain from bicker and argue.

\*\*\*

\*

\*

\*\*\*

"Sidereal Horoscopes"

By  
Count Gramalkin

"Fixed Stars and When They Count in Horoscope Delineation - Epoch Omega 1977 - The Big 44"

Stars of the 1<sup>st</sup> and 2<sup>nd</sup> magnitude the extra-Zodiacal of which that count in are mostly in the northern latitudes aspected to or conjunct (in Zodiacal Sidereal Celestial Longitude) any angle within a one degree orb equal a conjunction of the Intrinsic Value of the star and the angle. Stars aspecting a Natal, or Secondary-Progressed or an angular or an angular house cyclic chart planet within a zero degree orb (60') count via the Intrinsic Value of the star, planet and aspect. Herewith is a list of Fixed Stars that count listed by degree in order to make it easy and fast to check aspects to a file. The Robson Planetary Symbology rather than the Classical Names show the Intrinsic Value of the Stars. \* = Zodiacal Stars; mg = Magnitude; \ = Conjunction; v9-11.11

00 Pisces 59	35 N 07	Sheat (Good Fortune)	2 mg	Mars\Mercury
01 Cancer 04	16 S 07	Procyon (Lesser Dog)	1 mg	Mercury\Mars
01 Taurus 26	22 N 05	Algol (Ghoul)	2 mg	Saturn\Jupiter
02 Leo 32	22 S 23	Alphard (Solitary One)	2 mg	Saturn\Venus
03 Gemini 47	66 N 15	Polaris (Pole Star)	2 mg	Saturn\Venus
04 Scorpio 53	42 S 34	Bungula (Toliman)	1 mg	Venus\Jupiter
04 Gemini 01	16 S 04	Betelgeuse (Orion's Shoulder)	1 mg	Mars\Mercury
05 Leo 06*	00 N 28	Regulus (Little King)	1 mg	Mars\Jupiter
05 Gemini 10	21 N 30	Menkalinan (Auriga's Shoulder)	2 mg	Mars\Mercury
05 Aries 39	25 N 56	Mirach (Girdle)	2 mg	Venus
07 Capricorn 01	29 N 19	Altair (Vulture)	1 mg	Mars\Jupiter
07 Pisces 29	20 S 47	Difda	2 mg	Saturn
07 Scorpio 49*	01 S 48	Isidis or Jubba (Forehead)	2 mg	Mars\Saturn
09 Aquarius 06	21 S 07	Formalhaut (Mouth of the Fish)	1 mg	Venus\Mercury
10 Aquarius 36	59 N 54	Deneb (Tail)	1 mg	Venus\Mercury
12 Aries 55*	09 N 57	Hamal (Sheep, Head of Aries)	2 mg	Mars\Saturn
14 Gemini 22*	06 S 45	Alhena (Burned-in Brand)	2 mg	Mercury\Venus
15 Taurus 03*	05 S 28	Aldebaran (Forecaster or Follower)	1 mg	Mars
15 Scorpio 04*	04 S 34	Antares (Rival of Mars or Cor Scorpii)	1 mg	Mars\Jupiter
16 Leo 34*	14 N 20	Zosma	2 mg	Saturn\Venus
17 Libra 08	52 S 52	Acrux (In the Southern Cross)	1 mg	Jupiter
17 Libra 33	44 N 38	Alphecca (Northern Crown)	2 mg	Venus\Mercury
19 Gemini 21	39 S 35	Sirius (Dog Star, Sothis)	1 mg	Jupiter
19 Aries 29	27 N 48	Almach (Badger)	2 mg	Venus
19 Pisces 34	25 N 21	Alpheratz (Andromeda's Head)	2 mg	Jupiter\Venus
20 Gemini 15	76 S 51	Canopus	1 mg	Saturn\Jupiter
20 Aquarius 30	59 S 22	Achernar (End of the River)	1 mg	Jupiter
20 Sagittarius 33	61 N 45	Vega (Falling One)	1 mg	Venus\Mercury
22 Taurus 05	31 S 08	Rigel (Orion's Foot)	1 mg	Jupiter\Mars
23 Scorpio 14	07 N 13	Sabik (Preceding)	2 mg	Saturn\Venus
25 Gemini 30*	10 N 05	Castor	2 mg	Mercury
26 Taurus 11	16 S 48	Bellatrix	2 mg	Mars\Mercury
26 Leo 52*	12 N 17	Denebola (Lion's Tail)	2 mg	Saturn\Venus
27 Taurus 07	22 N 53	Capella (She-Goat)	1 mg	Mars\Mercury
27 Taurus 26	57 S 23	Phact	2 mg	Venus\Mercury
27 Taurus 37	23 S 39	Mintaka (In Orion's Belt)	2 mg	Saturn\Mercury
27 Scorpio 41	35 N 52	Ras Alhague (Snake-Charmer's Head)	2 mg	Saturn\Venus
27 Taurus 50*	05 N 22	El Nath (Bull's North Horn)	2 mg	Mars
28 Gemini 29*	06 N 40	Pollux	1 mg	Mars
28 Aquarius 45	19 N 25	Markab (Saddle)	2 mg	Mars\Mercury
29 Libra 02	44 S 07	Agena	1 mg	Venus\Jupiter
29 Virgo 06*	02 S 02	Spica (Ear of Corn)	1 mg	Venus\Mars
29 Virgo 30	30 N 49	Arcturus	1 mg	Mars\Jupiter

Fagan's chosen heir Mazurek said Robson's text is cosmic jive yet the planetary cross-reference is suprisingly accurate.

"Sidereal Horoscopes"

By  
Count Gramalkin

"Fixed Stars and When They Count in Horoscope Delineation - Omega Epoch 1977 - The Big 44"

Stars of the 1<sup>st</sup> and 2<sup>nd</sup> magnitude the extra-Zodiacal of which that count in are mostly in the northern latitudes aspected to or conjunct (in Zodiacal Sidereal Celestial Longitude) any angle within a one degree orb equal a conjunction of the Intrinsic Value of the star and the angle. Stars aspecting a Natal, or Secondary-Progressed or an angular or an angular house cyclic chart planet within a zero degree orb (60') count via the Intrinsic Value of the star, planet and aspect. Herewith is a list of Fixed Stars that count listed by degree in order to make it easy and fast to check aspects to a file. The Robson Planetary Symbology rather than the Classical Names show the Intrinsic Value of the Stars. \* = Zodiacal Stars; mg = Magnitude; \ = Conjunction; v9-11.11

00 Pisces 59	35 N 07	Sheat (Good Fortune)	2 mg	Mars\Mercury
01 Cancer 04	16 S 07	Procyon (Lesser Dog)	1 mg	Mercury\Mars
01 Taurus 26	22 N 05	Algol (Ghoul)	2 mg	Saturn\Jupiter
02 Leo 32	22 S 23	Alphard (Solitary One)	2 mg	Saturn\Venus
03 Gemini 47	66 N 15	Polaris (Pole Star)	2 mg	Saturn\Venus
04 Scorpio 53	42 S 34	Bungula (Toliman)	1 mg	Venus\Jupiter
04 Gemini 01	16 S 04	Betelgeuse (Orion's Shoulder)	1 mg	Mars\Mercury
05 Leo 06*	00 N 28	Regulus (Little King)	1 mg	Mars\Jupiter
05 Gemini 10	21 N 30	Menkalinan (Auriga's Shoulder)	2 mg	Mars\Mercury
05 Aries 39	25 N 56	Mirach (Girdle)	2 mg	Venus
07 Capricorn 01	29 N 19	Altair ( Vulture)	1 mg	Mars\Jupiter
07 Pisces 29	20 S 47	Difda	2 mg	Saturn
07 Scorpio 49*	01 S 48	Isidis or Jubba (Forehead)	2 mg	Mars\Saturn
09 Aquarius 06	21 S 07	Formalhaut (Mouth of the Fish)	1 mg	Venus\Mercury
10 Aquarius 36	59 N 54	Deneb (Tail)	1 mg	Venus\Mercury
12 Aries 55*	09 N 57	Hamal (Sheep, Head of Aries)	2 mg	Mars\Saturn
14 Gemini 22*	06 S 45	Alhena (Burned-in Brand)	2 mg	Mercury\Venus
15 Taurus 03*	05 S 28	Aldebaran (Forecaster or Follower)	1 mg	Mars
15 Scorpio 04*	04 S 34	Antares (Rival of Mars or Cor Scorpii)	1 mg	Mars\Jupiter
16 Leo 34*	14 N 20	Zosma	2 mg	Saturn\Venus
17 Libra 08	52 S 52	Acrux (In the Southern Cross)	1 mg	Jupiter
17 Libra 33	44 N 38	Alphecca (Northern Crown)	2 mg	Venus\Mercury
19 Gemini 21	39 S 35	Sirius (Dog Star, Sothis)	1 mg	Jupiter
19 Aries 29	27 N 48	Almach (Badger)	2 mg	Venus
19 Pisces 34	25 N 21	Alpheratz (Andromeda's Head)	2 mg	Jupiter\Venus
20 Gemini 15	76 S 51	Canopus	1 mg	Saturn\Jupiter
20 Aquarius 30	59 S 22	Achernar (End of the River)	1 mg	Jupiter
20 Sagittarius 33	61 N 45	Vega (Falling One)	1 mg	Venus\Mercury
22 Taurus 05	31 S 08	Rigel (Orion's Foot)	1 mg	Jupiter\Mars
23 Scorpio 14	07 N 13	Sabik (Preceding)	2 mg	Saturn\Venus
25 Gemini 30*	10 N 05	Castor	2 mg	Mercury
26 Taurus 11	16 S 48	Bellatrix	2 mg	Mars\Mercury
26 Leo 52*	12 N 17	Denebola (Lion's Tail)	2 mg	Saturn\Venus
27 Taurus 07	22 N 53	Capella (She-Goat)	1 mg	Mars\Mercury
27 Taurus 26	57 S 23	Phact	2 mg	Venus\Mercury
27 Taurus 37	23 S 39	Mintaka (In Orion's Belt)	2 mg	Saturn\Mercury
27 Scorpio 41	35 N 52	Ras Alhague (Snake-Charmer's Head)	2 mg	Saturn\Venus
27 Taurus 50*	05 N 22	El Nath (Bull's North Horn)	2 mg	Mars
28 Gemini 29*	06 N 40	Pollux	1 mg	Mars
28 Aquarius 45	19 N 25	Markab (Saddle)	2 mg	Mars\Mercury
29 Libra 02	44 S 07	Agena	1 mg	Venus\Jupiter
29 Virgo 06*	02 S 02	Spica (Ear of Corn)	1 mg	Venus\Mars
29 Virgo 30	30 N 49	Arcturus	1 mg	Mars\Jupiter

Fagan's chosen heir Mazurek said Robson's text is cosmic jive yet the planetary cross-reference is suprisingly accurate.

\*\*\*

# “Sidereal Horoscopes”

By

Count Gramalkin

Western Sidereal Astrology Zodiacal Fixed Zodiac Professional Astrologer

Spiritual Evolution Self Realization Truth Seeker Disciple - Truth Changes Not

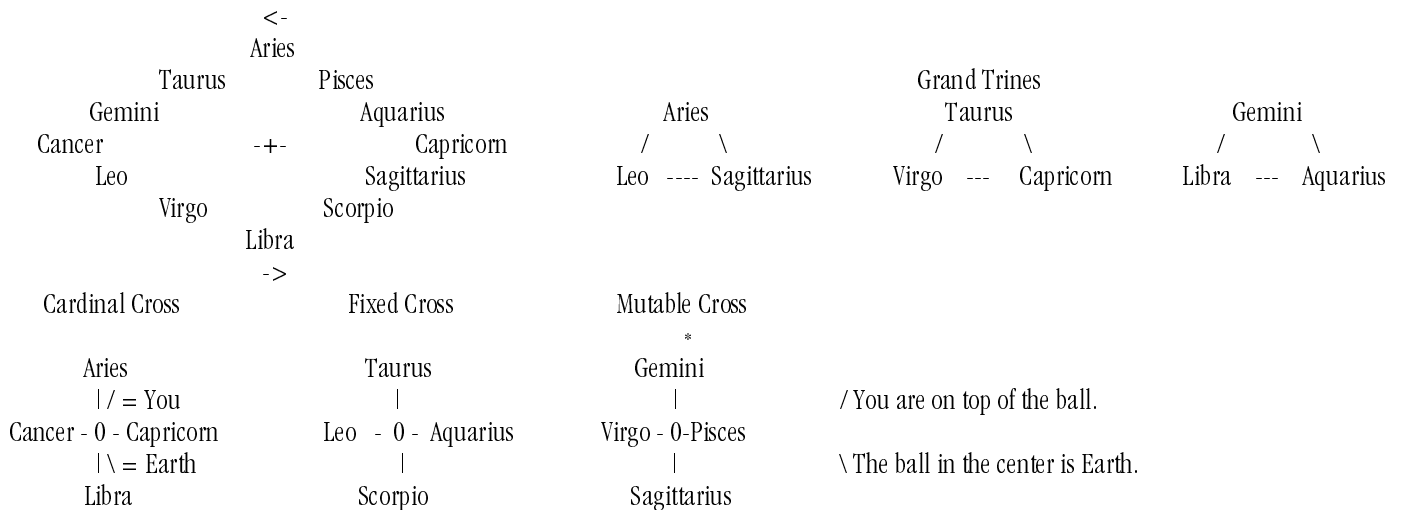
San Francisco School of Sidereal Astrology Intrinsic Values of the Planets Technique of Delineation

http://www.countgramalkin.com 1 877 322 7238 Toll Free Order Number +Fax CountGramalkin@CountGramalkin.Com

## “The Intrinsic Value of the Solar Crosses and Grand Trine Triplicities”

\*\*

Due to the fact that there are twelve “Constellations” or “Signs” within the circle of the “Zodiac” there are three natural “Solar Crosses” formed. “The Cross” emanates from within ones “Solar Plexus” and is symbolized astrologically by the Main Angles. The Ascendant (Rising Sign) \ Descendant and the Midheaven \ Nadir. The best case scenario is to have an even mix of all three crosses such as a Cardinal Sun with a Mutable Moon and a Fixed Ascendant with a Split Cross on the Angles (Leo Rising / Aries Midheaven). This tends to add balance to the case at hand. The leader that can do things themselves yet is adaptable, refrains from “I” have to be right all the time eTc. As now we know the elements fire earth air water in zodiacal Triplicities or trigon order is a fallacy to me the “Grand Trines” each of which include a sign from all three crosses simply show some balance in the application of the Intrinsic Values of the trine aspects involved Planet, Arabic Lunar Mansion, Fixed Star, Sign and Station. Example Venus @15 Aries trine Jupiter @15 Leo trine Uranus @15 Sagittarius = Venus Venus Mars (leader) trine Jupiter Saturn Sun (sergeant) trine Uranus Mars Jupiter (private).



\*\*

The “Cardinal Cross” is symbolized in the Tarot by the “Kings”

\*\*

The Cardinal Signs Symbolize the Leaders; Executives; Commissioned Officer; Top Ranked; Politically Motivated; “Cardinal Relationships” last a long time.

\*\*

The “Fixed Cross” is symbolized in the Tarot by the “Queens”

\*\*

The Fixed Signs Symbolize the Middle Management; Foreman; Non Commissioned Officers, Sergeants. They can actually do things themselves (fix the car eTc). They are in the center of activity. Make things hustle at the hub of activity. Management on the one hand Labor on the other. Phone and door bell always ringing. They are Industrious Determined; I.E. You can’t do that, yes I can. Sticktuitive. **“Gramalkin™ ©1970” v2-24.12**

\*

The “Fixed Constellation” Native tend to Brain-lock on their Bullheaded Fixations, Pushy, Meat headed, Obstinate, Stubborn, Inadaptable, Thick-headed Unreasonable. Even Physically they are “thick” people. The “Classic Case Fixed Constellation Native” is standing there banging its head on the rock. Why? “The idea came to me back in “37” and I have been here banging my head on this rock these many years hence.” Nothing anyone can say or do will help the “Fixed Native” realize there are better life conditions than banging ones head on the same old rock lifetime after lifetime after incarnation. Hey a guys got to at least change rocks now and again. Or get really radical and let the rocks bang on you for a change. In fact sometimes one can duck those boulders. Don’t move someplace under “Fixed” symbology, one can’t get out. “Fixed Constellation Relationships” can last a long time.

\*\*

The “Mutable Cross” is symbolized in the Tarot by the “Pages”

\*\*

The Mutable Signs symbolize the more common man; privates; laborers; workers. They are adaptable, don’t have to be “right” all the time. The Mutable Signs tend to be weak; unstable; unreliable; unbalanced easily shaken; vacillating; indecisive; mental sign, long on intellect short on will power (especially Gemini and Virgo); get shoved around; let someone else do the hard job, take the easy job. Mutable Constellation Relationships tend to be short lived.

\*\*\*

\*\*\*

"Sidereal Horoscopes"

By

Count Gramalkin

"Celestial Location Orienteering"

<http://www.countgramalkin.com> 1 877 322 7238 Toll Free Order Number +Fax CountGramalkin@CountGramalkin.Com

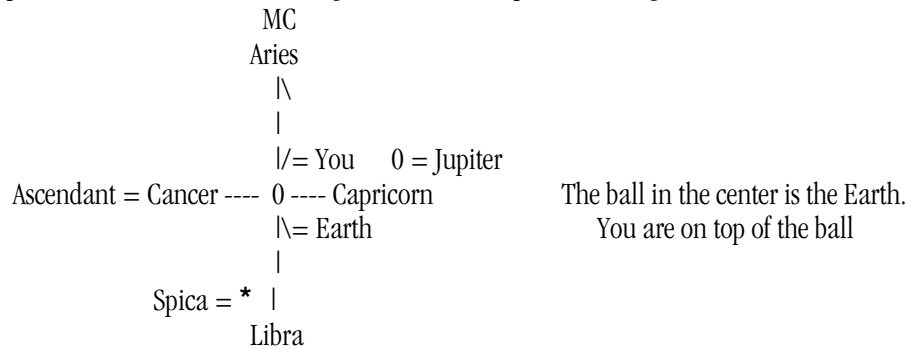
Delineating the location of the Zodiac or Ecliptic and thereby the stars and planets is quite simple given correct data (date, time and hemisphere). The ARC of the Suns PATH through the heavens in the day shows the latitude arc of the Zodiac therefore the latitude of the planets by night. The date tells what Constellation the Sun is in. The Sun is always in its Constellation and in the Zodiac. The apparent daily motion of the Sun about the earth is a twenty four-hour clock with zero hour equals midnight. Gaze toward the Equator at noon, Sun in say...Aries is overhead (12 noon station). Sunset Constellation Aries is setting in the west (6 PM station). Midnight Sun at Constellation Aries would be on the opposite side of the planet below one (at 0 hour or midnight station). Dawn Constellation Aries and the Sun is rising east (6 AM station). v2-24.12

\*

The "Main Angles" = Ascendant\Descendant & Midheaven\Nadir. Where the arc directly overhead crosses the Zodiac is the Midheaven. Where the arc ninety degrees east of the Midheaven crosses the Zodiac is the Ascendant. Knowing the order of the signs and that the Sun Transit of the SIGNS or CONSTELLATIONS go approximately from the 15th to the 15th April 15 beginning Aries lets one spot where the Sun its Constellation and Station is at a given time of day. Count the Signs from the Suns Station to the Sign of any given Sidereal Zodiac Longitude (from a Ephemeride, table, map) of what star, planet, comet one is seeking to point at locate the Zodiacal longitude of points of interest.

\*

The Sun transits a Constellation in about thirty days. A Sign transits a fixed terrestrial point, a "Midheaven Meridian" or tree in about two hours. Really the earth rotates thirty degrees every two hours, a degree every four minutes. For example: May 1st the Sun is in the middle of the constellation Aries. One is in the Northern Hemisphere so a heavenly gaze equator earth south at noon shows the Sun overhead yet still fairly low on the Horizon Note the Suns daily arc through the heavens which is the location of the Zodiac. Note the arc of the "Midheaven Meridian" (Medium Coeli) going directly overhead to where it intersects the Sun transiting the Zodiacal Constellation of Aries. Constellations Aries and Libra are in 180-degree opposition so Constellation Libra is below you on the other side of the planet at the 0-hour or 12 AM station. Cardinal Cross Angular, ninety degrees to ones left on the Ascendant in the 6 AM station Constellation Cancer is rising so planet Jupiter in opposition Constellation Capricorn would be setting ninety degrees to the right in the Descendent or 6 PM station. So where's the Spica, pal?...The famous fiducial navigation fixed star Spica at 29 Virgo would be about the 1:AM station on the opposite side of the planet.



Approximate dates Epoch 1950:

(Cardinal Cross)	(Fixed Cross)	(Mutable Cross)	Cardinal Cross	Fixed Cross	Mutable Cross
Aries = 4\15	-> Taurus = 5\15	-> Gemini = 6\15	Aries	Taurus	Gemini
Cancer = 7\16	-> Leo = 8\17	-> Virgo = 9\17	/= You		
Libra = 10\17	-> Scorpio = 11\16	-> Sagittarius = 12\16	Cancer - 0 - Capricorn	Leo - 0 - Aquarius	Virgo - 0 - Pisces
Capricorn = 1\15	-> Aquarius = 2\24	-> Pisces = 3\15	\ Libra	 Scorpio	 Sagittarius

Here is a test for you. Midnight December 25 Northern Hemisphere the Moon and Mercury are in Sagittarius. Mars in Cancer. Saturn in Leo. Jupiter in Aries. Venus in Aquarius. You are seeking Star Alderbaran at 15 Taurus. Which planets can be seen and where are they? Where is Alderbaran and what are the two huge Stars on the Mid-Heaven? At midnight the Mutable Cross is on the Angles the Sun, Moon, Mercury in Sagittarius is in the 0-hour station unseen on the opposite side of the planet. Venus unseen 8 PM station (20 O'clock). Saturn at 8 AM station and Mars in the 10 AM station are visible rising east to the left. Jupiter visible is setting west to the right in the 4 PM station. Alderbaran visible is setting to the right in the 2 PM station. As Gemini is in 180-degree opposition to Sagittarius it would therefore be overhead on the "Mid-Heaven" the two big stars would be Sirius at 19 and Pollux in 28 Gemini. Good luck love thank you amen Om, Count Gramalkin

\*\*\*\*\*

## Mazurek Arabic Lunar Mansions

\*

### Fixed Constellations

*Taurus (=Venus), Leo (=Sun), Scorpio (=Pluto), Aquarius (=Uranus).*

*Moon Mansion = 00d:00m (Moon from 0 degree to 12d:51m)*

*Saturn = 12d:51m*

*Jupiter = 25d:43m*

\*

### Mutable Constellation

*Gemini (=Mercury), Virgo (=Mercury), Sagittarius (=Jupiter), Pisces (=Neptune).*

*Mars = 8d:34m*

*Sun = 21d:26m*

\*

### Cardinal Constellations

*Cancer (=Moon), Libra (=Venus), Capricorn (=Saturn), Aries (=Mars).*

*Venus = 4d:17m*

*Mercury = 17d:08m*

\*

*The Approximate dates of the Lunar Mansions. Due to the "Leap Year" phenomena actual dates may vary and should be checked with an Ephemeris.*

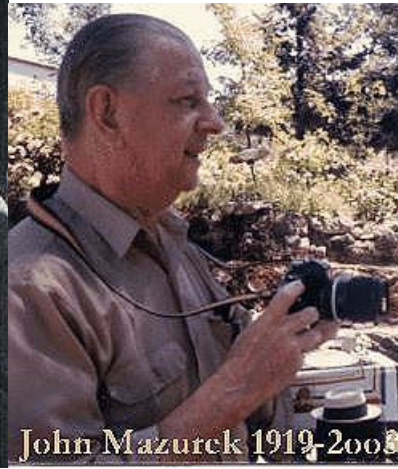
\*

<i>1/6 = Sun/Sagittarius</i>	<i>7/8 = Sun/Gemini</i>
<i>1/19 = Venus/Capricorn</i>	<i>7/22 = Venus/Cancer</i>
<i>1/31 = Mercury/Capricorn</i>	<i>8/4 = Mercury/Cancer</i>
<i>2/13 = Moon/Aquarius</i>	<i>8/17 = Moon/Leo</i>
<i>2/26 = Saturn/Aquarius</i>	<i>8/31 = Saturn/Leo</i>
<i>3/4 = Jupiter/Aquarius</i>	<i>9/13 = Jupiter/Leo</i>
<i>3/24 = Mars/Pisces</i>	<i>9/26 = Mars/Virgo</i>
<i>4/6 = Sun/Pisces</i>	<i>10/10 = Sun/Virgo</i>
<i>4/19 = Venus/Aries</i>	<i>10/23 = Venus/Libra</i>
<i>5/2 = Mercury/Aries</i>	<i>11/4 = Mercury/Libra</i>
<i>5/15 = Moon/Taurus</i>	<i>11/17 = Moon/Scorpio</i>
<i>5/27 = Saturn/Taurus</i>	<i>11/29 = Saturn/Scorpio</i>
<i>6/11 = Jupiter/Taurus</i>	<i>12/12 = Jupiter/Scorpio</i>
<i>6/24 = Mars/Gemini</i>	<i>12/25 = Mars/Sagittarius</i>

\*\*\*\*\*

\*\*\*\*\*

Cyril Fagan (1896-1970)



John Mazurek 1919-2003

By Fagan out of Mazurek

Western Sidereal Astrology Horoscope Example - Marilyn Monroe Natal Chart



\*\*\*

The San Francisco School of Sidereal Astrology  
Intrinsic Values of the Planets Technique of Delineation

**The Count Gramalkin.com Free eBooks Library**

By

**Count Gramalkin**

\*\*\*\*\*

\*\*\*

## "Sidereal Horoscopes"

By

Count Gramalkin

\*\*

Western Sidereal Astrology Zodiacal Fixed Zodiac Astrologer

Spiritual Evolution Self Realization Truth Seeker Disciple - Truth Changes Not

San Francisco School of Sidereal Astrology Intrinsic Values of the Planets Technique of Delineation  
www.countgramalkin.com -1 877 322 7238 Toll Free +fax - CountGramalkin@CountGramalkin.Com

\*4-15.12\*

## "The Count Gramalkin.com Free eBooks Library"

The Mystery of Life - How to Better Read and Predict It - What to Do About It

The Old Man always said that if you can't put it in a pamphlet you don't understand the situation.

\*\*

*Announcing the <http://www.countgramalkin.com> Free eBooks Library spiritual evolution astrology horoscopes and tarot techniques give-away with the Cyril Fagan - John Mazurek - Count Gramalkin San Francisco School of Sidereal Astrology Technique of Delineation. Learn foretelling the future tell one own fortune new edition eBooks now given away with zero spyware spam virus. Open the site then click on the Book Information and Stars Equals Cards tabs. The essence synthesis resolution of the cumulative world history of astrological research by millions of people from many civilizations over the last 10,000 years with the truth and falsehood sorted out of it in an absolute proof cash on the line ground of being.*

\*\*

### The Count Gramalkin Fortune Teller Manual

The Fortune Teller Manual Teaches you how to do a professional quality reading and pretty much covers the subject from "always ask for grace before doing anything transcendental" to "compassionate yet detached". Current Edition = 49 pages = 15 pages Graphics and Charts - 34 pages of Text available at this URL [http://www.starmanpress.com/printable\\_versions/tell\\_your\\_own\\_fortune\\_by\\_count\\_gramalkin.pdf](http://www.starmanpress.com/printable_versions/tell_your_own_fortune_by_count_gramalkin.pdf)

\*\*

### The Count Gramalkin Tarot Manual

The Tarot Manual concentrates specifically on learning how to do a Tarot Card Reading. The "Tarot Manual" will get anyone started and make an astrologer or Tarot Reader or anyone else who understands the intrinsic values of the planets a fabulous Tarot Reader overnight. Current Edition = 25 Pages - 6 Pages of Graphics and Charts - 19 Pages of Text available at this URL

[http://www.loveadvice.biz/printable\\_versions/introduction\\_to\\_tarot\\_by\\_count\\_gramalkin.pdf](http://www.loveadvice.biz/printable_versions/introduction_to_tarot_by_count_gramalkin.pdf)

\*\*

### Astrology Manifesto by Count Gramalkin

My masterpiece so to speak is written for astrologers. The layman would need quite a bit of definitions to understand it. Astrology Manifesto is the combined current editions of the manifesto article and the San Francisco School of Sidereal Astrology Technique - Current Edition = 47 pages - 31 pages of text with 16 pages of charts and illustrations that nicely resolves the world history of astrological research with the truth and fallacy proven out of it in an empirical research absolute proof ground of being (money) that ought to scare you a little is available at this URL. [http://www.gramalkin.com/printable\\_versions/astrology\\_manifesto\\_by\\_count\\_gramalkin\\_sidereal\\_astrologer.pdf](http://www.gramalkin.com/printable_versions/astrology_manifesto_by_count_gramalkin_sidereal_astrologer.pdf)

\*\*

### The San Francisco School of Sidereal Astrology Intrinsic Values of the Planets Technique of Delineation

by

Count Gramalkin

The entirety of the essence of the Cyril Fagan of Dublin, Ireland his chosen heir the Reverend Professor John Mazurek director of the San Francisco School of Sidereal Astrology Count Gramalkin legacy lineage. The contents include The San Francisco School of Sidereal Astrology Intrinsic Values of The Planets Technique of Delineation as applied to horoscopes and cast lots such as tarot with a bit of explanation elucidation that teaches a lot about the mystery of life, how to read and predict it and what to do about it. The Current Edition = 66 Pages - 15 pages of Graphics and Charts - 51 Pages of Text. Written for all layman or professional. Available at this URL.

[http://www.westernsiderealastrology.info/printable\\_versions/sidereal\\_astrology.pdf](http://www.westernsiderealastrology.info/printable_versions/sidereal_astrology.pdf)

\*\*

\*\*\*

## The San Francisco School of Sidereal Astrology Technique

by

Count Gramalkin

This quick reference version is the heart and soul, the nuts and bolts, just The San Francisco School of Sidereal Astrology Technique of Delineation by its self without explanation. Current Edition = 42 pages, 15 pages of charts and illustrations with 27 pages of text written for astrologers. Available at this URL [http://www.siderealastrology.net/printable\\_versions/sf\\_school\\_sidereal\\_astrology\\_technique\\_by\\_count\\_gramalkin.pdf](http://www.siderealastrology.net/printable_versions/sf_school_sidereal_astrology_technique_by_count_gramalkin.pdf)

\*\*

## Marilyn Monroe Western Sidereal Fixed Zodiac Natal Birth Horoscope

In The San Francisco School of Sidereal Astrology Technique

By

Count Gramalkin

Done Geographically - With the Campanus Table of Houses - Octoscope Watch and East Point Angles - SolFire Ephemeride - Arabic Lunar Mansions - Major Fixed Star Aspects - Constellation Brakes - Speculative - Current Edition = 44 Pages - 21 Pages of Graphics and Charts - 23 Pages of Text [http://www.loveadvice.biz/printable\\_versions/marilyn\\_monroe\\_sidereal\\_horoscope\\_by\\_count\\_gramalkin.pdf](http://www.loveadvice.biz/printable_versions/marilyn_monroe_sidereal_horoscope_by_count_gramalkin.pdf)

\*\*

## The Count Gramalkin "Sidereal Zodiac Horoscopes Chronicles" Current Edition

by

Count Gramalkin

This piece is a collection of articles containing information that is mostly included in some form or other elsewhere on [www.countgramalkin.com](http://www.countgramalkin.com) all together in one place. It is mostly just me prattling on elucidating explanation about the mystery of life how to read and predict it and what to do about it. The Current Edition = 114 pages - 21 pages Graphics - 88 pages of text Available at this URL [http://www.solunars.info/printable\\_versions/the\\_count\\_gramalkin\\_sidereal\\_horoscope\\_chronicles.pdf](http://www.solunars.info/printable_versions/the_count_gramalkin_sidereal_horoscope_chronicles.pdf)

\*\*

## India Astrology

by

Count Gramalkin

There is often a bit of query about the India astrology so here is The San Francisco School of Sidereal Astrology report. Current Edition = 37 Pages - 15 Pages of Graphics and Charts - 22 Pages of Text [http://www.siderealzodiac.info/printable\\_versions/india\\_astrology\\_by\\_count\\_gramalkin.pdf](http://www.siderealzodiac.info/printable_versions/india_astrology_by_count_gramalkin.pdf)

\*\*

## The Arabic Lunar Mansions

by

Reverend Professor John Mazurek

The San Francisco School of Sidereal Astrology Director Cyril Fagan's Chosen Heir The Reverend Professor John Mazurek's Arabic Lunar Mansions Report. Current Edition = 51 Pages - 22 Pages of Graphics and Charts - 29 Pages of Text available at this is URL [http://www.siderealzodiac.info/printable\\_versions/mazureks\\_arabic\\_lunar\\_mansions.pdf](http://www.siderealzodiac.info/printable_versions/mazureks_arabic_lunar_mansions.pdf)

\*\*

## The Jesus Nativity Horoscope

by

Reverend Professor John Mazurek

The "Jesus of Nazareth Nativity" by the Reverend Professor John Mazurek is presented as an excellent example of the San Francisco School of Sidereal Astrology Technique of Delineation. Current Edition = 70 Pages - 21 Pages of Graphics and Charts - 49 Pages of Text is available at this URL [http://www.eclipses.biz/printable\\_versions/jesus\\_nativity\\_by\\_reverend\\_john\\_mazurek.pdf](http://www.eclipses.biz/printable_versions/jesus_nativity_by_reverend_john_mazurek.pdf)

\*\*

## The Schmersanski Technique of Homeopathic Tissue Cell Salt Application

by

Count Gramalkin.com

The Schmersanski Technique of Homeopathic Tissue Cell Salt Application Of Dr W.H. Schuessler's Inorganic Biochemic Theory In The San Francisco School of Sidereal Astrology Technique of Delineation Current Edition = 37 Pages - 15 Pages of Graphics and Charts - 22 Pages of Text available at this URL [http://www.solunar.info/printable\\_versions/schmersanski\\_cell\\_salt\\_technique\\_by\\_count\\_gramalkin.pdf](http://www.solunar.info/printable_versions/schmersanski_cell_salt_technique_by_count_gramalkin.pdf)

\*\*\*

## Fixed Stars and When They Count in Horoscope Delineation

by

Count Gramalkin.com

A one page chart of the 44 major fixed stars and their delineation arranged in degree order for fast reference when checking fixed star aspects to a horoscope file available at this URL [http://www.countgramalkin.com/printable\\_versions/fixed\\_stars\\_by\\_count\\_gramalkin.pdf](http://www.countgramalkin.com/printable_versions/fixed_stars_by_count_gramalkin.pdf)

\*\*

## The Intrinsic Values of the Planets

by

Count Gramalkin

San Francisco School of Sidereal Astrology Technique Explains The Meaning or Intrinsic Values of our Cosmic Sphere Planets in Horoscope and cast lots such as Tarot Card Delineation. Current Edition = 27 Pages = 11 Pages Graphics and Charts - 16 Pages of Text

[http://www.solunars.info/printable\\_versions/intrinsic\\_values\\_of\\_the\\_planets\\_by\\_count\\_gramalkin.pdf](http://www.solunars.info/printable_versions/intrinsic_values_of_the_planets_by_count_gramalkin.pdf)

\*\*

## Stars = Cards Delineation Cross-Reference and Tarot Layouts

by

Count Gramalkin

The Cross Reference Between the Planets and the Tarot Cards also Many Other Things and Seven Great Tarot Card Layout Charts Adequate to Deal With Most Any Situation available at this URL. [http://www.solunar.info/printable\\_versions/count\\_gramalkin\\_layouts\\_stars\\_cards\\_chart.pdf](http://www.solunar.info/printable_versions/count_gramalkin_layouts_stars_cards_chart.pdf)

\*\*

## The Art of Horoscope Production

by

Count Gramalkin

In the physical production of the horoscope, the actual piece of paper with the astrological map of our cosmic sphere drawn on it there are two main varieties of horoscope charts in the complete file format baseline, base charts and composite charts which are color coded to expedite quick recognition. Current Edition = 37 Pages - 15 pages of Graphics and Charts - 22 Pages of Text available at this URL.

[http://www.westernsiderealastrologyzodiacyrilfaganhoroscopecartotreading.us/printable\\_versions/horoscope\\_production\\_by\\_count\\_gramalkin.pdf](http://www.westernsiderealastrologyzodiacyrilfaganhoroscopecartotreading.us/printable_versions/horoscope_production_by_count_gramalkin.pdf)

\*\*

## The Art of Horoscope Synthesis

by

Count Gramalkin

The Art of Horoscope Synthesis is one of the major keys to being able to actually read and comprehend the essence of the meaning or delineation of the horoscope chart. It is the manner or technique with which one approaches the horoscope. The combining of parts or elements as to form a whole. The Art of Synthesis is how we apply the Art of Delineation. The Intrinsic Values of the Planets and Angles are the elements of the Art of Delineation. The Art of Delineation is how we interpret the Technique of Delineation. Current Edition = 40 Pages - 14 pages of Graphics and Charts - 25 Pages of Text. [http://www.westernsiderealastrology.us/printable\\_versions/art\\_of\\_horoscope\\_synthesis\\_by\\_count\\_gramalkin.pdf](http://www.westernsiderealastrology.us/printable_versions/art_of_horoscope_synthesis_by_count_gramalkin.pdf)

\*\*

## Horoscope Wheel - San Francisco School of Sidereal Astrology

A one page printable version of the blank horoscope wheel recommended by the San Francisco School of Sidereal Astrology as the most efficient wheel to use drawing hand drawn horoscopes. Horoscopes must be hand drawn as at the time of this publication zero computer programs are available that will correctly produce a horoscope much less the complete full file horoscopes baseline. [http://www.loveromanacemoneyhealthadvicetarotastrologyreadingfortunetold.us/printable\\_versions/horoscope\\_wheel.pdf](http://www.loveromanacemoneyhealthadvicetarotastrologyreadingfortunetold.us/printable_versions/horoscope_wheel.pdf)

\*\*\*

## All Of THE ABOVE

This Library Loads Current Edition - Quick Check Source Page For Newest Editions

Create a Count\_Gramalkin Folder On Your Desktop And Save As The Newest Edition

[http://www.countgramalkin.com/book\\_information.html](http://www.countgramalkin.com/book_information.html) - [http://www.countgramalkin.com/gramalkin\\_layout\\_chart.html](http://www.countgramalkin.com/gramalkin_layout_chart.html)

Also Free Horoscope and Midpoint Calculator Programs

<http://www.halloran.com> Customize Use Fagan Zodiacal Sidereal Zodiac Csmpanus Houses Birthplace - <http://www.noendpress.com/pvachier/midpoints/index.php>

\*\*\* \*\* \*

\*\*

## "Sidereal Horoscopes"

By

Count Gramalkin

\*\*

Western Sidereal Astrology Zodiacal Fixed Zodiac Astrologer - Tarot Reading

Spiritual Evolution Self Realization Truth Seeker Disciple - The Truth Changes Not

San Francisco School of Sidereal Astrology Intrinsic Values of the Planets Technique of Delineation

<http://www.countgramalkin.com> 1 877 322 7238 Toll Free+Fax CountGramalkin@CountGramalkin.Com

Attention Pattern Manipulates Mystic Law Creating Experience Attentions on God or Not Reprogram Attention to Perpetual Meditation

Each Edition Has New Material Added To It. The Highest Number / Date Edition Is The Newest Edition.

The Allopathic Psychiatrist Asks the Patient How They Feel About It The Great Reader Tells Them

The Path of the Planets Around the Sun Is The Zodiac and Path Don't Move

The Cardinal Sin of Mankind is Mistaking the Apparent For The Real

\*\*

### "The Mystery Revealed"

\*\*

\*\*\* \*\* \*

"Order "The Mystery Revealed" eBook Current Edition by Count Gramalkin Copyright and TradeMark™ ©

The Reverend Professor John Mazurek said; "Oh Gramalkin, I read your book. In fact I read it twice. Very good Gramalkin, very good".

"Anyone, you too may make a fortune or save one doing your own Readings with the Intrinsic Value Technique in The Mystery Revealed."

\*

"A timeless manuscript that will remain valid."

To order The Reverend Count Gramalkin eBook "The Mystery Revealed" Premium Edition which explains the mystery of life, how to better read and predict it and what to do about it PayPal a \$29 minimum donation to [eBook@Gramalkin.Com](mailto:eBook@Gramalkin.Com) = eBook at Gramalkin.Com. The Mystery Revealed eBook will be emailed to your PayPal email address. Copy and paste or state eBook Title in order form when possible. Log in to your PayPal Account. [www.paypal.com](http://www.paypal.com) - Title = "The Mystery Revealed"

\*

The Count Gramalkin eBook "The Mystery Revealed" that gives a realistic explanation of the "The Mystery of Life How to Read and Predict it and What To Do About It", also How To Do Your Own Astrology and Tarot Card Readings (all cast lots), is being released beginning with the as is early rough draft Current Edition of the finished product and it is still way worth the minimum donation. The information pages articles on [www.countgramalkin.com](http://www.countgramalkin.com) are excerpts from the Mystery Revealed and are included in the book as well as the current edition of the original text. Including the Introduction to Tarot, the Table of Contents and for all you Astrologer buffs there is also the San Francisco School of Sidereal Astrology Technique of Delineation; the Count Gramalkin "Sidereal Horoscopes Chronicles" and Gramalkin's address on "Learn to Tell Your Own Fortune". This address explains God, the meaning of life, the secret of the cosmos how to read / predict it and what to do about it, astrology, a bit on health care, the San Francisco School of Sidereal Astrology Intrinsic Value of the Planets Delineation Technique applied to Horoscopes and Cast Lots such as Tarot.

The Count Gramalkin Changes in Green Club

Also available is the Count Gramalkin "Changes in Green Club", a minimum sweet sixteen dollar a month donation eMail information service subscription membership club related to - The Mystery of Life How To Better Read and Predict It and What To Do About It - for the extremely motivated Spiritual Evolution Self Realization Truth Seeker Astrology, Tarot Cast Lots Reader Mavens. A lot of professional readers use this service. People who are trying to improve the quality of their readings and enhance the life condition of their clients and themselves who need the newest edition. Sort of an ongoing class scenario of whatever class notes come up and all changes or additions that are made in the material. Count Gramalkin policy to keep track of changes and additions to the material is all changes and additions are coded in green type on the work sheet. Having a copy of the worksheet as well as the finished product lets one quickly locate changes in the text. An attempt is made to incorporate response to a certain amount of relevant query into the published material. Query related to the mystery of life how to better read and predict it and what to do about it. Response related to astrology, tarot, spiritual evolution, health, doing ones own readings technique rather than giving you a reading. Give a man a reading they have a moment teach a man to read they have a lifetime. Minimum donations of sixteen dollars a month via PayPal emailed to [Changes\\_In\\_Green\\_Club@CountGramalkin.Com](mailto:Changes_In_Green_Club@CountGramalkin.Com) received by the first of the month receive the month's information eMailed to your PayPal EMail address. The amount of information forthcoming ebbs and flows. Zodiacal Western Sidereal Astrology Horoscopes Tarot Reading and Western Sidereal Zodiac Astrologer

Good luck love thank you amen Om to us one and all, Count Gramalkin

1-877-322-7238 Toll Free - [CountGramalkin@CountGramalkin.Com](mailto:CountGramalkin@CountGramalkin.Com) - *Count Gramalkin*™ © [StarManPress.Com](http://StarManPress.Com) 1970 ###-30-\*\*\*

\*\*\*\*\*

\*\*\*

# "Sidereal Horoscopes"

By

Count Gramalkin

\*

Western Sidereal Astrology Zodiacal Fixed Zodiac Astrologer - Tarot Reading

Spiritual Evolution Self Realization Truth Seeker Disciple - The Truth Changes Not

San Francisco School of Sidereal Astrology Intrinsic Values of the Planets Technique of Delineation

http:www.countgramalkin.com - 1.877.322.7238 Toll Free+Fax - CountGramalkin@CountGramalkin.Com

\*

## "Planets = Signs Glyphs And Constellation Dates"

\*v3-6.12\*

<i>Aries</i>	=	♈	=	♂	=	<i>Mars</i>
<i>Taurus</i>	=	♉	=	♀	=	<i>Venus</i>
<i>Gemini</i>	=	♊	=	☿	=	<i>Mercury</i>
<i>Cancer</i>	=	♋	=	☾	=	<i>Moon</i>
<i>Leo</i>	=	♌	=	☼	=	<i>Sun</i>
<i>Virgo</i>	=	♍	=	☿	=	<i>Mercury</i>
<i>Libra</i>	=	♎	=	♀	=	<i>Venus</i>
<i>Scorpio</i>	=	♏	=	♇	=	<i>Pluto</i>
<i>Sagittarius</i>	=	♐	=	♃	=	<i>Jupiter</i>
<i>Capricorn</i>	=	♑	=	♄	=	<i>Saturn</i>
<i>Aquarius</i>	=	♒	=	♅	=	<i>Uranus</i>
<i>Pisces</i>	=	♓	=	♆	=	<i>Neptune</i>

\*\*

GMT 0° Fagan Spica 29° 16':5" Zodiacal Sidereal Constellations Signs Dates Epoch 2000

\*\*

<i>Aries</i>	=	<i>April 14th</i>	<i>Libra</i>	=	<i>Oct 17th</i>
<i>Taurus</i>	=	<i>May 15th</i>	<i>Scorpio</i>	=	<i>Nov 16th</i>
<i>Gemini</i>	=	<i>June 15th</i>	<i>Sagittarius</i>	=	<i>Dec 16th</i>
<i>Cancer</i>	=	<i>July 18th</i>	<i>Capricorn</i>	=	<i>Jan 16th</i>
<i>Leo</i>	=	<i>Aug 17th</i>	<i>Aquarius</i>	=	<i>Feb 14th</i>
<i>Virgo</i>	=	<i>Sept 17th</i>	<i>Pisces</i>	=	<i>March 15th</i>

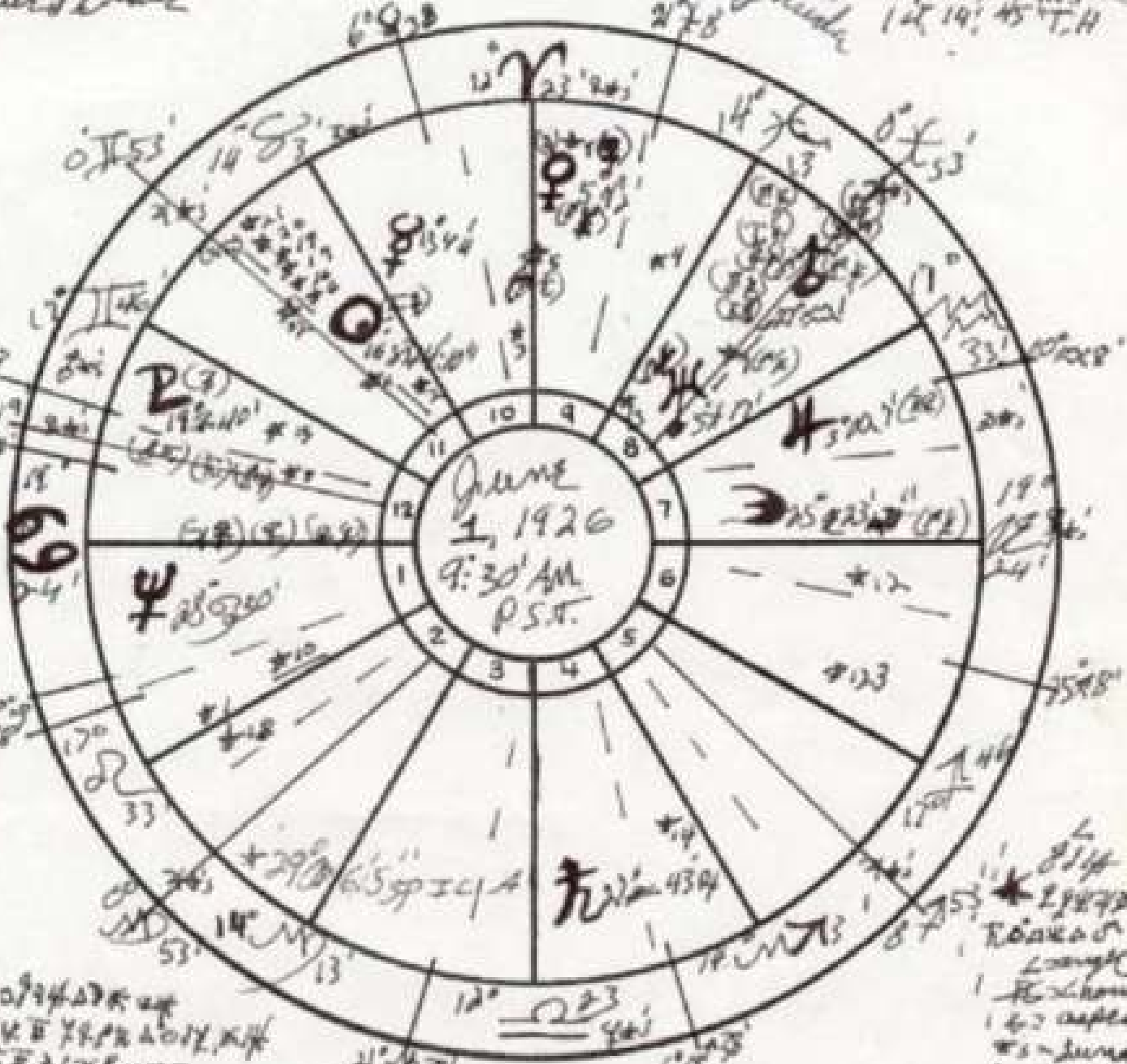
\*\*\*

# Western Sidereal Astrology Horoscope Example - Marilyn Monroe Natal Chart

Norma Jeane Mortenson  
 Norma Jeane Baker  
 Marilyn Monroe  
 Hollywood, California  
 White House

Sidereal Tables  
 Geographer, Cambridge  
 Octavo, 1870  
 Speculator

Net. Inc. = 22.7°  
 Math. = 27.91937  
 17° 30' 40" U.T.M.  
 24' 00" 7:51  
 118' 00" 4:36:51 U.T.  
 SUP. 12.34" 2: 09.45 R.A.M.C.  
 14° 16' 45" R.A.M.C.  
 14° 19' 45" T.H.



0/1/2/3/4/5/6/7/8/9/10/11/12/13/14/15/16/17/18/19/20/21/22/23/24/25/26/27/28/29/30/31/32/33/34/35/36/37/38/39/40/41/42/43/44/45/46/47/48/49/50/51/52/53/54/55/56/57/58/59/60/61/62/63/64/65/66/67/68/69/70/71/72/73/74/75/76/77/78/79/80/81/82/83/84/85/86/87/88/89/90/91/92/93/94/95/96/97/98/99/100

10 = 5120' ...  
 11 = 6234' ...  
 12 = 7345' ...  
 13 = 8456' ...  
 14 = 9567' ...  
 15 = 10678' ...  
 16 = 11789' ...  
 17 = 12890' ...  
 18 = 13901' ...  
 19 = 14012' ...  
 20 = 15123' ...  
 21 = 16234' ...  
 22 = 17345' ...  
 23 = 18456' ...  
 24 = 19567' ...  
 25 = 20678' ...  
 26 = 21789' ...  
 27 = 22890' ...  
 28 = 23901' ...  
 29 = 24012' ...  
 30 = 25123' ...  
 31 = 26234' ...  
 32 = 27345' ...  
 33 = 28456' ...  
 34 = 29567' ...  
 35 = 30678' ...  
 36 = 31789' ...  
 37 = 32890' ...  
 38 = 33901' ...  
 39 = 34012' ...  
 40 = 35123' ...  
 41 = 36234' ...  
 42 = 37345' ...  
 43 = 38456' ...  
 44 = 39567' ...  
 45 = 40678' ...  
 46 = 41789' ...  
 47 = 42890' ...  
 48 = 43901' ...  
 49 = 44012' ...  
 50 = 45123' ...  
 51 = 46234' ...  
 52 = 47345' ...  
 53 = 48456' ...  
 54 = 49567' ...  
 55 = 50678' ...  
 56 = 51789' ...  
 57 = 52890' ...  
 58 = 53901' ...  
 59 = 54012' ...  
 60 = 55123' ...  
 61 = 56234' ...  
 62 = 57345' ...  
 63 = 58456' ...  
 64 = 59567' ...  
 65 = 60678' ...  
 66 = 61789' ...  
 67 = 62890' ...  
 68 = 63901' ...  
 69 = 64012' ...  
 70 = 65123' ...  
 71 = 66234' ...  
 72 = 67345' ...  
 73 = 68456' ...  
 74 = 69567' ...  
 75 = 70678' ...  
 76 = 71789' ...  
 77 = 72890' ...  
 78 = 73901' ...  
 79 = 74012' ...  
 80 = 75123' ...  
 81 = 76234' ...  
 82 = 77345' ...  
 83 = 78456' ...  
 84 = 79567' ...  
 85 = 80678' ...  
 86 = 81789' ...  
 87 = 82890' ...  
 88 = 83901' ...  
 89 = 84012' ...  
 90 = 85123' ...  
 91 = 86234' ...  
 92 = 87345' ...  
 93 = 88456' ...  
 94 = 89567' ...  
 95 = 90678' ...  
 96 = 91789' ...  
 97 = 92890' ...  
 98 = 93901' ...  
 99 = 94012' ...  
 100 = 95123' ...

\*\*\*\*\*

\*\*\*

# "Sidereal Horoscopes"

By

Count Gramalkin

\*\*

Western Sidereal Astrology Zodiacal Fixed Zodiac Astrologer - Tarot Reading

Spiritual Evolution Self Realization Truth Seeker Disciple - The Truth Changes Not

San Francisco School of Sidereal Astrology Intrinsic Values of the Planets Technique of Delineation

<http://www.countgramalkin.com> 1.877.322.7238 Toll Free+Fax CountGramalkin@CountGramalkin.Com

\*\*

## "Marilyn Monroe Typical Bare Bones Skeleton Generic Horoscope Chart"

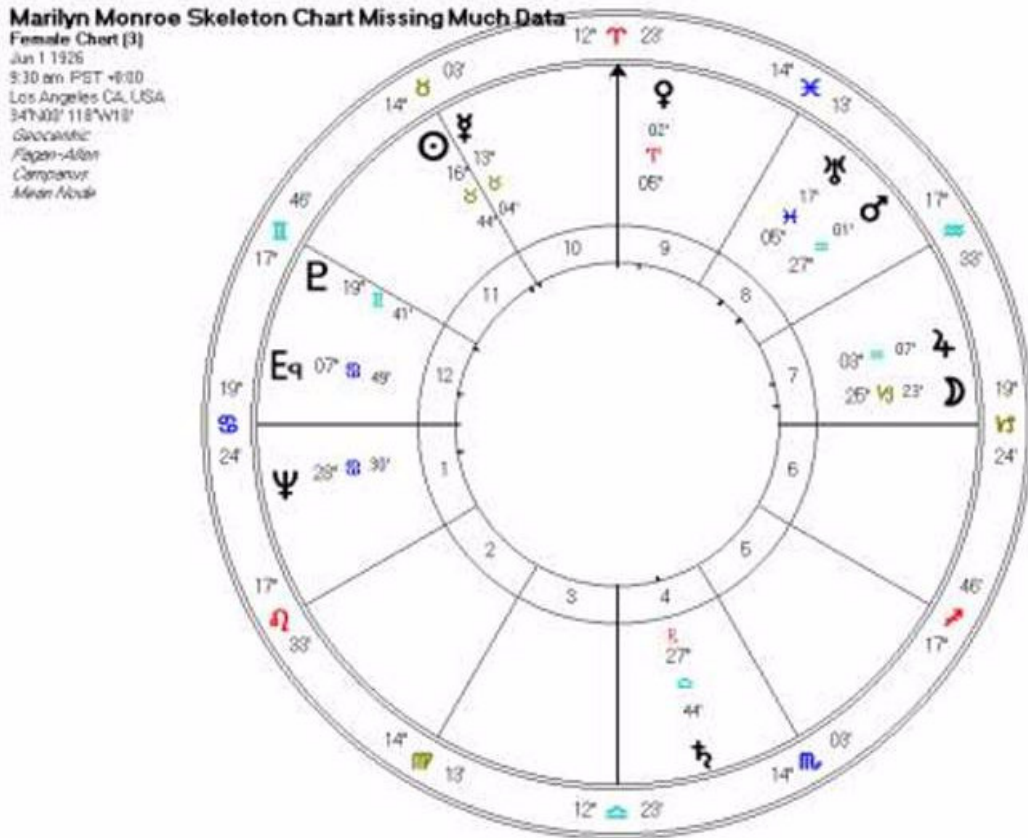
\*\*

One may observe from the Count Gramalkin Marilyn Monroe example horoscope displayed above that the real deal is a radically advanced level of accuracy, quality and completion vastly superior to the also displayed not a real horoscope typical bare bones skeleton generic chart missing most of the relevant data rendition horoscopes and readings commonly available elsewhere. One of those seeking to attain the best you DO GET what you paid for deals. The Reverend Count Gramalkin is a direct heir of the modern day father of astrology Cyril Fagan of Dublin, Ireland (1896-1970) and is senior out of Fagan's chosen heir The Reverend Professor John Mazurek (1919-2003) Director of The San Francisco School of Sidereal Astrology.

Angels can fly because they take themselves lightly

Good luck love thank you amen Om,

The Reverend Count Gramalkin

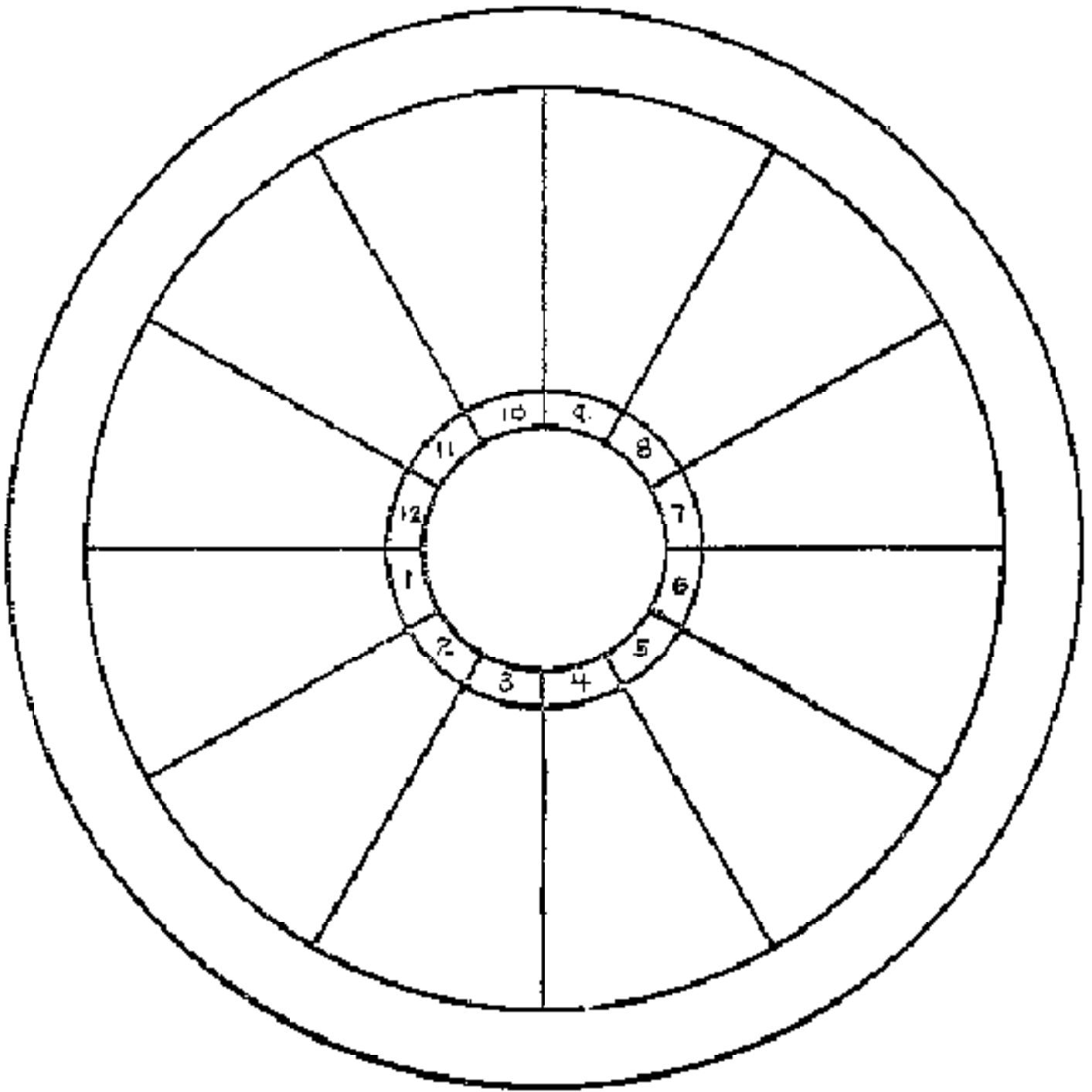


\_\_\_\_\_

\_\_\_\_\_

\_\_\_\_\_

\_\_\_\_\_



“Count Gramalkin Layout Chart”

Most of the Layouts are of ancient lineage. Always start with a Complete Deck all facing the same direction. Be calm focus on query. Ask Grace of the Angels of Light. Shuffle 7X. Left Hand Cut 3 Piles. Restack “As You Will” To 1 Pile, Deal. Layout and read cards in numerical order.

-----\*

The “Octoscope” General Reading Layout

	MC			1 & 9 = Self
	#10			2 = Livelihood
	#3			3 & 10 = Status In World
	#2	#4		4 = Home
Asc #9	#1	#13	#5 #11	5 & 11 = Others
	#8	#6		6 = Health
	#7			7 & 12 = Spouse
	#12			8 = Death
				13 = Resolution

The “Three Yes and No Questions” Layout  
 Ask 3 Questions Then Begin Again.  
 Per Query: Shuffle, Cut, & Count Every 7th Card.  
 Center Card Counts Double. Count + & - = Yes\No & Maybe

#1	#2	#3	#4	#5
	--			
#1	#2	#3	#4	#5
	--			
#1	#2	#3	#4	#5
	--			

The “Past Present and Future” Layout

(“Of Any Case & Time Period”)  
 #4 = Past, #11 = Present, #18 = Future  
 Left 3 = Inner, Right 3 = Outer Manifestations (e.g. Past 5,6,7)

#15	#16	#17	#18	#19	#20	#21
		---				
#8	#9	#10	#11	#12	#13	#14
		---				
#1	#2	#3	#4	#5	#6	#7

The “Pentacle” Layout

			# 1 = Karma
	#2	#3	# 4 = Physical
	#1		# 7 = Soul
#15		#5	# 10 = Spirit
#13		#4	# 13 = Spiritual Evolution
#14		#6	# 2, 5, 8, 11, 14 = Inner Manifestations
	#16		# 3, 6, 9, 12, 15 = Outer Manifestations (e.g. #3 = outer of Karma)
#11		#9	# 16 = Resolution
#10		#7	
#12		#8	

The “Celtic Cross” Layout.

	Pick # 1 & Save. Shuffle Deck.
	Stack # 2 on # 1 Crossed by # 3.
	# 1 = Query. 2 = Case. 3 = Situation.
	4 = Ideal. 5 = Solution. 6 = past.
	7 = Future. 8 = Self. 9 = Home.
	10 = Hopes & Fears. 11 = Outcome.
	#4 #11
	#1 #10
	#7 2& #6
	#3 #9
	#5 #8

The “Talking Tarot” Layout

Layout Right to Left. Write Message Left to Right  
 in Station # Order. Read Left to Right as Letters Phonetically.  
 Place a / Between 2 Vowels or Consonants In A Row.

	#13 (2nd deck)
	#12 #11 #10 #9 #8
	#7 #6 #5 #4 #3 #2 #1
	#7 #6 #5 #4 #3 #2 #1
	#12 #11 #10 #9 #8
	#13 (1st deck)
	Stop Card 1 or 2 = redo. Stop Card = End.
	Say Letter As In Trump Name?

The “Twelve House” Layout

Any Cycle Timed in 12ths

	#10
	#11 #9
	#12 #8
	#1 #13 #7
	#2 #6
	#3 #5
	#4
	13 = Resolution

The Stations are laid out as arrowheads.

“Count Gramalkin Star=Card Delineation Cross-Reference”

“Reversed Card Technique”: Shuffle 7X, Left Hand cut 3 even piles. Reverse center pile & restack to 1 pile. Shuffle 7X, cut 3 piles & restack “as you will” to 1 pile. Reversed cards = lower self manifestation. Some decks switch card numbers. Sun= Spirit. Moon= Soul. Mercury= Intellect. Venus= Love. Mars= Sex. Jupiter= Win. Saturn= Loose. Uranus= Intuition. Neptune= Imagination. Pluto= Death. Sun & Moon Illuminate, Mercury Expresses, Jupiter Venus Uranus = Good+, Mars Saturn Neptune Pluto = Bad-, Especially in Transit/Current Events.

Fire	=	Wands	Noon	Weeks	Clubs	South	Spirit (Sun)
Earth	=	Pentacles	Midnight	Years	Diamonds	North	The Physical
Air	=	Swords	Dawn	Months	Spades	East	(Intellect Mercury)
Water	=	Cups	Sunset	Days	Hearts	West	Soul (Moon)

Aces	=	Element		Read A “Sign” As it’s Motivating Planet.
Knights	=	Element In Action.		Aries = Mars   Leo = Sun   Sag = Jupiter
*				Taurus = Venus   Virgo = Merc   Cap = Saturn
Cardinal Cross	=	Kings		Gemini = Merc   Libra = Venus   Aqu = Uranus
Fixed Cross	=	Queens		Cancer = Moon   Scorp = Pluto   Pisces = Neptune
Mutable Cross	=	Pages (Jacks)		

“Major Arcana”

Planet	Card Name		Card	Constellation	Card Name	Card
	& letter		#	& letter		#
Sun	= Sun	= S	# XIX	Aries = O	= Emperor	# IV
Moon	= High Priestess	= I	# II	Taurus = V	= Hierophant	# V
Mercury	= Magician	= M	# I	Gemini = O	= Lovers	# VI
Venus	= Empress	= E	# III	Cancer = CH	= Chariot	# VII
Mars	= Tower	= O	# XVI	Leo = E	= Strength	# XI
Jupiter	= Wheel of Fortune	= E	# X	Virgo = I	= Hermit	# IX
Saturn	= World	= W	# XXI	Libra = U	= Justice	# VIII
Uranus	= Fool	= A	# 0	Scorpio = Stop	= Death	# XIII
Neptune	= Hanged Man	= Start Over	# XII	Sagittarius = T	= Temperance	# XIV
Pluto	= Judgement	= Stop	# XX	Capricorn = Stop	= Devil	# XV
				Aquarius = ST	= Star	# XVII
				Pisces = O	= Moon	# XVIII

“Court Cards”

	Kings (Cd)	Queens (Fx)	Knights	Pages (Mu)
Wands	Aries = P	Leo = V&X	Fire = E	Sagittarius = Z   Gramalkin™ ©1970
Pentacles	Capricorn = L	Taurus = U&X	Earth = R	Virgo = Y   v7-19.8
Swords	Libra = E	Aquarius = Y&C	Air = T	Gemini = A   The Tarot data is of ancient lineage.
Cups	Cancer = U	Scorpio = Y&C	Water = R	Pisces = U

“Minor Arcana”

	Wands		Pentacles		Swords		Cups
A)	Fire = B		Earth = I	(A)	Air = A		Water = E (A)
2)	Mars@Aries = I		Jupiter@Cap = O	2	Moon@Libra = I		Venus@Cancer = K (2)
3)	Sun@Aries = M		Mars@Cap = L	3	Saturn@Libra = Z		Mercury@Cancer = Y (3)
4)	Venus@Aries = J		Sun@Capricorn = F	4	Jupiter@Libra = U		Moon@Cancer = Q&H (4)
5)	Saturn@Leo = T		Mercury@Taurus = Z	5	Venus@Aqu = TH		Mars@Scorpio = A (5)
6)	Jupiter@Leo = O		Moon@Taurus = E	6	Mercury@Aqu = G		Sun@Scorpio = O (6)
7)	Mars@Leo = Y		Saturn@Taurus = A	7	Moon@Aquarius = V		Venus@Scorpio = S (7)
8)	Mercury@Sag = U		Sun@Virgo = D	8	Jupiter@Gemini = N		Saturn@Pisces = W (8)
9)	Moon@Sag = L		Venus@Virgo = I	9	Mars@Gemini = Y		Jupiter@Pisces = L (9)
10)	Saturn@Sag = A		Mercury@Virgo = SH	10	Sun@Gemini = O		Mars@Pisces = D (10)
	Wands		Pentacles		Swords		Cups