

Count
GRAMALKIN



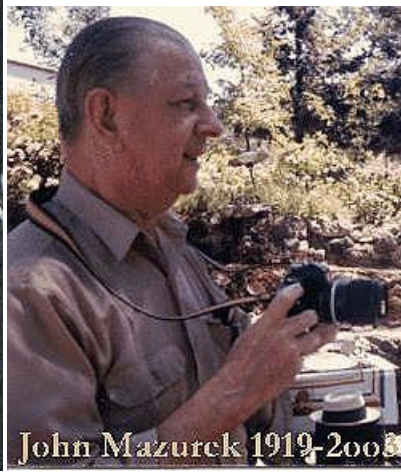
TAROT

MANUAL



<http://www.gramalkin.com>

Cyril Fagan (1896-1970)



John Mazurek 1919-2008

By Fagan out of Mazurek



“TAROT MANUAL”

By

Count Gramalkin

v4-24.12

“Sidereal Horoscopes”

*

By

Count Gramalkin

*

Western Sidereal Astrology Zodiacal Fixed Zodiac Astrologer - Tarot Reading

Spiritual Evolution Self Realization Truth Seeker Disciple - The Truth Changes Not

San Francisco School of Sidereal Astrology Intrinsic Values of the Planets Technique of Delineation

<http://www.countgramalkin.com> - 1.877.322.7238 Toll Free Order Number + Fax - CountGramalkin@Gramalkin.Com

*

"Introduction to Tarot Delineation"

*

San Francisco School of Sidereal Astrology Tarot Technique of Delineation

**

(v4-24.12)

*

If everyone understood it they wouldn't call it the mystery.

The cardinal sin of mankind is mistaking the apparent for the real.

"Attention Pattern Manipulates Mystic Law Creating Experience Attentions on God or Not

Reprogram Attention to Perpetual Meditation and Recreate the Miracle in Your Life." Count Gramalkin

*

The Intrinsic Values of the Planets Tarot Technique of Delineation

*

WARNING Reading this book has been known to cure Truth Blindness

**

This is an attempt to deliver a truthful rendition of the Intrinsic Value Technique, a scientific basis technique blended with The Art of Delineation that when properly practiced will consistently deliver accurate readings beyond "Psychic Guessing" or depending on how one feels at the moment etc. Anyone including children can consistently do accurate Tarot Card Readings (or any cast lot) given proper technique. The Intrinsic Value of the Planets (the meaning/delineation) and therefore the Intrinsic Value of the Planets Technique of Delineation comes from observation of event. What actually happened; birth, death, marriage, divorce, accident and inheritance ET cetera.

The situation at the time of this writing is there is no place to learn proper technique. It is impossible to grasp the amount of Mystic-Babble published about the Mystery. Self styled, self-taught, half-baked authority. Read a book on Zen and think their are Buddha. Read some Tarot books call that research then write one.

*

Even worse the drivel spouted by most of the ancient mystical organizations. This creates and perpetuates the old vicious cycle of artists and philosophers waxing recycled elucidation of Intrinsic Values who know not they are trying to describe or delineate an Intrinsic Value much less which one.

*

The artist trying to paint a picture of the King of Swords, The philosophers attempting to describe the King of Swords, when what they are really trying to describe or portray the foundation is simply Libra.

It is ok to try to describe, picture or portray an Intrinsic Value or Deity however groove the Deity rather than the worship the picture, statue or other artists or writers conception. "Count Gramalkin www.StarmanPress.Com v4-24.12 TM ©1970"

*

Astronomy, Medicine, Religion, Tarot, I Ching among other things are all based on, derivatives of Astrology. The first page of the Bible: "God made the SUN to RULE by day, the MOON to RULE by night" credentials Astrology.

*

The picture, number, and so forth portrayed on a card are irrelevant to the meaning of the card. Often in fact the picture is very misleading as to the Intrinsic Value of the card. One may cut seventy-eight pieces of paper with no picture or number at all and just write the name of the card on them. The King of Fire, Five of Earth, Wheel of Fortune ET cetera or even just the Astrological Symbology and Element of case. Aries\Fire (=King of Fire\Wands), Mercury in Taurus\Earth or Jupiter and the card means the same as it does when portrayed by the most elaborate glyphs and pictures, numbers or whatever.

*

Elaborate pictures whose symbology actually fits the Intrinsic Value at hand are just swell, however unnecessary. Often the portrayals

are a hodgepodge of cosmic drivel all gobbledgeoked together.

*

This again comes often from trying to picture something when one does not know what one is trying to portray. Various artists' portrayal of a given Intrinsic Value may be radically different, however the card still means the same.

*

The Intrinsic Value Technique baby, The Suns the Sun and the Moons the Moon every time and neither ones ever Venus.

*

One example reference states of the Red Twos ... Love is on the way. The Red Twos: of Earth (Diamonds\Pentacles) = Jupiter\Saturn (manic-depressive). Of Water (Hearts\Cups) = Venus\Moon, (love, hey they were half-right).

*

The number of the card is NOT its Intrinsic Value. In fact the numerical system used on the Major Arcana is a Major El Dummo. It should go Sun, Moon, Mercury, Venus, Mars et cetera in the common order of the Planets, then the Constellations in common order, Aries, Taurus, Gemini et cetera.

*

Talk about your basically impossible to portray is the tonnage of Mystic Gibberish printed and expressed. One continually reads wherein someone is spewing forth on how this little glyph here, this number et cetera, et cetera, et cetera, means the card means this or that, Sure Pal. Or run on about Alchemy et cetera this-en-that however never actually show one a formula technique to turn Lead to Gold.

*

About the shop it's called Cosmic Jive. Once one understands the Intrinsic Value of the Planets Technique of Delineation spotting Cosmic Jive comes quickly, easily, and inevitably. They start telling you the Spirit is the Soul the Sun the Moon et cetera and the big bell in the sky says Bong>!>!>!

"Sorting Out Truth From Falsehood"

**

In what we laughingly call Modern Medicine one thing they have going for them is synthesis of research. If some guy in Outer Mongolia discovers something everybody hears about it right away. The Mystery has little synthesis of research. Each little click, Cult, belief group has its own piece of the pie and there is little sharing and an ample amount of secrecy, jealousy, misinformation, and most groups and individuals will only believe and can only reach the Mythology they were reared to believe.

*

Tell the one the Myths of the other and you get the glaze daze. Yet historically if one does not believe that a given belief is the only possible philosophy exactly as some one sold it to them, they will get about maiming and killing everyone available until your convinced. These examples have been repeated throughout the history of people. The point here is that the true disciple gleans Truth from whence it comes.

Yes, Yes, I've heard of opinion in fact the only thing I take seriously is - my opinion, pal. Opinion however is often the last refuge of the pseudo intelligentsia. When they can not tell Truth from Falsehood they cry everyone is entitled to an opinion.

Truth is not a matter of faith, belief, awareness, agreement or opinion. Unless ones opinion happens to be "True" it is just more subconscious baggage. About the shop we call it "Truth." Truth is that which changes not, that which stays the same for all, forever, on all levels of being this side of vibration. That which appears to be changes constantly. It's a nice day, a fact or opinion. The Mystic Laws of Cause and Effect and Polarity a Truth regardless of opinion or awareness. The way I understand the situation Count Gramalkin material is all true.

*

Example: The misinformation spread by "Churchianity Syndrome Psychosis" (the Mythology I have Been Sold is the Only Possible Answer). The Churchianity Christian Syndrome Psychosis Politico Machine is such an easy example get past the hearsay propaganda and too what can be proven about them due to western civilization exposure to thousands of years of absolute proof they do not have or yield divine guidance and are way guilty by commission and omission of exhortation protection racketeering through murder, error; lies, fraud, fear and guilt in their doctrine - document - modus operandi they would be against one speaking with a Seer / Fortuneteller. If one depends on organization, document or doctrine to supply ones Spiritual Evolution one is in trouble. Once one transcends worship of organization or doctrine documents dependency psychosis and accepts the responsibility of "Spiritual Evolution Self-Realization Truth Seeker Disciple" it is a whole new cosmos out there. The Christian version of Churchianity is of the classical form "the Mythology I have Been Sold is the Only Possible Answer and is totally and completely true.....as convenient and the answer is only someone else can know the answer the deity is elsewhere. They love to tell things like it says in the Bible not to get readings. Ah, then you take an eye for an eye? Err, da, uhh, would you settle for an "it also says?" True by convenience we won't count the first page of the Bible "this time." Refrain being bullied about the mystery.

*

The True by Convenience Technique is commonplace through out the entire history of man. Considering the track record of the bilge spewed forth by the Churchianity Christian politico machine, ("The reason Angels can not stop bullets is bullets are propelled by Demons???) it is clear why they do not want followers speaking with Seers. They fear exposure for selling Truth Blindness posing as Blind Faith. Those with divine guidance refrain from centuries of murdering everyone who knows the earth orbits the sun. Every Christmas they love to bludgeon one with the wise men also the Dead Sea Scrolls to validate their mythology. The wise men were the astrologers who predicted the birth of a Christ. You can not have it both ways. Declare astrology is the works of the devil then use astrology to validate your mythology



* * *

“Sidereal Horoscopes”

*

By

Count Gramalkin

*

Western Sidereal Astrology Zodiacal Fixed Zodiac Professional Astrologer

Spiritual Evolution Self Realization Truth Seeker Disciple - Truth Changes Not

San Francisco School of Sidereal Astrology Intrinsic Values of the Planets Technique of Delineation

<http://www.countgramalkin.com> - 1 877 322 7238 Toll Free Order Number + Fax - CountGramalkin@CountGramalkin.Com

*

“Learn Tarot Modus Operandi”

**

The Cardinal Sin Of Mankind Is Mistaking The Apparent For The Real

*

Attention PATTERN Manipulates Mystic Law Creating Experience Attentions on God or Not

*

The allopathic psychiatrist must ask the patient how they feel about it, the great reader tells them.

*

Each numbered article edition has new material added to it. The highest number is the newest edition this one is v4-24.12.

**

To be an efficient Tarot Card Reader one MUST have sight recognition at least of the astrological cross-reference to the cards and have a Second Nature Realization of the Intrinsic Values of the Planets. This technique lets one get beyond "Psychic Guessing" and depending on how one feels at the moment etc. Properly done this is actually quite easy as there are only ten planets and seventy-eight cards.

*

When they can not tell true from false they claim opinion. Truth is neither a matter of opinion, faith, awareness or agreement. Truth is that which changes not, that which remains the same for all, in every case, on all levels of being this side of vibration.

*

Astrology, Tarot, any of these techniques one is dealing with a set of SYMBOLOGY for the PSYCHOLOGICAL CONDITIONS one is dealing with. These conditions show how we relate to things and therefore how things happen to or for us, *Mystic Laws of Cause and Effect*, et cetera. Tarot Cards (all cast lots) show the future for the way things stand now unless something is done to effectively change the case at hand, which is what we are about.

“The Intrinsic Value of the Planets”

**

For practical purposes the intrinsic values of the planets equals the intrinsic value of their corresponding constellation. Mars = Aries or read Aries as Mars et cetera. Yes there are the Solar Crosses - Cardinal, Fixed, Mutable the Fire, Earth, Air, Water elements and such however Venus is Venus and Jupiter is Jupiter every time.

*

The way to do the planets is to learn one planet a week or one planet a day if you are a quick study. The idea is to take them one at a time until each planetary intrinsic value is second nature to you without having to think about it rather than trying to learn them all at once.

“The Tarot Cards”

**

The easy way to learn the delineation of the Tarot Cards is to first learn the astrological cross reference to the Major Arcana cards then the Court Cards and finally each individual suit of the Minor Arcana cards. Waite Rider Mini and Albino and Agmuller Crowley Mini Tarot Card Decks are recommended. The words on the Crowley cards are mostly wrong. It's intrinsic values that count.

“The Major Arcana”

**

The Major Arcana of the Tarot is simply symbology for the planets and zodiacal constellations. Card numbers 0-21. Begin by arranging the Major Arcana cards in common order. Sun, Moon, Mercury, Venus, Mars, Jupiter Saturn, Uranus, Neptune, Pluto, Aries, Taurus, Gemini, Cancer, Leo, Virgo, Libra, Scorpio, Sagittarius, Capricorn, Aquarius, Pisces.

*

With the Major Arcana arranged by planet and sign order it is much easier to get into the flow than when the arrangement is scrambled via card number. “Count Gramalkin www.StarManPress.Com ™ © 1970”

* * *

*

The way to learn the card cross-reference of the cards to the planets is to use the flash card technique they use to teach children the alphabet. It is ever so easier to do readings when the cross-reference is second nature, unnecessary to check the cross-reference for every card in a multiple deck reading. One may just draw the cross-references in the border of the cards however by far the preferred technique is sight recognition. Just keep the list in front of one and go through the stacks of cards in order until by rote one instantly recognizes at least the planetary symbology for each card. E.g. The Sun Card = The Sun.

*

In fact one may do a pretty decent reading using just the Major Arcana cards as long as the layout is kept small, e.g. the Octoscope Layout which is nine cards yet pretty much covers it is pushing the limit. The minimum layout is five cards.

“The Court Cards”

**

The Court Cards are easily remembered by their Solar Cross the Kings are the Cardinal Cross the Queens the Fixed Cross and the Pages the Mutable Cross. The Aces and Knights the element in pure form, Fire, Earth, Air, Water. The Aces are often the element Not in Motion. The Knights the Element in Motion also indicative of other peoples acting out ones problems via element, station, situation.

“The Minor Arcana”

**

Stack them up in order in four piles with the Court Cards by suit - fire, earth, air, and water. A, 2, 3, 4, 5, 6, 7, 8, 9, 10. Page, Knight, Queen, King. Take each suit one at a time and just flash card through them. The pattern of the Minor Arcana will soon appear.

“The Ritual”

**

In dealing with the actual mechanics of manipulating the cards first start with Grace from the Master and Angels, the most important part of the ritual. However, due to free will Angels generally refrain from forcing their help on one. One must ask for help to get it. The “Angels of the Light” are the ones in charge of getting the cards (the Cast Lot) in the correct Station (the Reader must delineate). For example: Master may I / we please ask you for your grace thank you. Please send Angels to watch over, guide, comfort, guard, protect, restore, tell us the truth help us realize the truth, stay with us until it is taken care of, thank you amen Om.

*

Without this step one is just wasting ones time, as there is no way to know (even given proper mechanics) the cards are in the correct Station. This Grace process also clears any residual Astral Garbage or leftovers from previous readings hanging about.

*

To begin the reading first realize exactly what is the query and time period. Decide which layout or layouts are best suited to solving the type of problem, situation, query, or will provide the information one needs. Shuffle seven times rearrange the deck between shuffles such as cut a section out of the middle of the deck and move it to an end or from one end to the other. *Always cut cards left-handed*. Cut into three piles; restack to one pile, as you will then deal. When using the *Reversed Card Technique* (reversed cards equal lower self or negative manifestation) shuffle seven times, cut into three even piles, reverse the center pile, restack into one pile and shuffle seven more times, cut into three stacks, restack into one pile then deal. One may rub the palms of the hands together a bit then pass the *palm* of the left hand over the three stacks, feel the high, medium and low energy pile and restack to one pile high to low then deal. Use a fresh deck for each layout.

*

On my desk one will generally find a hand full of “Rider\Waite” Mini and Albino Tarot Card Decks and a couple decks of Agmuller “Crowley” Minis. In my pocket a “Rider\Waite Mini.” The “Minis” are used because of convenience. The cards are small so a large “Layout” and or several “Layouts” may be done on a small table, and both the Crowley and Waite decks have beautiful pictures throughout. The Waite Mini Deck is proportioned like Tarot Cards, The Waite Albino Deck like Playing Cards.

*

One would say; first toss an “Octoscope General Reading Layout” with a Crowley. Then do a “Past\Present\Future\ Layout” to the left with a Waite Mini. Add a “Yes\No Layout” to the right with a Waite Mini and to the right of that another “Yes\No Layout” with a Waite Albino deck. This results in four Layouts on the table with each layout in a different deck of cards than the ones next to it so the decks do not accidentally get mixed together.

*

Angels can fly because they take themselves lightly.

*

Good luck love thank you amen Om,
The Reverend Count Gramalkin

* * *



“Sidereal Horoscopes”

By

Count Gramalkin

“Angels”

"How to Communicate With Them"

CountGramalkin@CountGramalkin.Com - 1 877 322 7238 Toll Free Order Number - www.CountGramalkin.Com

**

The Angels are most interesting beings, only too real they do exist, and are certainly worth the investigation of the disciple. The author has had many very real major experiences in dealing with the angelic experience. They have definitely saved my life on a good many occasions. More than enough Angelic contact to realize how real and cosmic they are. It is said the Angels of Light are beings who have never fallen (gotten caught in their lower self, (what most people know as reality)). The Angels will indeed help human beings if we will call for their aid when we need it. In fact they love to help for it is through service that they get to evolve. The Angels have proper motive and purpose of course rather than just helping one for their own self-gain. There are some basic techniques for dealing with the Angels herewith elucidated.

“Ground Rules For Calling Angels”

1. One has to ask for help to get it. We all have free will you know. Do to free will the Angels seldom go about forcing their help on people. "*Count Gramalkin*™ ©1970-v4-24.12"

*

2. Refrain from telling the Angels their business. Rather than request the Angels to specifically do this and that best policy is to just ask then to watch over, guide and comfort you et cetera; then leave it up to them.

*

3. The Angels like a lot of formality when there is time. In an emergency situation just a cry for help will do.

*

The Angelic ritual used by the author is a completion of teachings from the Godheads and mentors of my acquaintance. This ritual is also often used as the “Grace Ritual” for doing a Tarot Reading. The idea is to do this ritual first thing in the morning, the last thing at night, every time one gets in the car, on the bike etc.

*

Through the Christ consciousness Master may I/we please ask you for your grace thank you. We are at one with the universal life force energy, it is now flowing through us and we feel it, it fills our every need. Divine will flowing through me in the name of the “Christ Self” will dissolve all those conditions that interfere with the normal flow of this individual; it has been said it is done so be it. Through the consciousness of the Christ please send Angels to watch over guide and comfort, guard, protect, restore, give grace and have mercy on my self, my personal reality and mundane current events. Please forgive human miscreation and misuse of divine energy substance and consciousness, put me in the right place at the right time for the right experience to expand my level of consciousness, distribute the colors as they should be through the bodies, awaken within anew the Christ Consciousness that it may grow in the coming years. Please help me to do it right, help me to fulfill my needs and stay until the situation is taken care of. Please get us all back together safe and sound. Through the Christ Consciousness thank you amen Om. Indecently when requesting the deity to forgive and restore one for some transgression rest assured best policy is to refrain from repeating the transgression. Also one may not plan to sin away their life then repent at the end and be saved.

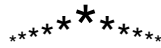
*

4. Ask the Angels to please stay until the situation is taken care of.

5. One may send Angels to help other people. An ill friend. A loved one. Or even mundane current events.

6. Refrain from crying wolf. Only call the Angels when they are needed.

7. Always say thank you. The Angels do not need your thanks. However as they may return to one twenty times what one sends out. Best policy is to (with proper motive and purpose and purity of heart) thank them.



“Sidereal Horoscopes”

By

Count Gramalkin

Western Sidereal Astrology Zodiacal Fixed Zodiac Professional Astrologer

Spiritual Evolution Self Realization Truth Seeker Disciple - Truth Changes Not

San Francisco School of Sidereal Astrology Intrinsic Values of the Planets Technique of Delineation

<http://www.countgramalkin.com> 1 877 322 7238 Toll Free Order Numger +Fax CountGramalkin@CountGramalkin.Com

“The Art of Accurate Delineation”

Is The Individual, and the Collective Intermingling of the Intrinsic Astrological Variables Count +&- Use Applicable Adjectives The Star Science essence of perceiving, reading, delineating, the ebb and flow ratio proportions of the interaction stack up distribution between the Intrinsic Astrological Variables - The Astrology PHD the Piled Higher and Deeper. “Count Gramalkin™ ©1970 v4-24.12”

**

First State Astrological Case Then Delineate

Example: The Planet = Subject. Constellation and Station = Application.

Sun in Aries. Read Sun = What; Read Aries (Mars) = How; On Ascendant Station = Where = You Are.

The Intrinsic Values Act Individually and Collectively.

Take the Intrinsic Value of one planet. It exists independently like it was the only one there. The Intrinsic Value of the other planet exists independently also. Due to the Law of Polarity (Yin Yang, + -) All the Intrinsic Values have higher =+ and lower self =- qualities.

Intermingle The Intrinsic Values They Also Exist Collectively

E.g. Jupiter = Happiness/Overindulgence. Venus = Love/Overindulgence. Jupiter Aspect Venus = Happiness/Love Double the Overindulgence.

Venus (Akin to Taurus & Libra) Psychological Positive = Love; Peace; Harmony; Beauty; Music; Musical: Art; Artistic; Sensuous; Charming; Femininity; Love and the capacity for love; Love nature and artistic temperament; Romantic Heart.

Jupiter (Akin to Sagittarius) Psychological Positive = Philosophical; Cheerful; Happy; Joy; Rejoice; Gay (Joyous); Optimistic; Hi-minded; Honorable; Professional; Religious; Nature Loving; Law-abiding; Aristocratic; Just; Aspiring; Opulent; Benevolent; Congenial.

Venus Jupiter Aspect Psychological Positive = Philosophical; Love; Cheerful; Peace; Happy; Harmony; Joy; Beauty; Rejoice; Musical: Gay (joyous); Artistic; Optimistic; Sensuous; Hi-minded; Charming; Honorable; Femininity; Professional; Love and the capacity for love; Religious; Love nature and artistic temperament; Nature Loving; Romantic Heart; Law-abiding; Aristocratic; Just; Aspiring; Opulent; Benevolent; Congenial. Read the ebb and flow ratio proportion interaction distribution stack up between the Intrinsic Astrological Variables.

To See How The Intrinsic Values Will Manifest.

Repeat the “Individually and Collectively Intermingling” Process With Their “Station and Situation.”

Example: Venus =Love; Peace; Harmony; Beauty; Music; Sensuous; Charming / Lazy Overindulgence on Station Nadir = Spouse is. On the Midheaven station = Career is.

In Taurus gives a nice Artistic Love foundation.

In the Saturn Lunar Mansion of Taurus = Happiness, Love, Artistic, add Stubborn, Frustrated and Denied, Patient and Practical heavier on the Overindulgence eTc.

Square Uranus the Intuition aids, ad’s excitement eTc eTc eTc.

Count Score On +&- To Read Higher/Lower Self, Yes/No/Maybe eTc.

Sun & Moon are lights & illuminate whatever is there; Mercury is neutral and expresses whatever is there; Jupiter, Venus, Uranus, Superior Angles = good +; Mars, Saturn, Neptune, Pluto, Inferior Angles = bad - = Most Common Manifestation Especially In Transit.

To delineate in any given sphere Use the Intrinsic Adjectives common to that sphere.

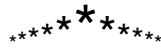
E.g. Venus - Psychologically = Love & Peace. Mundanely = Food & Clothes. Medically = Kidney eTc! ETC!!

The Art of Synthesis

To Synthesize a horoscope chart first look at the Sun taken by it’s self, then Moon by it’s self (Angular? Sign; Watch; House; Arabic Lunar Mansion), the Ascendant then Midheaven by their self (four equal quarters). Then the Angles (which solar cross/split cross eTc.), the most angular planet and its situation, the next most angular situation. There are usually two or three basic “the next most Angular situations.”

Manifesting

When there is an orange tail sticking around the corner and one grabs the tail rather than having a tail one actually has the entire Tiger. So it is with the “Intrinsic Values of the Planets.” When one identifies having hold of any part of an Intrinsic Value one actually has the entire planet (or Sign) by the tail. When one is happy one has Jupiter by the tail and therefore all of the Jupiter qualities good and bad. The idea is to consciously project the “higher self” or positive qualities of the Intrinsic Value of case rather than “lower self-essence dominated reacting” with the lower self-qualities. Read the Intrinsic Value of the planet in your notes and send out the + side. Also read the “Satsang”, “Self Realization” and “Daimoku” articles on CountGramalkin.Com and it will help you cope with all that reality nonsense. Be your HIGHER self.



* * *

“Sidereal Horoscopes”

By

Count Gramalkin

*

Western Sidereal Astrology Zodiacal Fixed Zodiac Professional Astrologer

Spiritual Evolution Self Realization Truth Seeker Disciple - Truth Changes Not

San Francisco School of Sidereal Astrology Intrinsic Values of the Planets Technique of Delineation

<http://www.countgramalkin.com> 1 877 322 7238 Toll Free Order Numger +Fax CountGramalkin@CountGramalkin.Com

*

Reverend Professor John Mazurek

San Francisco School of Sidereal Astrology Director

"Planetary Notes"

*

The angles symbolize the periphery of the fully awakened consciousness and indicate the lines of demarcation between the subjective and objective worlds. In particular the fixed stars that rise at the moment of birth, modified by the constellation than holds the Sun and the Moon, and by the influences of the planets that are in powerful configuration with the rising stars....these describe the signature of the physical body, will power, with its innate hereditary traits, but under no circumstances can the ascendant describe one's mannerism, moods and habitual and often and often unconscious behavior. Editors note: In his later years long after this was written Mazurek used to say the rising sign acts akin to a second moon and colors the mind, Count Gramalkin.

*

One's personal idiosyncrasies, the way on gesticulates, talks, walks, laughs, cries, eats and sleeps, the pattern of one's appetites and the state of one's health are signified by the Moon's configuration with the planets and the fixed stars.

*

One's personal idiosyncrasies, the way on gesticulates, talks, walks, laughs, cries, eats and sleeps, the pattern of one's appetites and the state of one's health are signified by the Moon's configuration with the planets and the fixed stars.

*

The Sun symbolizes energy or life, which physiologically expresses itself as vitality, and psychologically as desire....which in its momentary frustration gives rise to self-consciousness, which in turn solidifies into the Ego or Self. Hence the core of the individual, what he is at heart, his proclivities and character, and in short, his very being, signified by the Sun's configuration with the planets and fixed stars.

*

Therefore the natal Sun symbolizes all isolation and self-centered activities, the quest for supremacy, recognition, honor and fame, and the thirst for glory and renown. Should the Sun be in the foreground configured with the benefics, there will be garnered a full measure....but should it be located in the remote background and configured with malefics or even unaspected, the native will be without ambition and, with some exceptions, his name will not be inscribed in the Hall of Fame.

*

Should the Sun be on or in the angles, but afflicted by the malefics, the native will hold the headline's of the world's press for a while, gut die in oblivion, if not branded and execrated. When the Moon is in conjunction or opposition or angular aspect to the Sun, the manner tends to be lordly and condescending.

*

In a large family of boys born in humble circumstances, only one had the Sun in conjunction with Jupiter. In his case the conjunction fell in the 10th house. By his own diligent efforts, he rose to be one of the most successful and respected members of his native city; while his brothers remained as they were born, little better than paupers.

*

Moon

If the student of Astrology is at all aware of the thoughts that uninvited flit across his mind, he may notice that the Moon is transiting across his natal Sun, and he tends to indulge in idle daydreams wherein he figures as the hero in some exciting adventure or melodrama.

*

Progressions of the Moon

As a general rule, progressions and transits or the Moon to a planet signifies the emotional actions of the native....what he does to others. On the other hand, progressions and transits of the planets to the Moon....signify the reactions or the native to the actions taking place in one's environment. That is, reacting to what other people do to the native.

* * *

Mercury

Note: Mercury is the planet of self-expression. It symbolizes the processes of verbalization, writing and communication, and the nature and manner of one's conversation can be gleaned from the planet Mercury and its configuration with other planets.

Mercury the planet of thieves and mercenaries, When found in the foreground of charts, awakens and activates the intellectual activities of the native. Causes the native to impart information to others such as through teaching, selling, lectures, instruction, writing, publishing or debating. Generally speaking, Mercury signifies one's mechanical and mathematical ability and capacity to absorb and impart information. When one's Mercury is conjunct or opposite to the Sun of someone else, the Mercury native will impart ideas that influence the Sun native.

Venus

Venus is the planet of Peace, and Love and Venus symbolizes the "romantic heart" of the native, the love he feels and gives another. Venus is "in love" with any planet with which it is configured at birth not excluding malefics. The types of humanity which win the affections of the native may be deduced by the constellation occupied by Venus at birth; that is, in the birth horoscope chart. For examples, if Venus is found in Aries, affection may be lavished on those who wield power. Venus in Sagittarius has affection for clergymen, doctors and the titled. Venus in Aquarius, the interest would be for those who express a liking for exotic, or out of the ordinary subjects.

The Venus constellation often describes the fetish or the frustrated. When Venus is in the foreground or in elevation in the birth chart, the native is dominated by their love for others, often to the point that nothing else matters, so that love is the motive for one's existence. Known as "Venerable" Venus may, in advanced years and in a position to do so, become noted for charity. In youth, the native is a Casanova. Venus in a subordinate place in the birth chart will tend to delay or deny love and marriage of the native.

Venus in a subordinate place in the birth chart will tend to delay or deny love and marriage of the native.

Mars

Unpolished, rough, uncouth, noisy and loud-mouthed, prone to swearing, wiry, muscular and spoiling for a fight...hotheaded, impetuous, exalting in conflict. Mars or Aries is reckless, brave, easily succumbing to temptation, delighting in sport, machinery and mechanics, daring, often untidy. These are the characteristics of those born with Mars in the foreground. Mars is the Killer, the destroyer...who destroys for the pleasure of it. The exercise of power gives one immense gratification, but there is nothing essentially evil or vindictive about these Mars characters or personalities.

Jupiter

Jupiter bestows quality and richness. This, the greatest of the planets, ennobles the influences of every planet it confabulates, preserving, healing, and protecting. In every sense, it represents the Good. It represents the best of everything, clothes, schools, social life, in short, The Good Life. Those whose monies are derived from land, real estate, wills, legacies, bequests, interest on money held in trust...have Jupiter configured with Saturn Nataly. Jupiter configured with Uranus amasses money through speculation. The world of Show Business, the entertainer finds, will bring prosperity when Jupiter and Neptune are configured in the natal chart; but the money is soon dissipated. Jupiter configured with Pluto denotes ill-gotten money.

Saturn

This is the planet of conformity, inferiority, orthodoxy, economy, complexities, fear and hate. Configured with the Lights means all of the preceding, but also prudence...a talent for organization...and patience. It denotes longevity, Father Time, the dead, and land.

Uranus

The planet always found in the vanguard of advanced movements, revolution, the discarding of the old or outmoded. This is the planet of intuition, the inventor and scientist, and typifies the computer age. True Uranians are inspired geniuses of humanity, although in politics such people seem dictatorial simply because most of their fellow-men are too slow witted to keep up with them.

Neptune

The planet Neptune causes confusion so that the native becomes completely flurried. Neptune is the cause of an indefinable sense of inadequacy, that makes the native avoid responsibility and desire to escape into a secluded and leisurely world or congeniality a world of one's own choosing or making...frequently through alcohol or drugs. Art, music, fiction and science are the forte of Neptune.

Pluto

Pluto is a solitary worker, a poor mixer, and the eternal lone wolf. Sooner or later he breaks from his home, putting behind him all it represents in tradition and orthodoxy, or respectability, for the Pluto native is the eternal rebel. Shyness, crises, accidents, bickering, death, miracles and diffidence, remoteness, austerity and a sardonic smile are characteristics of this planet.

INTERPERSONAL RELATIONSHIPS

**

The study of interpersonal relationships involves the comparison of the planets and luminaries in one person's horoscope chart with the planets and luminaries in another's chart. Comparing the zodiacal celestial longitude positions does this, primarily by conjunction or oppositions with the planets of another. It is our contention that with no planetary interchange, there will not be a significant relationship, if in fact any relationship at all.

*

We have listed the nature of the various relationships which have been ascertained through considerable testing and analysis.

*

Carl Jung, the noted psychoanalyst, did an inter-personal study involving just such chart comparisons as we have mentioned. In his book "The Structure and Dynamics of the Psyche" he relates his study which involves the comparisons of the horoscopes of 483 married couples. The horoscopes were then compared to ascertain what planetary inter-changes were present in the charts of each of the married couples.

*

While this study was more quantitative than qualitative in nature, it did give succeeding researchers a starting point for interpersonal analysis.

*

Cyril Fagan, the father of modern day sidereal astrology and Thomas R. Stanton, of the Sidereal astrology school in Los Angeles, among others, have done considerable work on this field.

*

We suggest that you test the effectiveness of the combinations for yourself, as there is no substitute for actual experience.

*

By constellation via the five major aspects conjunction, opposition, square, trine, sextile you receive what planets are touched off in your chart. You give what planets are touched off in their chart. The Sun always gives you get what planets in your chart their Sun aspects. Planets give to angles; their planet on your angle equals what they give you

*

Sun to Sun = Good for business or friendship but not for romance.

*

Moon to Moon = Good for happy, lasting relationship. The emotions are in harmony. A good natural rapport exists.

*

Sun to Moon = Good for marriage for the Sun will "love" the Moon and the Moon reciprocates. The Sun leads and or "rules" and the Moon will usually go along with the Sun's wishes. This is an excellent combination for emotional rapport or ease relationship with one another. You feel comfortable with each other and find companionship very easy and unrestrained. This is a type of relationship one which one can sit together and be comfortable without feeling any strain in the relationship. With many people, you feel you have to do something of keep things going.

*

Sun or Moon to Mercury = This is not a romantic combination, there is an ability to communicate with each other.

*

Sun or Moon to Venus = This is a romantic aspect. Venus in a chart relates to our capacity to love. Therefore, the Sun or Moon turns this on.

*

Venus will be devoted to the Sun, being "in love" with the appearance, the spirit and the outlook of life of the Sun. Venus will love the Moon's behavior and bearing. This aspect is good for an enduring romance, understanding and companionship.

*

Sun or Moon to Mars = A good configuration for lovers but not always a good combination for a lasting tie. There is a strong attraction though it relates primarily to the passions.

*

With the Sun and Mars, each tries to dominate the other and Mars may at times irritate the Sun though the Sun can handle Mars.

*

The Moon is no match for Mars, Mars teases and tantalizes the Moon and loves to arouse the Moon's temper. With only this aspect, the "honeymoon" may soon be over and arguments ensue, for passion can easily turn to hatred.

*

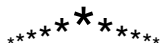
Sun or Moon to Jupiter = Jupiter will want to give to the Sun or Moon. It is good an "all around existence" together, though not a romantic aspect.

*

Sun or Moon to Saturn = This combination is not common in marriage or friendship and is rarely a happy one. Saturn tends to constrict or limit the luminaries and "clings" to them for security. The Sun feels "trapped" by Saturn.

*

Editor Note: Zero notes from this piece could be found about Uranus, Neptune or Pluto. However the most common manifestation of Uranus is excite, Neptune is confusion and Pluto crises.



“Sidereal Horoscopes”

By
Count Gramalkin

Western Sidereal Astrology Zodiacal Fixed Zodiac Professional Astrologer - Tarot
Spiritual Evolution Self Realization Truth Seeker Disciple - The Truth Changes Not

San Francisco School of Sidereal Astrology Intrinsic Values of the Planets Technique of Delineation

Read the ebb and flow ratio proportions of the interaction stack up distribution between the Intrinsic Astrological Variables

Due to the Law of Polarity Yin Yang+ - Planets Have Higher / Lower Self Qualities Count Score On +&- To Read Higher/Lower Self, Yes/No/Maybe e'l.c.

Most Common Manifestation=(mcm) Especially In Transit = Sun & Moon are lights & illuminate whatever is there; Mercury is neutral and expresses whatever is there; Jupiter, Venus, Uranus, Superior Angles = benefic good +; Mars, Saturn, Neptune, Pluto, Inferior Angles = Malefic bad -.

<http://www.countgramalkin.com> - 1 877 322 7238 Toll Free Order Number + Fax - CountGramalkin@CountGramalkin.Com

“San Francisco School of Sidereal Astrology Intrinsic Values of the Planets Delineation v4-24.12”

“Sun”

v2-6.12

1) Psychological:

(Akin to Leo)

Positive:

Spirit; Character; Consciousness; Awareness; Energy; Vitality; Life; Life Force; Supremacy; Basic Intelligence; Seat of Intelligence; Recognition and Honors; Dignity; Health; Self Promotion; Authority; Progress; Individuality; Magnanimity; Generosity; Common Sense; Self; The God-Head part of our self; Zenith of Spiritual Qualities (e.g. Illumination, Seership). “Count Gramalkin™ ©1970”

Negative:

Egotistical=mcm; Conceited; Tyrannical; Domineering and Opinionated.

*

2) Physical: Energy and Drive; Radiation of Life Force; The body (at this level the body is quite often surrounding the consciousness); Lean Physique; Right Eye (Spirit Window), Nostril, hand; Left-Brain; Masculine; Positive; Heat. (Leo = Shin; Ankle; Eyes I.E. Sight).

3) Medical: Eyes; Cell Salt? = Magnesia Phosphorica (M.P.), Gold.

4) Mundane:

Kings; Men; Presidents; Emperors; Commanders; Centers of Power; High Places; Executive Ability, You Personally; Religious Zeal; The Wife (in the husbands chart); Banks; Bankers; Yellow, Orange, White?, Gold (color and metal); Ruby; Amber; Father; God (masculine); Masters, Guru, Godhead; God of War; Most important planet in the “Natal Chart”; “Giver of Life”, “Taker of Death”; The heart of a person or matter; Illuminates whatever aspected to; How your friends or family know you; Acts of the self; #4 by night? By day #1. During deep sleep without dreams one is entranced in Spirit. Look with both of your eyes into the right eye see the window to the spirit looking into the left eye is the window to the soul.

“Moon”

v2-6.12

1) Psychological:

(Akin to “Cancer”)

Positive:

“Quantity and Quality” of the Mind; Soul; Emotions; Feelings; Personality; Psychic; Carnivorous Appetite; Astral, Astral Plane, Astral body; Sensitivity; Protectiveness; Compliance; Flexibility; Love of Home; The Servant or Service.

Negative:

Egotistical=mcm; Unstable; Petty; Immature; Frivolous, Changeable; Vacillating; Deluded; Clings too past.

*

2) Physical: Mind? Left Eye (Soul Window), Nostril, hand; Right-Brain; Feminine. (Cancer Knees).

3) Medical: Mind; Knees; Convulsions; Cell Salt? = Calcarea Phosphorica (C.P.) Silver.

4) Mundane:

Civil Service; Social Workers; Groups; Mobs; Crowds; Followers; Mothers; The Mother Church; The Husband (in the wife’s chart); Response to others acts; The Sea; Liquids; Negative; White, Silver (color, metal, & cell salt); Pearls; #7 by night? By day #2; Feminine; During sleep with dreams one is entranced in Soul. Cut hair waxing = grow fast and full, Waning grow slow and thin.

**

*

“Mercury”

v5-15.11

1) Psychological: (Akin to “Gemini” & “Virgo”)

Positive:

Intellect, Intellectual Activity; Educational Capacity; Logic; Acquisition; Adaptability; Dexterity; Youthfulness; Conversation; Mathematics.

Negative:

Autoreact / talk=mcm; Restlessness; The Wanderer; Nervousness; Dishonesty; Forgetfulness; Lack of concentration; Over-talkative; Prone to react with pre-conceived opinion; Intellect is different than true intelligence (Sun). Mercury may be able to remember and quote data however often has a shallow superficial understanding of the “Big Picture.”

*

2) Physical: Rules Lungs; Larynx; Bronchial Tubes; Hearing; Arms; shoulders and hands; Mouth. (Gemini = Eyes; Lungs; Nerves?; Virgo = Feet; Emerald).

3) Medical: Speech Defects; TB; Pneumonia; Cell Salt? = Kali Muriaticum (K.M.) (Gemini?), Kali Sulphuricum (K.S.) (Virgo?), Quicksilver, Mercury. “Count Gramalkin™ ©1970 <http://www.siderealastrology.net>”

Mundane:

Job; Schools and places of learning; Communication; Media; Telephone; Teletype; Mental Telepathy; Emerald; Green; Amethyst; Quartz Crystal; Travel; Talk; Hear; Teach; Study; Learn; Read/Write; Business; Selling; Salesmen; #5; How we interpret sensory input/output; Known to live by wits; Talks about what aspected to; The planet of thieves and mercenaries; Mercury is the planet of self-expression. It symbolizes the processes of verbalization, writing and communication, and the nature and manner of ones conversation can be gleaned from the planet Mercury and its configuration with other planets. When found in the foreground of charts, awakens and activities the intellectual activities of the native. Causes the native to impart information to others such as through lectures, instruction, writing, publishing or debating. Generally speaking, Mercury signifies one’s mechanical (?) and mathematical ability and capacity to absorb and impart information. When ones Mercury is conjunct or opposite to the Sun of someone else, the Mercury native will impart ideas that influence the Sun native.

“Venus”

v5-15.11

1) Psychological: (Akin to “Taurus & Libra”)

Positive:

Love; Peace; Harmony; Beauty; Musical: Artistic; Sensuous; Charming; Femininity; Love and the capacity for love. Love nature and artistic temperament; Romantic Heart.

Negative:

Vain; Selfish; Lazy; Overindulgent=mcm; Obese; Vulgar; Inconstant; Party Animal.

*

2) Physical: Throat; Thyroid; Kidneys. (Taurus = Pallace / Sex Organs; Libra = Head; Face).

3) Medical: Cell Salt? = Natrum Phosphoricum (N.P.) (Libra?), Natrum Sulphuricum (N.S.) (Taurus?), Copper.

4) Mundane:

Divine Protection; Tolerated; Finery; Shoes; Food; Clothes; Jewelry; Diamonds; Poetry; Entertainment; Friends; Music; Graciousness; Lyricism; Desirability; Femininity; Attractive; Beautiful; Gifts; Wealth; Blue; Women; The Beloved; Theater, Opera; Melody and Song; Social Clubs; Beauty Salons, Sweets; Spices; Perfumes; Copper; #6. Art and Artistry; The art world; Centers of fine art; Art Galleries; Babies and small children; Loves whatever it is aspected to. The planet of peace and love. Venus symbolizes the “Romantic heart” the love one feels and gives another. Venus is “in love” with any planet with which it is configured at birth, not excluding the malefics. The type of humanity which wins the affections of the native may be deduced by the constellation occupied by Venus at birth that is in the Natal birth chart. For example, if Venus is found in Aries, affection may be lavished on those who wield power. Venus in Sagittarius, affection for clergymen, doctors and the titled. Venus in Aquarius, the interest would be for those who expresses a liking for exotic or out-of-the-ordinary subjects. The Venus constellation often describes the fetish of the frustrated. When Venus is in the foreground or in elevation in the birth chart, the native is dominated by his love for others, often to the point that nothing else matters, so that love is the motive for one’s existence. Known as “venerable”, Venus may, in advanced years and in a position to do so, become noted for charity. In youth the native is a Casanova. Venus in a subordinate place in the birth chart will tend to delay or deny love and marriage for the native. “Count Gramalkin™ ©1970

<http://www.loveadvice.biz>”

**

*

“Mars”

v5-15.11

1) Psychological:

(Akin to “Aries”)

Positive:

Brave; Heroic; Courageous; Competitive; Pioneering; Executive Go-getter; Leader; Political; Action; Adventure; Spontaneous; Passionate; Sex.

Negative:

Impatient / Impulsive=mcm; Restless; Temperamental; Irritable; Headstrong; Foolhardy; Reckless; Wild; Vicious; Violent; Stress; Strife; Argumentative; Destructive; Bad-tempered or Quick-tempered; Aggressive; Brutal.

*

2) Physical: Genitalia; Muscles; Red Corpuscles. (Aries = Buttocks; Lumbar Region; Kidneys; Ovaries / Womb?).

3) Medical: Cuts; Wounds; Operations; Fevers; Inflammation; Anemia; Flu; Headaches, Tension (?); Cell Salt? = Kali Phosphoricum (K.P.) (Aries), Can be Calcarea Sulphurica (K.S.), Iron, Iodine. Count Gramalkin®™©1970 <http://www.solunars.info>”

4) Mundane:

Sex; Machinery and Mechanics; Motors; Motor Vehicles; Disturbances; Explosions; Thunderstorms; Riots; Wars; Warrior; Coral; Iron; Red; Unpolished; Rough; Uncouth; Noisy and Loud-mouthed; Often Untidy; Prone to Swearing; Wiry; Hot-headed; Impetuous; Reckless; Daring; Brave; #9; A man in the prime of life; Muscular and spoiling for a fight; Delighting in sport; Exalting In conflict; Easily succumbing to temptation. These are the characteristics of those born with Mars in the foreground. Mars is the killer, the destroyer -- who destroys for the pleasure of it. The exercise of power gives one immense gratification, but there is nothing essentially evil or vindictive about Mars’s characters or personalities.

**

*

“Jupiter”

v5-15.11

1) Psychological:

(Akin to “Sagittarius”)

Positive:

Philosophical; Cheerful; Happy; Joy; Rejoice; Gay (Joyous); Optimistic; Hi-minded; Honorable; Professional; Religious; Nature Loving; Law-abiding; Aristocratic; Just; Aspiring; Opulent; Benevolent; Congenial.

Negative:

Overindulgent=mcm; Extravagant; Ostentatious; Braggart; Status Conscious; Status Seeker; Social Climber; False Loyalties; Incompletion. “Count Gramalkin™©1970 <http://www.solunar.info>”

*

2) Physical: Wiry; Zealous; Fiery; Positive Acting. (Sagittarius = Arms; Hands Chest; Shoulders; Lungs Throat; Spine; Back; Thighs?).

3) Medical: Liver; Buckteeth; Sternum; Cell Salt? = Silica (S.); Tin.

4) Mundane:

Prosperity; Philosophy; Wealth; Money; Success; Win; Medicine; Healing; Nature; Spiritual Matters; Insurance Companies; Topaz; Purple; Turquoise; Religion; Religious Societies; Courts of Justice; Legal Matters; Government; Law; #3. Professionals - Doctors, Lawyers, Judges, Priests, Astrologers (Astrologers also have a lot of Mercury). Jupiter bestows quality and richness. This the greatest of the planets, ennoble the influences of every planet it configures preserving, healing and protecting. In every sense it represents the good. It represents the best of everything -- clothes, schools, social life -- in short, the “Good Life.” Those whose moneys are derived from land, real estate, wills, legacies, bequests, interest on money held in trust, have Jupiter configured with Saturn Nataly. Jupiter configured with Uranus amasses money through speculation. The world of show business, the entertainer fields will bring prosperity when Jupiter and Neptune are well configured in the natal chart, but the money is easily dissipated. Jupiter configured with Pluto denotes ill-gotten money.

*

*

*

*

**

*

“Saturn”

v5-15.11

*

1) Psychological: (Akin to “Capricorn”)

Positive:

Practical, Dependable; Stable; Patient; Faithful; Realistic; Organized; Planning; Self-disciplined; Stern; Exacting; Hard-working; Just; Serious; Severe (= - or + ?); Cautious; Diplomatic; Economical; Persistent; determined; Long-suffering.

*

Negative:

Stupid / Mistakes=mcm; Sad; Hate; Jealous; Fear; Doubt; Skeptic; Envy; Paranoid; Delay; Denial; Hassle; Restriction; Limitation; Selfish; Non-productive; Depression; Suspicious; Cruel; Bummer; Dictatorial; Slave-driving; Cheap; Miserly; Grim; Brooding; Melancholy; Stern; Tired; Exhausted; Inhibited.

*

2) Physical: Bony structure of the body; Teeth; Skin; Under-nourishment; Thin. (Capricorn = Breast / Chest).

3) Medical: Rheumatism; Bruises; Arthritis; Bone Injuries; Cell Salt? = Calcareo Phosphorica (C.P.) Lead.

4) Mundane:

Black; Sapphire; Lead; Obsidian; Onyx; Delay; Denial; Hassle; Restriction, Limitation and Loss; Mines; Work-houses; Laborers; Slaves; Farmers; Real Estate; Mountains and Rocks; Earthquakes; Old Age; Old Man, Grandfather; Father Time and Time; #8; Desolate or barren places or land; This is the planet of conformity, complexities, inferiority, orthodoxy, economy, fear and hate. One with a lot of negative Saturn influence will make a lot of stupid mistakes. Configured with the Lights means all of the preceding but also prudence, a talent for organization and patience. It denotes longevity and the dead. “Count Gramalkin™ ©1970 <http://www.siderealzodiac.info>”

**

*

“Uranus”

v5-15.11

*

1) Psychological: (Akin to “Aquarius”)

Positive:

Intuition, Excite / Excitement=mcm; Originality; Invention; Ingenious; Quick Wit; Unconventionality; Altruism; Humanitarian; Science; Instinct; Enlightenment (?); Thrills; Ahead of the times; Exotic.

*

Negative:

Eccentric; Erratic; Extremist; Unpredictable; Strange; Spasmodic; Obstinacy; Obsessive; Stimulant/Thrill Addict; Shock; Suicidal.

*

2) Physical: Nervous System. (Aquarius = Hart; Nervous System; Veins).

3) Medical: Cell Salt? = Natrum Mariaticum (N.S.) Radium, Uranium.

4) Mundane:

Change; Revolutions; Political Upheavals; Suicide/Suicidal especially when confused (with Neptune); Scientific Research; Gadgets; Electronics; Electrical Inventions; Electricity; TV; Motor Vehicles; Motors (a gadget); Plaids, and Changeable Colors; Opal; Uranium; Late, Late, Late; Shock; In Shock; #4. Sudden fast exciting change; New Experiences; Doors you didn't know were there open; Previously beyond grasp comes; The planet always found in the vanguard of advanced movements, revolution, the discarding of the old and outmoded. This is the planet of the inventor and scientist, and typifies the computer age. True Uranians are inspired geniuses of humanity, although in politics such people seem dictatorial simply because most of their fellow men are too slow to keep up with them.

*

*

*

*

*

*

**

*

“Neptune”

v5-15.11

1) Psychological: (Akin to “Pisces”)

Positive:

Imagination; Fantasy; Idealist; Theatrical; Pretension (+ / - ?); Dramatic; Sensitive; Absorption; Clever. Drawn to Mysticism, Musical, Poetic; Fascinated with Spirituality.

Negative:

Confusion / Escapism=mcm; Hysterical; Guilt; Worry; Anxious; Grief; Gullible; Naive; Unrealistic; Day-dreamers; Fraud; Schemers / Plotters (+ / - ?); Deceit; Delusion; Alcoholic Drug Addict; Supersensitive; Resignation; Quitter; Mistake the apparent for the real (the “Cardinal Sin of Mankind”). “Count Gramalkin™ ©1970

*

2) Physical: Large protruding eyes (women); Bushy Eyebrows (men); Tend too be stout. (Pisces = Abdomen; Navel; Digestive Tract).

3) Medical: Cell Salt? = Ferrum Phosphoricum (F.P.), Zinc. <http://www.stamanpress.com>”

4) Mundane:

Idealism (= -or+?); Cinema; Fiction; Thespian; Actors; Movies; Plays; Dramas; Confidence Rackets; Schemes; Scams; Photography; Gases; Jade; All stimulants alcohol’s and other drugs; A sucker and a trickster (can sell you the Golden Gate Bridge yet will buy it from you); # 7. The planet Neptune causes confusion, so that the native becomes completely flurried. The most common manifestation of Neptune is confusion. The most common confusion is escapism. The situation or someone is causing my experience. E.g. “You make me mad.” Neptune is the cause of an indefinable sense of inadequacy that makes the native avoid responsibility and desire to escape into a secluded and leisurely world of congeniality, a world of one’s own choosing or making -- frequently through stimulants alcohol and other drugs, a fascination with Art, Music and Science are the forte of Neptune? Successful actors = a positive Jupiter Neptune configuration.

*

“Pluto”

v5-15.11

1) Psychological: (Akin to “Scorpio”)

Positive:

Transition; Change; Miracles; Sensitivity; Authority in speech.

Negative:

Crises / Chaos;=mcm; In a perpetual state of crisis & chaos; Bitch; Critical; Argumentative; Needle, Bicker, Bitch, Bitch, Bitch; Shy; Aloof; Lonely, A Loner; Militant; Disruption; Destruction; Easily Embarrassed; Embarrassment; Timidity; Withdrawal; Hyper-critical; Pugnacious; Sneering Attitude; Sardonic Smile; Quarrelsome; Likes to “Needle” people; Causes Upheaval; Starts arguments “just for the heck of it.” Takes things personally as an affront, twists things around to apply to self personally as an affront. Puts nose where it doesn’t belong. Tries to save the world when cannot save self. Criticizes but cannot take criticism. “Count Gramalkin™ ©1970 <http://www.gramalkin.com>”

*

2) Physical: Short; Stocky; Muscular; Well Built; Lean Body; Heavy-set; “Plutonians” may appear fat but are not; Shaggy Beard. (Scorpio = Throat (snake like); Larynx; Thyroid; glands).

3) Medical: Fits; Seizures; Epilepsy; Convulsions; Paralysis; Poisons; Cell Salt? = Calcarea Sulphurica (C.S.), Cobalt, Plutonium.

4) Mundane:

Change; Miracles; The Four Horsemen of the Apocalypse - Death, Famine, War; Plague; Warrior; Fighter; Rebellion; Separation; Divorce; Hermit; Chaos; Accidents; The Underworld; Pestilence; Jasper; Plutonium; Occultism; #10; The Shaggy Generation; The end of a cycle (or relationship - usually unpleasantly); Poisons (e.g. gas if used as a poison); Kidnapping (may shanghai another or be shanghaiied ones self); The Atomic Bomb; During heavy “Pluto” transits one wants to blow off everything and move away; Accident and crises prone; Too boil it all down most common manifestation of Pluto is “Crisis.” Pluto is a solitary worker a poor mixer, the eternal lone wolf. Sooner or later one breaks from his home, putting behind him all it represents in respectability, tradition and orthodoxy, for the Pluto native is the eternal rebel. Shyness, diffidence, remoteness, austerity, and sardonic smile are characteristics of this planet. The secret to dealing with Pluto is the ability to adjust to the changes moment to moment rather than letting them build up into crises and to refrain from bicker and argue.

*

*

“Sidereal Horoscopes”

By

Count Gramalkin0

Western Sidereal Astrology Zodiacal Fixed Zodiac Professional Astrologer

Spiritual Evolution Self Realization Truth Seeker Disciple - Truth Changes Not

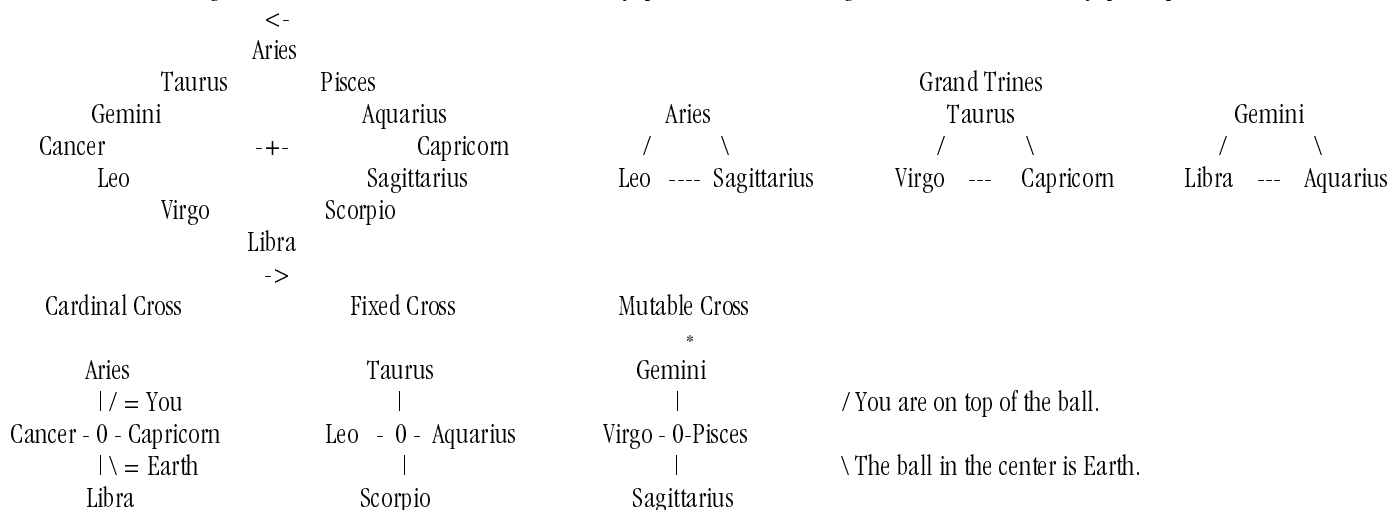
San Francisco School of Sidereal Astrology Intrinsic Values of the Planets Technique of Delineation

<http://www.countgramalkin.com> - 1 877 322 7238 Toll Free Order Numger + Fax - CountGramalkin@Gramalkin.Com

"The Intrinsic Value of the Solar Crosses and Grand Trine Triplicities"

**

Due to the fact that there are twelve “Constellations” or “Signs” within the circle of the “Zodiac” there are three natural “Solar Crosses” formed. “The Cross” emanates from within ones “Solar Plexus” and is symbolized astrologically by the Main Angles. The Ascendant (Rising Sign) \ Descendant and the Midheaven \ Nadir. The best case scenario is to have an even mix of all three crosses such as a Cardinal Sun with a Mutable Moon and a Fixed Ascendant with a Split Cross on the Angles (Leo Rising / Aries Midheaven). This tends to add balance to the case at hand. The leader that can do things themselves yet is adaptable, refrains from “I” have to be right all he time eTc. As now we know the elements fire earth air water in zodiacal Triplicities or trigon order is a fallacy to me the “Grand Trines” each of which include a sign from all three crosses simply show some balance in the application of the Intrinsic Values of the trine aspects involved Planet, Arabic Lunar Mansion, Fixed Star, Sign and Station. Example Venus @15 Aries trine Jupiter @15 Leo trine Uranus @15 Sagittarius = Venus Venus Mars (leader) trine Jupiter Saturn Sun (sergeant) trine Uranus Mars Jupiter (private).



**

The “Cardinal Cross” is symbolized in the Tarot by the “Kings”

**

The Cardinal Signs Symbolize the Leaders; Executives; Commissioned Officer; Top Ranked; Politically Motivated; “Cardinal Relationships” last a long time.

**

The “Fixed Cross” is symbolized in the Tarot by the “Queens”

**

The Fixed Signs Symbolize the Middle Management; Foreman; Non Commissioned Officers, Sergeants. They can actually do things themselves (fix the car eTc). They are in the center of activity. Make things hustle at the hub of activity. Management on the one hand Labor on the other. Phone and door bell always ringing. They are Industrious Determined; I.E. You can’t do that, yes I can. Sticktuitive. **"Gramalkin™ ©1970" v4-24.12"**

*

The “Fixed Constellation” Native tend to Brain-lock on their Bullheaded Fixations, Pushy, Meat headed, Obstinate, Stubborn, Inadaptable, Thick-headed Unreasonable. Even Physically they are “thick” people. The “Classic Case Fixed Constellation Native” is standing there banging its head on the rock. Why? “The idea came to me back in “37” and I have been here banging my head on this rock these many years hence.” Nothing anyone can say or do will help the “Fixed Native” realize there are better life conditions than banging ones head on the same old rock lifetime after lifetime after incarnation. Hey a guys got to at least change rocks now and again. Or get really radical and let the rocks bang on you for a change. In fact sometimes one can duck those boulders. Don’t move someplace under “Fixed” symbology, one can’t get out. “Fixed Constellation Relationships” can last a long time.

**

The “Mutable Cross” is symbolized in the Tarot by the “Pages”

**

The Mutable Signs symbolize the more common man; privates; laborers; workers. They are adaptable, don’t have to be “right” all the time. The Mutable Signs tend to be weak; unstable; unreliable; unbalanced easily shaken; vacillating; indecisive; mental sign, long on intellect short on will power (especially Gemini and Virgo); get shoved around; let someone else do the hard job, take the easy job. Mutable Constellation Relationships tend to be short lived.



"Sidereal Horoscopes"

By

Count Gramalkin

**

Western Sidereal Astrology Zodiacal Fixed Zodiac Astrologer - Tarot Reading

Spiritual Evolution Self Realization Truth Seeker Disciple - The Truth Changes Not

San Francisco School of Sidereal Astrology Intrinsic Values of the Planets Technique of Delineation

www.countgramalkin.com 1 877 322 7238 Toll Free Order Number + Fax CountGramalkin@Gramalkin.Com

"Planets = Signs Glyphs And Constellation Dates"

v4-24.11

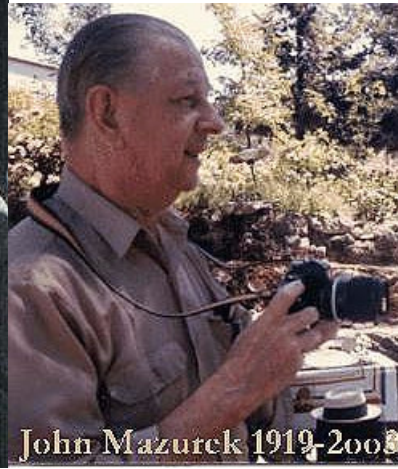
<i>Aries</i>	=	♈	=	♂	=	<i>Mars</i>
<i>Taurus</i>	=	♉	=	♀	=	<i>Venus</i>
<i>Gemini</i>	=	♊	=	☿	=	<i>Mercury</i>
<i>Cancer</i>	=	♋	=	☾	=	<i>Moon</i>
<i>Leo</i>	=	♌	=	☼	=	<i>Sun</i>
<i>Virgo</i>	=	♍	=	☿	=	<i>Mercury</i>
<i>Libra</i>	=	♎	=	♀	=	<i>Venus</i>
<i>Scorpio</i>	=	♏	=	♇	=	<i>Pluto</i>
<i>Sagittarius</i>	=	♐	=	♃	=	<i>Jupiter</i>
<i>Capricorn</i>	=	♑	=	♄	=	<i>Saturn</i>
<i>Aquarius</i>	=	♒	=	♅	=	<i>Uranus</i>
<i>Pisces</i>	=	♓	=	♆	=	<i>Neptune</i>

**

GMT 0° Fagan Spica 29° 6':5" Zodiacal Sidereal Constellations Signs Dates Epoch 2000

<i>Aries</i>	=	<i>April 14th</i>	<i>Libra</i>	=	<i>Oct 17th</i>
<i>Taurus</i>	=	<i>May 15th</i>	<i>Scorpio</i>	=	<i>Nov 16th</i>
<i>Gemini</i>	=	<i>June 15th</i>	<i>Sagittarius</i>	=	<i>Dec 16th</i>
<i>Cancer</i>	=	<i>July 18th</i>	<i>Capricorn</i>	=	<i>Jan 16th</i>
<i>Leo</i>	=	<i>Aug 17th</i>	<i>Aquarius</i>	=	<i>Feb 14th</i>
<i>Virgo</i>	=	<i>Sept 17th</i>	<i>Pisces</i>	=	<i>March 15th</i>

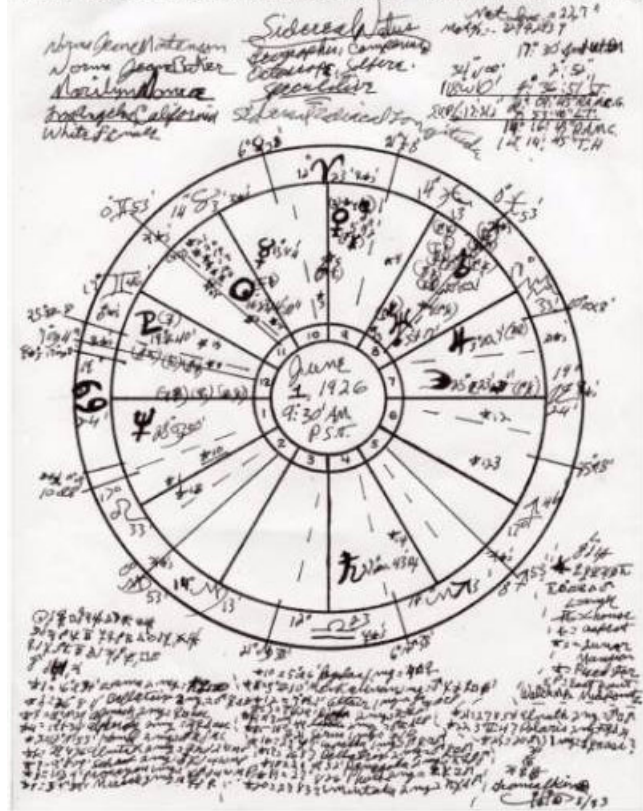
Cyril Fagan (1896-1970)



John Mazurek 1919-2003

By Fagan out of Mazurek

Western Sidereal Astrology Horoscope Example - Marilyn Monroe Natal Chart



The San Francisco School of Sidereal Astrology
Intrinsic Values of the Planets Technique of Delineation

The Count Gramalkin.com Free eBooks Library

By

Count Gramalkin

"Sidereal Horoscopes"

By

Count Gramalkin

**

Western Sidereal Astrology Zodiacal Fixed Zodiac Astrologer

Spiritual Evolution Self Realization Truth Seeker Disciple - Truth Changes Not

San Francisco School of Sidereal Astrology Intrinsic Values of the Planets Technique of Delineation
www.countgramalkin.com -1 877 322 7238 Toll Free +fax - CountGramalkin@CountGramalkin.Com

4-24.12

"The Count Gramalkin.com Free eBooks Library"

The Mystery of Life - How to Better Read and Predict It - What to Do About It

The Old Man always said that if you can't put it in a pamphlet you don't understand the situation.

**

Announcing the <http://www.countgramalkin.com> Free eBooks Library spiritual evolution astrology horoscopes and tarot techniques give-away with the Cyril Fagan - John Mazurek - Count Gramalkin San Francisco School of Sidereal Astrology Technique of Delineation. Learn foretelling the future tell one own fortune new edition eBooks now given away with zero spyware spam virus. Open the site then click on the Book Information and Stars Equals Cards tabs. The essence synthesis resolution of the cumulative world history of astrological research by millions of people from many civilizations over the last 10,000 years with the truth and falsehood sorted out of it in an absolute proof cash on the line ground of being.

**

The Count Gramalkin Fortune Teller Manual

The Fortune Teller Manual Teaches you how to do a professional quality reading and pretty much covers the subject from "always ask for grace before doing anything transcendental" to "compassionate yet detached". Current Edition = 26 pages = 5 pages Graphics and Charts - 21 pages of Text available at this URL http://www.starmanpress.com/printable_versions/tell_your_own_fortune_by_count_gramalkin.pdf

**

The Count Gramalkin Tarot Manual

The Tarot Manual concentrates specifically on learning how to do a Tarot Card Reading. The "Tarot Manual" will get anyone started and make an astrologer or Tarot Reader or anyone else who understands the intrinsic values of the planets a fabulous Tarot Reader overnight. Current Edition = 25 Pages - 6 Pages of Graphics and Charts - 19 Pages of Text available at this URL

http://www.loveadvice.biz/printable_versions/introduction_to_tarot_by_count_gramalkin.pdf

**

Astrology Manifesto by Count Gramalkin

My masterpiece so to speak is written for astrologers. The layman would need quite a bit of definitions to understand it. Astrology Manifesto is the combined current editions of the manifesto article and the San Francisco School of Sidereal Astrology Technique - Current Edition = 47 pages - 18 pages of charts and illustrations - 31 pages of text with that nicely resolves the world history of astrological research with the truth and fallacy proven out of it in an empirical research absolute proof ground of being (money) that ought to scare you a little is available at

this URL. http://www.gramalkin.com/printable_versions/astrology_manifesto_by_count_gramalkin_sidereal_astrologer.pdf

**

The San Francisco School of Sidereal Astrology Intrinsic Values of the Planets Technique of Delineation

by

Count Gramalkin

The entirety of the essence of the Cyril Fagan of Dublin, Ireland his chosen heir the Reverend Professor John Mazurek director of the San Francisco School of Sidereal Astrology Count Gramalkin legacy lineage. The contents include The San Francisco School of Sidereal Astrology Intrinsic Values of The Planets Technique of Delineation as applied to horoscopes and cast lots such as tarot with a bit of explanation elucidation that teaches a lot about the mystery of life, how to read and predict it and what to do about it. The Current Edition = 66 Pages - 15 pages of Graphics and Charts - 51 Pages of Text. Written for all layman or professional. Available at this URL.

http://www.westernsiderealastrology.info/printable_versions/sidereal_astrology.pdf

**

The San Francisco School of Sidereal Astrology Technique

by

Count Gramalkin

This quick reference version is the heart and soul, the nuts and bolts, just The San Francisco School of Sidereal Astrology Technique of Delineation by its self without explanation. Current Edition = 42 pages, 15 pages of charts and illustrations with 27 pages of text written for astrologers. Available at this URL http://www.siderealastrology.net/printable_versions/sf_school_sidereal_astrology_technique_by_count_gramalkin.pdf

**

Marilyn Monroe Western Sidereal Fixed Zodiac Natal Birth Horoscope

In The San Francisco School of Sidereal Astrology Technique

By

Count Gramalkin

Done Geographically - With the Campanus Table of Houses - Octoscope Watch and East Point Angles - SolFire Ephemeride - Arabic Lunar Mansions - Major Fixed Star Aspects - Constellation Brakes - Speculative - Current Edition = 44 Pages - 21 Pages of Graphics and Charts - 23 Pages of Text http://www.loveadvice.biz/printable_versions/marilyn_monroe_sidereal_horoscope_by_count_gramalkin.pdf

**

The Count Gramalkin "Sidereal Zodiac Horoscopes Chronicles" Current Edition

by

Count Gramalkin

This piece is a collection of articles containing information that is mostly included in some form or other elsewhere on www.countgramalkin.com all together in one place. It is mostly just me prattling on elucidating explanation about the mystery of life how to read and predict it and what to do about it. The Current Edition = 114 pages - 21 pages Graphics - 88 pages of text Available at this URL http://www.solunars.info/printable_versions/the_count_gramalkin_sidereal_horoscope_chronicles.pdf

**

India Astrology

by

Count Gramalkin

There is often a bit of query about the India astrology so here is The San Francisco School of Sidereal Astrology report. Current Edition = 37 Pages - 15 Pages of Graphics and Charts - 22 Pages of Text http://www.siderealzodiac.info/printable_versions/india_astrology_by_count_gramalkin.pdf

**

The Arabic Lunar Mansions

by

Reverend Professor John Mazurek

The San Francisco School of Sidereal Astrology Director Cyril Fagan's Chosen Heir The Reverend Professor John Mazurek's Arabic Lunar Mansions Report. Current Edition = 47 Pages - 17 Pages of Graphics and Charts - 30 Pages of Text available at this is URL http://www.siderealzodiac.info/printable_versions/mazureks_arabic_lunar_mansions.pdf

**

The Jesus Nativity Horoscope

by

Reverend Professor John Mazurek

The "Jesus of Nazareth Nativity" by the Reverend Professor John Mazurek is presented as an excellent example of the San Francisco School of Sidereal Astrology Technique of Delineation. Current Edition = 70 Pages - 21 Pages of Graphics and Charts - 49 Pages of Text is available at this URL http://www.eclipses.biz/printable_versions/jesus_nativity_by_reverend_john_mazurek.pdf

**

The Schmersanski Technique of Homeopathic Tissue Cell Salt Application

by 46 Pages - 17 Pages of Graphics and Charts - 29

Count Gramalkin.com

The Schmersanski Technique of Homeopathic Tissue Cell Salt Application Of Dr W.H. Schuessler's Inorganic Biochemic Theory In The San Francisco School of Sidereal Astrology Technique of Delineation Current Edition = 46 Pages - 17 Pages of Graphics and Charts - 29 Pages of Text available at this URL http://www.solunar.info/printable_versions/schmersanski_cell_salt_technique_by_count_gramalkin.pdf

Fixed Stars and When They Count in Horoscope Delineation
by

Count Gramalkin.com

A one page chart of the 44 major fixed stars and their delineation arranged in degree order for fast reference when checking fixed star aspects to a horoscope file available at this URL http://www.countgramalkin.com/printable_versions/fixed_stars_by_count_gramalkin.pdf

**
The Intrinsic Values of the Planets
by
Count Gramalkin

San Francisco School of Sidereal Astrology Technique Explains The Meaning or Intrinsic Values of our Cosmic Sphere Planets in Horoscope and cast lots such as Tarot Card Delineation. Current Edition = 27 Pages = 12 Pages Graphics and Charts - 15 Pages of Text
http://www.solunars.info/printable_versions/intrinsic_values_of_the_planets_by_count_gramalkin.pdf

**
Stars = Cards Delineation Cross-Reference and Tarot Layouts
by
Count Gramalkin

The Cross Reference Between the Planets and the Tarot Cards also Many Other Things and Seven Great Tarot Card Layout Charts Adequate to Deal With Most Any Situation available at this URL. http://www.solunar.info/printable_versions/count_gramalkin_layouts_stars_cards_chart.pdf

**
The Art of Horoscope Production
by
Count Gramalkin

In the physical production of the horoscope, the actual piece of paper with the astrological map of our cosmic sphere drawn on it there are two main varieties of horoscope charts in the complete file format baseline, base charts and composite charts which are color coded to expedite quick recognition. Current Edition = 37 Pages - 15 pages of Graphics and Charts - 22 Pages of Text available at this URL.
http://www.westernsiderealastrologyzodiacyrilfaganhoroscopecartotreading.us/printable_versions/horoscope_production_by_count_gramalkin.pdf

**
The Art of Horoscope Synthesis
by
Count Gramalkin

The Art of Horoscope Synthesis is one of the major keys to being able to actually read and comprehend the essence of the meaning or delineation of the horoscope chart. It is the manner or technique with which one approaches the horoscope. The combining of parts or elements as to form a whole. The Art of Synthesis is how we apply the Art of Delineation. The Intrinsic Values of the Planets and Angles are the elements of the Art of Delineation. The Art of Delineation is how we interpret the Technique of Delineation. Current Edition = 40 Pages - 14 pages of Graphics and Charts - 25 Pages of Text. http://www.westernsiderealastrology.us/printable_versions/art_of_horoscope_synthesis_by_count_gramalkin.pdf

**
Horoscope Wheel - San Francisco School of Sidereal Astrology

A one page printable version of the blank horoscope wheel recommended by the San Francisco School of Sidereal Astrology as the most efficient wheel to use drawing hand drawn horoscopes. Horoscopes must be hand drawn as at the time of this publication zero computer programs are available that will correctly produce a horoscope much less the complete full file horoscopes baseline. http://www.loveromanacemoneyhealthadvicetarotastrologyreadingfortunetold.us/printable_versions/horoscope_wheel.pdf

All Of THE ABOVE

This Library Loads Current Edition - Quick Check Source Page For Newest Editions
Create a Count_Gramalkin Folder On Your Desktop And Save As The Newest Edition

http://www.countgramalkin.com/book_information.html - http://www.countgramalkin.com/gramalkin_layout_chart.html

Also Free Horoscope and Midpoint Calculator Programs

<http://www.halloran.com> Customize Use Fagan Zodiacal Sidereal Zodiac Csmpanus Houses Birthplace - <http://www.noendpress.com/pvachier/midpoints/index.php>

*** ** *

**

"Sidereal Horoscopes"

By

Count Gramalkin

**

Western Sidereal Astrology Zodiacal Fixed Zodiac Astrologer - Tarot Reading

Spiritual Evolution Self Realization Truth Seeker Disciple - The Truth Changes Not

San Francisco School of Sidereal Astrology Intrinsic Values of the Planets Technique of Delineation

<http://www.countgramalkin.com> 1 877 322 7238 Toll Free Order Number + Fax CountGramalkin@Gramalkin.Com

Attention Pattern Manipulates Mystic Law Creating Experience Attentions on God or Not Reprogram Attention to Perpetual Meditation

Each Edition Has New Material Added To It. The Highest Number / Date Edition Is The Newest Edition.

The Allopathic Psychiatrist Asks the Patient How They Feel About It The Great Reader Tells Them

The Path of the Planets Around the Sun Is The Zodiac and Path Don't Move

The Cardinal Sin of Mankind is Mistaking the Apparent For The Real

**

"The Mystery Revealed"

**

*** ** *

"Order "The Mystery Revealed" eBook Current Edition by Count Gramalkin Copyright and TradeMark TM ©

The Reverend Professor John Mazurek said; "Oh Gramalkin, I read your book. In fact I read it twice. Very good Gramalkin, very good".

"Anyone, you too may make a fortune or save one doing your own Readings with the Intrinsic Value Technique in The Mystery Revealed."

*

"A timeless manuscript that will remain valid."

To order The Reverend Count Gramalkin eBook "The Mystery Revealed" Premium Edition which explains the mystery of life, how to better read and predict it and what to do about it PayPal a \$29 minimum donation to eBook@Gramalkin.Com = eBook at Gramalkin.Com. The Mystery Revealed eBook will be emailed to your PayPal email address. Copy and paste or state eBook Title in order form when possible. Log in to your PayPal Account. www.paypal.com - Title = "The Mystery Revealed"

*

The Count Gramalkin eBook "The Mystery Revealed" that gives a realistic explanation of the "The Mystery of Life How to Read and Predict it and What To Do About It", also How To Do Your Own Astrology and Tarot Card Readings (all cast lots), is being released beginning with the as is early rough draft Current Edition of the finished product and it is still way worth the minimum donation. The information pages articles on www.countgramalkin.com are excerpts from the Mystery Revealed and are included in the book as well as the current edition of the original text. Including the Introduction to Tarot, the Table of Contents and for all you Astrologer buffs there is also the San Francisco School of Sidereal Astrology Technique of Delineation; the Count Gramalkin "Sidereal Horoscopes Chronicles" and Gramalkin's address on "Learn to Tell Your Own Fortune". This address explains God, the meaning of life, the secret of the cosmos how to read / predict it and what to do about it, astrology, a bit on health care, the San Francisco School of Sidereal Astrology Intrinsic Value of the Planets Delineation Technique applied to Horoscopes and Cast Lots such as Tarot.

The Count Gramalkin Changes in Green Club

Also available is the Count Gramalkin "Changes in Green Club", a minimum sweet sixteen dollar a month donation eMail information service subscription membership club related to - The Mystery of Life How To Better Read and Predict It and What To Do About It - for the extremely motivated Spiritual Evolution Self Realization Truth Seeker Astrology, Tarot Cast Lots Reader Mavens. A lot of professional readers use this service. People who are trying to improve the quality of their readings and enhance the life condition of their clients and themselves who need the newest edition. Sort of an ongoing class scenario of whatever class notes come up and all changes or additions that are made in the material. Count Gramalkin policy to keep track of changes and additions to the material is all changes and additions are coded in green type on the work sheet. Having a copy of the worksheet as well as the finished product lets one quickly locate changes in the text. An attempt is made to incorporate response to a certain amount of relevant query into the published material. Query related to the mystery of life how to better read and predict it and what to do about it. Response related to astrology, tarot, spiritual evolution, health, doing ones own readings technique rather than giving you a reading. Give a man a reading they have a moment teach a man to read they have a lifetime. Minimum donations of sixteen dollars a month via PayPal emailed to Changes_In_Green_Club@CountGramalkin.Com received by the first of the month receive the month's information eMailed to your PayPal EMail address. The amount of information forthcoming ebbs and flows. Zodiacal Western Sidereal Astrology Horoscopes Tarot Reading and Western Sidereal Zodiac Astrologer
Good luck love thank you amen Om to us one and all, Count Gramalkin

1-877-322-7238 Toll Free Order Number - CountGramalkin@CountGramalkin.Com - *Count Gramalkin* TM © StarManPress.Com 1970 ###-30-***

“Count Gramalkin Layout Chart”

Most of the Layouts are of ancient lineage. Always start with a Complete Deck all facing the same direction. Be calm. Ask Grace of the Angels of Light. Shuffle 7X. Left Hand Cut 3 Piles. Restack “As You Will” To 1 Pile, Deal. Layout cards in numerical order. Gramalkin©™ @1970 v12.-25.5

<p style="text-align: center;">The “<u>Octoscope</u>” General Reading Layout</p> <table style="width: 100%; border-collapse: collapse;"> <tr> <td style="width: 15%;"></td> <td style="width: 15%;">MC</td> <td style="width: 15%;">1 & 9 = Self</td> </tr> <tr> <td></td> <td>#10</td> <td>2 = Livelihood</td> </tr> <tr> <td></td> <td>#3</td> <td>3 & 10 = Status In World</td> </tr> <tr> <td style="vertical-align: top;">Asc #9</td> <td>#2 #4</td> <td>4 = Home</td> </tr> <tr> <td>#1</td> <td>#13 #5 #11</td> <td>5 & 11 = Others</td> </tr> <tr> <td></td> <td>#8 #6</td> <td>6 = Health</td> </tr> <tr> <td></td> <td>#7</td> <td>7 & 12 = Spouse</td> </tr> <tr> <td></td> <td>#12</td> <td>8 = Death</td> </tr> <tr> <td></td> <td></td> <td>13 = Resolution</td> </tr> </table> <hr style="border-top: 1px dashed black;"/> <p style="text-align: center;">The “<u>Three Yes and No Questions</u>” Layout</p> <p style="text-align: center;">Ask 3 Questions Then Begin Again.</p> <p style="text-align: center;">Per Query: Shuffle, Cut, & Count Every 7th Card.</p> <p style="text-align: center;">Center Card Counts Double. Count + & - = Yes\No & Maybe</p> <table style="width: 100%; border-collapse: collapse;"> <tr> <td style="width: 15%;">#1</td> <td style="width: 15%;">#2</td> <td style="width: 15%;">#3</td> <td style="width: 15%;">#4</td> <td style="width: 15%;">#5</td> </tr> <tr> <td></td> <td></td> <td style="text-align: center;">--</td> <td></td> <td></td> </tr> <tr> <td>#1</td> <td>#2</td> <td>#3</td> <td>#4</td> <td>#5</td> </tr> <tr> <td></td> <td></td> <td style="text-align: center;">--</td> <td></td> <td></td> </tr> <tr> <td>#1</td> <td>#2</td> <td>#3</td> <td>#4</td> <td>#5</td> </tr> <tr> <td></td> <td></td> <td style="text-align: center;">--</td> <td></td> <td></td> </tr> </table> <hr style="border-top: 1px dashed black;"/> <p style="text-align: center;">The “<u>Past Present and Future</u>” Layout</p> <p style="text-align: center;">(“Of Any Case & Time Period”)</p> <p style="text-align: center;">#4 = Past, #11 = Present, #18 = Future</p> <p style="text-align: center;">Left 3 = Inner, Right 3 = Outer Manifestations (e.g. Past 5,6,7)</p> <table style="width: 100%; border-collapse: collapse;"> <tr> <td style="width: 15%;">#15</td> <td style="width: 15%;">#16</td> <td style="width: 15%;">#17</td> <td style="width: 15%;">#18</td> <td style="width: 15%;">#19</td> <td style="width: 15%;">#20</td> <td style="width: 15%;">#21</td> </tr> <tr> <td></td> <td></td> <td style="text-align: center;">---</td> <td></td> <td></td> <td></td> <td></td> </tr> <tr> <td>#8</td> <td>#9</td> <td>#10</td> <td>#11</td> <td>#12</td> <td>#13</td> <td>#14</td> </tr> <tr> <td></td> <td></td> <td style="text-align: center;">---</td> <td></td> <td></td> <td></td> <td></td> </tr> <tr> <td>#1</td> <td>#2</td> <td>#3</td> <td>#4</td> <td>#5</td> <td>#6</td> <td>#7</td> </tr> </table> <hr style="border-top: 1px dashed black;"/> <p style="text-align: center;">The “<u>Pentacle</u>” Layout</p> <table style="width: 100%; border-collapse: collapse;"> <tr> <td style="width: 15%;"></td> <td style="width: 15%;">#2</td> <td style="width: 15%;">#3</td> <td style="width: 15%;">#1 = Karma</td> </tr> <tr> <td></td> <td>#1</td> <td></td> <td>#4 = Physical</td> </tr> <tr> <td>#15</td> <td></td> <td>#5</td> <td>#7 = Soul</td> </tr> <tr> <td>#13</td> <td></td> <td>#4</td> <td>#10 = Spirit</td> </tr> <tr> <td>#14</td> <td></td> <td>#6</td> <td>#13 = Spiritual Evolution</td> </tr> <tr> <td></td> <td>#16</td> <td></td> <td>#2, 5, 8, 11, 14 = Inner Manifestations</td> </tr> <tr> <td>#11</td> <td></td> <td>#9</td> <td>#3, 6, 9, 12, 15 = Outer Manifestations (e.g. #3 = outer of Karma)</td> </tr> <tr> <td>#10</td> <td></td> <td>#7</td> <td>#16 = Resolution</td> </tr> <tr> <td>#12</td> <td></td> <td>#8</td> <td></td> </tr> </table>		MC	1 & 9 = Self		#10	2 = Livelihood		#3	3 & 10 = Status In World	Asc #9	#2 #4	4 = Home	#1	#13 #5 #11	5 & 11 = Others		#8 #6	6 = Health		#7	7 & 12 = Spouse		#12	8 = Death			13 = Resolution	#1	#2	#3	#4	#5			--			#1	#2	#3	#4	#5			--			#1	#2	#3	#4	#5			--			#15	#16	#17	#18	#19	#20	#21			---					#8	#9	#10	#11	#12	#13	#14			---					#1	#2	#3	#4	#5	#6	#7		#2	#3	#1 = Karma		#1		#4 = Physical	#15		#5	#7 = Soul	#13		#4	#10 = Spirit	#14		#6	#13 = Spiritual Evolution		#16		#2, 5, 8, 11, 14 = Inner Manifestations	#11		#9	#3, 6, 9, 12, 15 = Outer Manifestations (e.g. #3 = outer of Karma)	#10		#7	#16 = Resolution	#12		#8		<p style="text-align: center;">The “<u>Celtic Cross</u>” Layout.</p> <p style="text-align: center;">Pick # 1 & Save. Shuffle Deck.</p> <p style="text-align: center;">Stack # 2 on # 1 Crossed by # 3.</p> <p style="text-align: center;"># 1 = Query. 2 = Case. 3 = Situation.</p> <p style="text-align: center;">4 = Ideal. 5 = Solution. 6 = past.</p> <p style="text-align: center;">7 = Future. 8 = Self. 9 = Home.</p> <p style="text-align: center;">10 = Hopes & Fears. 11 = Outcome.</p> <table style="width: 100%; border-collapse: collapse;"> <tr> <td style="width: 15%;"></td> <td style="width: 15%;">#4</td> <td style="width: 15%;">#11</td> </tr> <tr> <td></td> <td>#1</td> <td>#10</td> </tr> <tr> <td></td> <td>#7</td> <td>2& #6</td> </tr> <tr> <td></td> <td>#3</td> <td>#9</td> </tr> <tr> <td></td> <td>#5</td> <td>#8</td> </tr> </table> <hr style="border-top: 1px dashed black;"/> <p style="text-align: center;">The “<u>Talking Tarot</u>” Layout</p> <p style="text-align: center;">Layout Right to Left. Write Message Left to Right</p> <p style="text-align: center;">in Station # Order. Read Left to Right as Letters Phonetically.</p> <p style="text-align: center;">Place a / Between 2 Vowels or Consonants In A Row.</p> <table style="width: 100%; border-collapse: collapse;"> <tr> <td style="width: 15%;"></td> <td style="width: 15%;">#13</td> <td style="width: 15%;">(2nd deck)</td> </tr> <tr> <td></td> <td>#12</td> <td>#11 #10 #9 #8</td> </tr> <tr> <td></td> <td>#7 #6</td> <td>#5 #4 #3 #2 #1</td> </tr> <tr> <td></td> <td>#7 #6</td> <td>#5 #4 #3 #2 #1</td> </tr> <tr> <td></td> <td>#12</td> <td>#11 #10 #9 #8</td> </tr> <tr> <td></td> <td>#13</td> <td>(1st deck)</td> </tr> </table> <p style="text-align: center;">Stop Card 1 or 2 = redo. Stop Card = End.</p> <p style="text-align: center;">Say Letter As In Trump Name?</p> <hr style="border-top: 1px dashed black;"/> <p style="text-align: center;">The “<u>Twelve House</u>” Layout</p> <p style="text-align: center;">Any Cycle Timed in 12ths</p> <table style="width: 100%; border-collapse: collapse;"> <tr> <td style="width: 15%;"></td> <td style="width: 15%;">#10</td> <td style="width: 15%;"></td> </tr> <tr> <td></td> <td>#11</td> <td>#9</td> </tr> <tr> <td></td> <td>#12</td> <td>#8</td> </tr> <tr> <td></td> <td>#1</td> <td>#13 #7</td> </tr> <tr> <td></td> <td>#2</td> <td>#6</td> </tr> <tr> <td></td> <td>#3</td> <td>#5</td> </tr> <tr> <td></td> <td>#4</td> <td></td> </tr> </table> <hr style="border-top: 1px dashed black;"/> <p style="text-align: center;">13 = Resolution</p> <hr style="border-top: 1px dashed black;"/> <p style="text-align: center;">The Stations are layed out as arrowheads. / \</p>		#4	#11		#1	#10		#7	2& #6		#3	#9		#5	#8		#13	(2nd deck)		#12	#11 #10 #9 #8		#7 #6	#5 #4 #3 #2 #1		#7 #6	#5 #4 #3 #2 #1		#12	#11 #10 #9 #8		#13	(1st deck)		#10			#11	#9		#12	#8		#1	#13 #7		#2	#6		#3	#5		#4	
	MC	1 & 9 = Self																																																																																																																																																																																					
	#10	2 = Livelihood																																																																																																																																																																																					
	#3	3 & 10 = Status In World																																																																																																																																																																																					
Asc #9	#2 #4	4 = Home																																																																																																																																																																																					
#1	#13 #5 #11	5 & 11 = Others																																																																																																																																																																																					
	#8 #6	6 = Health																																																																																																																																																																																					
	#7	7 & 12 = Spouse																																																																																																																																																																																					
	#12	8 = Death																																																																																																																																																																																					
		13 = Resolution																																																																																																																																																																																					
#1	#2	#3	#4	#5																																																																																																																																																																																			
		--																																																																																																																																																																																					
#1	#2	#3	#4	#5																																																																																																																																																																																			
		--																																																																																																																																																																																					
#1	#2	#3	#4	#5																																																																																																																																																																																			
		--																																																																																																																																																																																					
#15	#16	#17	#18	#19	#20	#21																																																																																																																																																																																	

#8	#9	#10	#11	#12	#13	#14																																																																																																																																																																																	

#1	#2	#3	#4	#5	#6	#7																																																																																																																																																																																	
	#2	#3	#1 = Karma																																																																																																																																																																																				
	#1		#4 = Physical																																																																																																																																																																																				
#15		#5	#7 = Soul																																																																																																																																																																																				
#13		#4	#10 = Spirit																																																																																																																																																																																				
#14		#6	#13 = Spiritual Evolution																																																																																																																																																																																				
	#16		#2, 5, 8, 11, 14 = Inner Manifestations																																																																																																																																																																																				
#11		#9	#3, 6, 9, 12, 15 = Outer Manifestations (e.g. #3 = outer of Karma)																																																																																																																																																																																				
#10		#7	#16 = Resolution																																																																																																																																																																																				
#12		#8																																																																																																																																																																																					
	#4	#11																																																																																																																																																																																					
	#1	#10																																																																																																																																																																																					
	#7	2& #6																																																																																																																																																																																					
	#3	#9																																																																																																																																																																																					
	#5	#8																																																																																																																																																																																					
	#13	(2nd deck)																																																																																																																																																																																					
	#12	#11 #10 #9 #8																																																																																																																																																																																					
	#7 #6	#5 #4 #3 #2 #1																																																																																																																																																																																					
	#7 #6	#5 #4 #3 #2 #1																																																																																																																																																																																					
	#12	#11 #10 #9 #8																																																																																																																																																																																					
	#13	(1st deck)																																																																																																																																																																																					
	#10																																																																																																																																																																																						
	#11	#9																																																																																																																																																																																					
	#12	#8																																																																																																																																																																																					
	#1	#13 #7																																																																																																																																																																																					
	#2	#6																																																																																																																																																																																					
	#3	#5																																																																																																																																																																																					
	#4																																																																																																																																																																																						

“Count Gramalkin Star=Card Delineation Cross-Reference”

“Reversed Card Technique”: Shuffle 7X, Left Hand cut 3 even piles. Reverse center pile & restack to 1 pile. Shuffle 7X, cut 3 piles & restack “as you will” to 1 pile. Reversed cards = lower self manifestation. Some decks switch card numbers. Sun= Spirit. Moon=Soul. Mercury= Intellect. Venus=Love. Mars=Sex. Jupiter=Win. Saturn=Loose. Uranus=Intuition. Neptune=Imagination. Pluto=Death. Sun & Moon Illuminate, Mercury Expresses, Jupiter Venus Uranus = Good+, Mars Saturn Neptune Pluto = Bad-, Especially in Transit/Current Events.

Fire	=	Wands	Noon	Weeks	Clubs	South	Spirit (Sun)
Earth	=	Pentacles	Midnight	Years	Diamonds	North	The Physical
Air	=	Swords	Dawn	Months	Spades	East	(Intellect Mercury)
Water	=	Cups	Sunset	Days	Hearts	West	Soul (Moon)

Aces	=	Element		Read A “Sign” As it’s Motivating Planet.
Knights	=	Element In Action.		Aries = Mars Leo = Sun Sag = Jupiter
*				Taurus = Venus Virgo = Merc Cap = Saturn
Cardinal Cross	=	Kings		Gemini = Merc Libra = Venus Aqu = Uranus
Fixed Cross	=	Queens		Cancer = Moon Scorp = Pluto Pisces = Neptune
Mutable Cross	=	Pages (Jacks)		

“Major Arcana”

Planet	Card Name	Card	Constellation	Card Name	Card
	& letter	#	& letter		#
Sun	= Sun = S	# XIX	Aries = O	= Emperor	# IV
Moon	= High Priestess = I	# II	Taurus = V	= Hierophant	# V
Mercury	= Magician = M	# I	Gemini = O	= Lovers	# VI
Venus	= Empress = E	# III	Cancer = CH	= Chariot	# VII
Mars	= Tower = O	# XVI	Leo = E	= Strength	# XI
Jupiter	= Wheel of Fortune = E	# X	Virgo = I	= Hermit	# IX
Saturn	= World = W	# XXI	Libra = U	= Justice	# VIII
Uranus	= Fool = A	# 0	Scorpio = Stop	= Death	# XIII
Neptune	= Hanged Man = Start Over	# XII	Sagittarius = T	= Temperance	# XIV
Pluto	= Judgement = Stop	# XX	Capricorn = Stop	= Devil	# XV
			Aquarius = ST	= Star	# XVII
			Pisces = O	= Moon	# XVIII

“Court Cards”

	Kings (Cd)		Queens (Fx)		Knights		Pages (Mu)
Wands	Aries = P		Leo = V&X		Fire = E		Sagittarius = Z Gramalkin®™©1970
Pentacles	Capricorn = L		Taurus = U&X		Earth = R		Virgo = Y v12-25.5
Swords	Libra = E		Aquarius = Y&C		Air = T		Gemini = A
Cups	Cancer = U		Scorpio = Y&C		Water = R		Pisces = U

“Minor Arcana”

	Wands		Pentacles		Swords		Cups
A)	Fire = B		Earth = I	(A)	Air = A		Water = E (A)
2)	Mars@Aries = I		Jupiter@Cap = O	2	Moon@Libra = I		Venus@Cancer = K (2)
3)	Sun@Aries = M		Mars@Cap = L	3	Saturn@Libra = Z		Mercury@Cancer = Y (3)
4)	Venus@Aries = J		Sun@Capricorn = F	4	Jupiter@Libra = U		Moon@Cancer = Q&H (4)
5)	Saturn@Leo = T		Mercury@Taurus = Z	5	Venus@Aqu = TH		Mars@Scorpio = A (5)
6)	Jupiter@Leo = O		Moon@Taurus = E	6	Mercury@Aqu = G		Sun@Scorpio = O (6)
7)	Mars@Leo = Y		Saturn@Taurus = A	7	Moon@Aquarius = V		Venus@Scorpio = S (7)
8)	Mercury@Sag = U		Sun@Virgo = D	8	Jupiter@Gemini = N		Saturn@Pisces = W (8)
9)	Moon@Sag = L		Venus@Virgo = I	9	Mars@Gemini = Y		Jupiter@Pisces = L (9)
10)	Saturn@Sag = A		Mercury@Virgo = SH	10	Sun@Gemini = O		Mars@Pisces = D (10)

Wands | Pentacles | Swords | Cups ***