

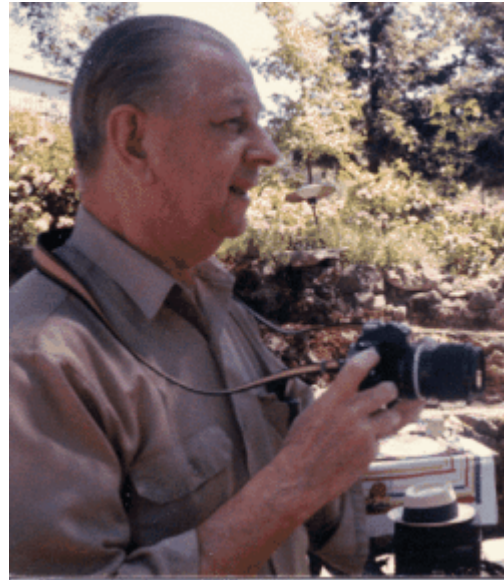
**Count**  
**GRAMALKIN**

★ ★ ★ ★ ★ ★ ★ ★  
**SAN FRANCISCO**  
**SCHOOL**  
**of**  
**SIDEREAL**  
**ASTROLOGY**  
**TECHNIQUE**

★ ★ ★ ★ ★ ★ ★ ★

<http://www.gramalkin.com>

\*\*\*\*\*



Cyril Fagan (1896-1970)    Reverend John Mazurek (1919-2003)

By Fagan out of Mazurek



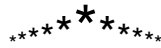
\*\*

“The San Francisco School of Sidereal Astrology Technique”

By

# Count Gramalkin

v4-24.12



# “Sidereal Horoscopes”

By

Count Gramalkin

Western Sidereal Astrology Zodiacal Fixed Zodiac Professional Astrologer

Spiritual Evolution Self Realization Truth Seeker Disciple - Truth Changes Not

San Francisco School of Sidereal Astrology Intrinsic Values of the Planets Technique of Delineation

<http://www.countgramalkin.com> 1 877 322 7238 Toll Free Order Numger +Fax CountGramalkin@CountGramalkin.Com

## “The Art of Accurate Delineation”

Is The Individual, and the Collective Intermingling of the Intrinsic Astrological Variables Count +&- Use Applicable Adjectives  
The Star Science essence of perceiving, reading, delineating, the ebb and flow ratio proportions of the interaction stack up distribution  
between the Intrinsic Astrological Variables - The Astrology PHD the Piled Higher and Deeper. “Count Gramalkin™ ©1970 v4-24.12”

\*\*

First State Astrological Case Then Delineate

Example: The Planet = Subject. Constellation and Station = Application.

Sun in Aries. Read Sun = What; Read Aries (Mars) = How; On Ascendant Station = Where = You Are.

The Intrinsic Values Act Individually and Collectively.

Take the Intrinsic Value of one planet. It exists independently like it was the only one there. The Intrinsic Value of the other planet exists independently also. Due to the Law of Polarity (Yin Yang, + -) All the Intrinsic Values have higher =+ and lower self =- qualities.

Intermingle The Intrinsic Values They Also Exist Collectively

E.g. Jupiter = Happiness/Overindulgence. Venus = Love/Overindulgence. Jupiter Aspect Venus = Happiness/Love Double the Overindulgence.

Venus (Akin to Taurus & Libra) Psychological Positive = Love; Peace; Harmony; Beauty; Music; Musical: Art; Artistic; Sensuous; Charming; Femininity; Love and the capacity for love; Love nature and artistic temperament; Romantic Heart.

Jupiter (Akin to Sagittarius) Psychological Positive = Philosophical; Cheerful; Happy; Joy; Rejoice; Gay (Joyous); Optimistic; Hi-minded; Honorable; Professional; Religious; Nature Loving; Law-abiding; Aristocratic; Just; Aspiring; Opulent; Benevolent; Congenial.

Venus Jupiter Aspect Psychological Positive = Philosophical; Love; Cheerful; Peace; Happy; Harmony; Joy; Beauty; Rejoice; Musical: Gay (joyous); Artistic; Optimistic; Sensuous; Hi-minded; Charming; Honorable; Femininity; Professional; Love and the capacity for love; Religious; Love nature and artistic temperament; Nature Loving; Romantic Heart; Law-abiding; Aristocratic; Just; Aspiring; Opulent; Benevolent; Congenial. Read the ebb and flow ratio proportion interaction distribution stack up between the Intrinsic Astrological Variables.

To See How The Intrinsic Values Will Manifest.

Repeat the “Individually and Collectively Intermingling” Process With Their “Station and Situation.”

Example: Venus =Love; Peace; Harmony; Beauty; Music; Sensuous; Charming / Lazy Overindulgence on Station Nadir = Spouse is. On the Midheaven station = Career is.

In Taurus gives a nice Artistic Love foundation.

In the Saturn Lunar Mansion of Taurus = Happiness, Love, Artistic, add Stubborn, Frustrated and Denied, Patient and Practical heavier on the Overindulgence eTc.

Square Uranus the Intuition aids, ad’s excitement eTc eTc eTc.

Count Score On +&- To Read Higher/Lower Self, Yes/No/Maybe eTc.

Sun & Moon are lights & illuminate whatever is there; Mercury is neutral and expresses whatever is there; Jupiter, Venus, Uranus, Superior Angles = good +; Mars, Saturn, Neptune, Pluto, Inferior Angles = bad - = Most Common Manifestation Especially In Transit.

To delineate in any given sphere Use the Intrinsic Adjectives common to that sphere.

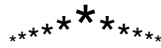
E.g. Venus - Psychologically = Love & Peace. Mundanely = Food & Clothes. Medically = Kidney eTc! ETC!!

## The Art of Synthesis

To Synthesize a horoscope chart first look at the Sun taken by it’s self, then Moon by it’s self (Angular? Sign; Watch; House; Arabic Lunar Mansion), the Ascendant then Midheaven by their self (four equal quarters). Then the Angles (which solar cross/split cross eTc.), the most angular planet and its situation, the next most angular situation. There are usually two or three basic “the next most Angular situations.”

## Manifesting

When there is an orange tail sticking around the corner and one grabs the tail rather than having a tail one actually has the entire Tiger. So it is with the “Intrinsic Values of the Planets.” When one identifies having hold of any part of an Intrinsic Value one actually has the entire planet (or Sign) by the tail. When one is happy one has Jupiter by the tail and therefore all of the Jupiter qualities good and bad. The idea is to consciously project the “higher self” or positive qualities of the Intrinsic Value of case rather than “lower self-essence dominated reacting” with the lower self-qualities. Read the Intrinsic Value of the planet in your notes and send out the + side. Also read the “Satsang”, “Self Realization” and “Daimoku” articles on CountGramalkin.Com and it will help you cope with all that reality nonsense. Be your HIGHER self.



# “Sidereal Horoscopes”

By

Count Gramalkin



Western Sidereal Astrology Zodiacal Fixed Zodiac Professional Astrologer

Spiritual Evolution Self Realization Truth Seeker Disciple - Truth Changes Not

San Francisco School of Sidereal Astrology Intrinsic Values of the Planets Technique of Delineation

<http://www.countgramalkin.com> 1 877 322 7238 Toll Free Order Numger +Fax CountGramalkin@CountGramalkin.Com



Reverend Professor John Mazurek

San Francisco School of Sidereal Astrology Director

"Planetary Notes"



The angles symbolize the periphery of the fully awakened consciousness and indicate the lines of demarcation between the subjective and objective worlds. In particular the fixed stars that rise at the moment of birth, modified by the constellation than holds the Sun and the Moon, and by the influences of the planets that are in powerful configuration with the rising stars....these describe the signature of the physical body, will power, with its innate hereditary traits, but under no circumstances can the ascendant describe one's mannerism, moods and habitual and often and often unconscious behavior. Editors note: In his later years long after this was written Mazurek used to say the rising sign acts akin to a second moon and colors the mind, Count Gramalkin.



One's personal idiosyncrasies, the way on gesticulates, talks, walks, laughs, cries, eats and sleeps, the pattern of one's appetites and the state of one's health are signified by the Moon's configuration with the planets and the fixed stars.



One's personal idiosyncrasies, the way on gesticulates, talks, walks, laughs, cries, eats and sleeps, the pattern of one's appetites and the state of one's health are signified by the Moon's configuration with the planets and the fixed stars.



The Sun symbolizes energy or life, which physiologically expresses itself as vitality, and psychologically as desire....which in its momentary frustration gives rise to self-consciousness, which in turn solidifies into the Ego or Self. Hence the core of the individual, what he is at heart, his proclivities and character, and in short, his very being, signified by the Sun's configuration with the planets and fixed stars.



Therefore the natal Sun symbolizes all isolation and self-centered activities, the quest for supremacy, recognition, honor and fame, and the thirst for glory and renown. Should the Sun be in the foreground configured with the benefics, there will be garnered a full measure....but should it be located in the remote background and configured with malefics or even unaspected, the native will be without ambition and, with some exceptions, his name will not be inscribed in the Hall of Fame.



Should the Sun be on or in the angles, but afflicted by the malefics, the native will hold the headline's of the world's press for a while, gut die in oblivion, if not branded and execrated. When the Moon is in conjunction or opposition or angular aspect to the Sun, the manner tends to be lordly and condescending.



In a large family of boys born in humble circumstances, only one had the Sun in conjunction with Jupiter. In his case the conjunction fell in the 10th house. By his own diligent efforts, he rose to be one of the most successful and respected members of his native city; while his brothers remained as they were born, little better than paupers.



Moon

If the student of Astrology is at all aware of the thoughts that uninvited flit across his mind, he may notice that the Moon is transiting across his natal Sun, and he tends to indulge in idle daydreams wherein he figures as the hero in some exciting adventure or melodrama.



Progressions of the Moon

As a general rule, progressions and transits or the Moon to a planet signifies the emotional actions of the native....what he does to others. On the other hand, progressions and transits of the planets to the Moon....signify the reactions or the native to the actions taking place in one's environment. That is, reacting to what other people do to the native.



## Mercury

Note: Mercury is the planet of self-expression. It symbolizes the processes of verbalization, writing and communication, and the nature and manner of one's conversation can be gleaned from the planet Mercury and its configuration with other planets.

Mercury the planet of thieves and mercenaries, When found in the foreground of charts, awakens and activates the intellectual activities of the native. Causes the native to impart information to others such as through teaching, selling, lectures, instruction, writing, publishing or debating. Generally speaking, Mercury signifies one's mechanical and mathematical ability and capacity to absorb and impart information. When one's Mercury is conjunct or opposite to the Sun of someone else, the Mercury native will impart ideas that influence the Sun native.

## Venus

Venus is the planet of Peace, and Love and Venus symbolizes the "romantic heart" of the native, the love he feels and gives another. Venus is "in love" with any planet with which it is configured at birth not excluding malefics. The types of humanity which win the affections of the native may be deduced by the constellation occupied by Venus at birth; that is, in the birth horoscope chart. For examples, if Venus is found in Aries, affection may be lavished on those who wield power. Venus in Sagittarius has affection for clergymen, doctors and the titled. Venus in Aquarius, the interest would be for those who express a liking for exotic, or out of the ordinary subjects.

The Venus constellation often describes the fetish or the frustrated. When Venus is in the foreground or in elevation in the birth chart, the native is dominated by their love for others, often to the point that nothing else matters, so that love is the motive for one's existence. Known as "Venerable" Venus may, in advanced years and in a position to do so, become noted for charity. In youth, the native is a Casanova. Venus in a subordinate place in the birth chart will tend to delay or deny love and marriage of the native.

Venus in a subordinate place in the birth chart will tend to delay or deny love and marriage of the native.

## Mars

Unpolished, rough, uncouth, noisy and loud-mouthed, prone to swearing, wiry, muscular and spoiling for a fight...hotheaded, impetuous, exalting in conflict. Mars or Aries is reckless, brave, easily succumbing to temptation, delighting in sport, machinery and mechanics, daring, often untidy. These are the characteristics of those born with Mars in the foreground. Mars is the Killer, the destroyer...who destroys for the pleasure of it. The exercise of power gives one immense gratification, but there is nothing essentially evil or vindictive about these Mars characters or personalities.

## Jupiter

Jupiter bestows quality and richness. This, the greatest of the planets, ennobles the influences of every planet it confabulates, preserving, healing, and protecting. In every sense, it represents the Good. It represents the best of everything, clothes, schools, social life, in short, The Good Life. Those whose monies are derived from land, real estate, wills, legacies, bequests, interest on money held in trust...have Jupiter configured with Saturn Nataly. Jupiter configured with Uranus amasses money through speculation. The world of Show Business, the entertainer finds, will bring prosperity when Jupiter and Neptune are configured in the natal chart; but the money is soon dissipated. Jupiter configured with Pluto denotes ill-gotten money.

## Saturn

This is the planet of conformity, inferiority, orthodoxy, economy, complexities, fear and hate. Configured with the Lights means all of the preceding, but also prudence...a talent for organization...and patience. It denotes longevity, Father Time, the dead, and land.

## Uranus

The planet always found in the vanguard of advanced movements, revolution, the discarding of the old or outmoded. This is the planet of intuition, the inventor and scientist, and typifies the computer age. True Uranians are inspired geniuses of humanity, although in politics such people seem dictatorial simply because most of their fellow-men are too slow witted to keep up with them.

## Neptune

The planet Neptune causes confusion so that the native becomes completely flurried. Neptune is the cause of an indefinable sense of inadequacy, that makes the native avoid responsibility and desire to escape into a secluded and leisurely world or congeniality a world of one's own choosing or making...frequently through alcohol or drugs. Art, music, fiction and science are the forte of Neptune.

## Pluto

Pluto is a solitary worker, a poor mixer, and the eternal lone wolf. Sooner or later he breaks from his home, putting behind him all it represents in tradition and orthodoxy, or respectability, for the Pluto native is the eternal rebel. Shyness, crises, accidents, bickering, death, miracles and diffidence, remoteness, austerity and a sardonic smile are characteristics of this planet.

\*\*\*

\*\*\*

## INTERPERSONAL RELATIONSHIPS

\*\*

The study of interpersonal relationships involves the comparison of the planets and luminaries in one person's horoscope chart with the planets and luminaries in another's chart. Comparing the zodiacal celestial longitude positions does this, primarily by conjunction or oppositions with the planets of another. It is our contention that with no planetary interchange, there will not be a significant relationship, if in fact any relationship at all.

\*

We have listed the nature of the various relationships which have been ascertained through considerable testing and analysis.

\*

Carl Jung, the noted psychoanalyst, did an inter-personal study involving just such chart comparisons as we have mentioned. In his book "The Structure and Dynamics of the Psyche" he relates his study which involves the comparisons of the horoscopes of 483 married couples. The horoscopes were then compared to ascertain what planetary inter-changes were present in the charts of each of the married couples.

\*

While this study was more quantitative than qualitative in nature, it did give succeeding researchers a starting point for interpersonal analysis.

\*

Cyril Fagan, the father of modern day sidereal astrology and Thomas R. Stanton, of the Sidereal astrology school in Los Angeles, among others, have done considerable work on this field.

\*

We suggest that you test the effectiveness of the combinations for yourself, as there is no substitute for actual experience.

\*

By constellation via the five major aspects conjunction, opposition, square, trine, sextile you receive what planets are touched off in your chart. You give what planets are touched off in their chart. The Sun always gives you get what planets in your chart their Sun aspects. Planets give to angles; their planet on your angle equals what they give you

\*

Sun to Sun = Good for business or friendship but not for romance.

\*

Moon to Moon = Good for happy, lasting relationship. The emotions are in harmony. A good natural rapport exists.

\*

Sun to Moon = Good for marriage for the Sun will "love" the Moon and the Moon reciprocates. The Sun leads and or "rules" and the Moon will usually go along with the Sun's wishes. This is an excellent combination for emotional rapport or ease relationship with one another. You feel comfortable with each other and find companionship very easy and unrestrained. This is a type of relationship one which one can sit together and be comfortable without feeling any strain in the relationship. With many people, you feel you have to do something of keep things going.

\*

Sun or Moon to Mercury = This is not a romantic combination, there is an ability to communicate with each other.

\*

Sun or Moon to Venus = This is a romantic aspect. Venus in a chart relates to our capacity to love. Therefore, the Sun or Moon turns this on.

\*

Venus will be devoted to the Sun, being "in love" with the appearance, the spirit and the outlook of life of the Sun. Venus will love the Moon's behavior and bearing. This aspect is good for an enduring romance, understanding and companionship.

\*

Sun or Moon to Mars = A good configuration for lovers but not always a good combination for a lasting tie. There is a strong attraction though it relates primarily to the passions.

\*

With the Sun and Mars, each tries to dominate the other and Mars may at times irritate the Sun though the Sun can handle Mars.

\*

The Moon is no match for Mars, Mars teases and tantalizes the Moon and loves to arouse the Moon's temper. With only this aspect, the "honeymoon" may soon be over and arguments ensue, for passion can easily turn to hatred.

\*

Sun or Moon to Jupiter = Jupiter will want to give to the Sun or Moon. It is good an "all around existence" together, though not a romantic aspect.

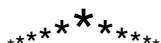
\*

Sun or Moon to Saturn = This combination is not common in marriage or friendship and is rarely a happy one. Saturn tends to constrict or limit the luminaries and "clings" to them for security. The Sun feels "trapped" by Saturn.

\*

Editor Note: Zero notes from this piece could be found about Uranus, Neptune or Pluto. However the most common manifestation of Uranus is excite, Neptune is confusion and Pluto crises.

\*\*\*



\*\*\*

## “Sidereal Horoscopes”

By  
Count Gramalkin

Western Sidereal Astrology Zodiacal Fixed Zodiac Professional Astrologer - Tarot  
Spiritual Evolution Self Realization Truth Seeker Disciple - The Truth Changes Not

San Francisco School of Sidereal Astrology Intrinsic Values of the Planets Technique of Delineation

Read the ebb and flow ratio proportions of the interaction stack up distribution between the Intrinsic Astrological Variables

Due to the Law of Polarity Yin Yang+ - Planets Have Higher / Lower Self Qualities Count Score On +&- To Read Higher/Lower Self, Yes/No/Maybe e'l.c.

Most Common Manifestation=(mcm) Especially In Transit = Sun & Moon are lights & illuminate whatever is there; Mercury is neutral and expresses whatever is there; Jupiter, Venus, Uranus, Superior Angles = benefic good +; Mars, Saturn, Neptune, Pluto, Inferior Angles = Malefic bad -.

<http://www.countgramalkin.com> - 1 877 322 7238 Toll Free Order Number + Fax - CountGramalkin@CountGramalkin.Com

*“San Francisco School of Sidereal Astrology Intrinsic Values of the Planets Delineation v4-24.12”*

### “Sun”

v2-6.12

1) Psychological:

(Akin to Leo)

Positive:

Spirit; Character; Consciousness; Awareness; Energy; Vitality; Life; Life Force; Supremacy; Basic Intelligence; Seat of Intelligence; Recognition and Honors; Dignity; Health; Self Promotion; Authority; Progress; Individuality; Magnanimity; Generosity; Common Sense; Self; The God-Head part of our self; Zenith of Spiritual Qualities (e.g. Illumination, Seership). “Count Gramalkin™ ©1970”

Negative:

Egotistical=mcm; Conceited; Tyrannical; Domineering and Opinionated.

\*

2) Physical: Energy and Drive; Radiation of Life Force; The body (at this level the body is quite often surrounding the consciousness); Lean Physique; Right Eye (Spirit Window), Nostril, hand; Left-Brain; Masculine; Positive; Heat. (Leo = Shin; Ankle; Eyes I.E. Sight).

3) Medical: Eyes; Cell Salt? = Magnesia Phosphorica (M.P.), Gold.

4) Mundane:

Kings; Men; Presidents; Emperors; Commanders; Centers of Power; High Places; Executive Ability, You Personally; Religious Zeal; The Wife (in the husbands chart); Banks; Bankers; Yellow, Orange, White?, Gold (color and metal); Ruby; Amber; Father; God (masculine); Masters, Guru, Godhead; God of War; Most important planet in the “Natal Chart”; “Giver of Life”, “Taker of Death”; The heart of a person or matter; Illuminates whatever aspected to; How your friends or family know you; Acts of the self; #4 by night? By day #1. During deep sleep without dreams one is entranced in Spirit. Look with both of your eyes into the right eye see the window to the spirit looking into the left eye is the window to the soul.

\*\*\*

### “Moon”

v2-6.12

1) Psychological:

(Akin to “Cancer”)

Positive:

“Quantity and Quality” of the Mind; Soul; Emotions; Feelings; Personality; Psychic; Carnivorous Appetite; Astral, Astral Plane, Astral body; Sensitivity; Protectiveness; Compliance; Flexibility; Love of Home; The Servant or Service.

Negative:

Egotistical=mcm; Unstable; Petty; Immature; Frivolous, Changeable; Vacillating; Deluded; Clings too past.

\*

2) Physical: Mind? Left Eye (Soul Window), Nostril, hand; Right-Brain; Feminine. (Cancer Knees).

3) Medical: Mind; Knees; Convulsions; Cell Salt? = Calcarea Phosphorica (C.P.) Silver.

4) Mundane:

Civil Service; Social Workers; Groups; Mobs; Crowds; Followers; Mothers; The Mother Church; The Husband (in the wife’s chart); Response to others acts; The Sea; Liquids; Negative; White, Silver (color, metal, & cell salt); Pearls; #7 by night? By day #2; Feminine; During sleep with dreams one is entranced in Soul. Cut hair waxing = grow fast and full, Waning grow slow and thin.

\*\*\*

\*\*\*

\*\*

\*

## “Mercury”

v5-15.11

1) Psychological: (Akin to “Gemini” & “Virgo”)

Positive:

Intellect, Intellectual Activity; Educational Capacity; Logic; Acquisition; Adaptability; Dexterity; Youthfulness; Conversation; Mathematics.

Negative:

Autoreact / talk=mcm; Restlessness; The Wanderer; Nervousness; Dishonesty; Forgetfulness; Lack of concentration; Over-talkative; Prone to react with pre-conceived opinion; Intellect is different than true intelligence (Sun). Mercury may be able to remember and quote data however often has a shallow superficial understanding of the “Big Picture.”

\*

2) Physical: Rules Lungs; Larynx; Bronchial Tubes; Hearing; Arms; shoulders and hands; Mouth. (Gemini = Eyes; Lungs; Nerves?; Virgo = Feet; Emerald).

3) Medical: Speech Defects; TB; Pneumonia; Cell Salt? = Kali Muriaticum (K.M.) (Gemini?), Kali Sulphuricum (K.S.) (Virgo?), Quicksilver, Mercury. “Count Gramalkin™ ©1970 <http://www.siderealastrology.net>”

Mundane:

Job; Schools and places of learning; Communication; Media; Telephone; Teletype; Mental Telepathy; Emerald; Green; Amethyst; Quartz Crystal; Travel; Talk; Hear; Teach; Study; Learn; Read/Write; Business; Selling; Salesmen; #5; How we interpret sensory input/output; Known to live by wits; Talks about what aspected to; The planet of thieves and mercenaries; Mercury is the planet of self-expression. It symbolizes the processes of verbalization, writing and communication, and the nature and manner of ones conversation can be gleaned from the planet Mercury and its configuration with other planets. When found in the foreground of charts, awakens and activities the intellectual activities of the native. Causes the native to impart information to others such as through lectures, instruction, writing, publishing or debating. Generally speaking, Mercury signifies one’s mechanical (?) and mathematical ability and capacity to absorb and impart information. When ones Mercury is conjunct or opposite to the Sun of someone else, the Mercury native will impart ideas that influence the Sun native.

\*\*\*

## “Venus”

v5-15.11

1) Psychological: (Akin to “Taurus & Libra”)

Positive:

Love; Peace; Harmony; Beauty; Musical: Artistic; Sensuous; Charming; Femininity; Love and the capacity for love. Love nature and artistic temperament; Romantic Heart.

Negative:

Vain; Selfish; Lazy; Overindulgent=mcm; Obese; Vulgar; Inconstant; Party Animal.

\*

2) Physical: Throat; Thyroid; Kidneys. (Taurus = Pallace / Sex Organs; Libra = Head; Face).

3) Medical: Cell Salt? = Natrum Phosphoricum (N.P.) (Libra?), Natrum Sulphuricum (N.S.) (Taurus?), Copper.

4) Mundane:

Divine Protection; Tolerated; Finery; Shoes; Food; Clothes; Jewelry; Diamonds; Poetry; Entertainment; Friends; Music; Graciousness; Lyricism; Desirability; Femininity; Attractive; Beautiful; Gifts; Wealth; Blue; Women; The Beloved; Theater, Opera; Melody and Song; Social Clubs; Beauty Salons, Sweets; Spices; Perfumes; Copper; #6. Art and Artistry; The art world; Centers of fine art; Art Galleries; Babies and small children; Loves whatever it is aspected to. The planet of peace and love. Venus symbolizes the “Romantic heart” the love one feels and gives another. Venus is “in love” with any planet with which it is configured at birth, not excluding the malefics. The type of humanity which wins the affections of the native may be deduced by the constellation occupied by Venus at birth that is in the Natal birth chart. For example, if Venus is found in Aries, affection may be lavished on those who wield power. Venus in Sagittarius, affection for clergymen, doctors and the titled. Venus in Aquarius, the interest would be for those who expresses a liking for exotic or out-of-the-ordinary subjects. The Venus constellation often describes the fetish of the frustrated. When Venus is in the foreground or in elevation in the birth chart, the native is dominated by his love for others, often to the point that nothing else matters, so that love is the motive for one’s existence. Known as “venerable”, Venus may, in advanced years and in a position to do so, become noted for charity. In youth the native is a Casanova. Venus in a subordinate place in the birth chart will tend to delay or deny love and marriage for the native. “Count Gramalkin™ ©1970

<http://www.loveadvice.biz>”

\*\*\*

\*\*\*

\*\*

\*

## “Mars”

v5-15.11

### 1) Psychological:

(Akin to “Aries”)

Positive:

Brave; Heroic; Courageous; Competitive; Pioneering; Executive Go-getter; Leader; Political; Action; Adventure; Spontaneous; Passionate; Sex.

Negative:

Impatient / Impulsive=mcm; Restless; Temperamental; Irritable; Headstrong; Foolhardy; Reckless; Wild; Vicious; Violent; Stress; Strife; Argumentative; Destructive; Bad-tempered or Quick-tempered; Aggressive; Brutal.

\*

2) Physical: Genitalia; Muscles; Red Corpuscles. (Aries = Buttocks; Lumbar Region; Kidneys; Ovaries / Womb?).

3) Medical: Cuts; Wounds; Operations; Fevers; Inflammation; Anemia; Flu; Headaches, Tension (?); Cell Salt? = Kali Phosphoricum (K.P.) (Aries), Can be Calcarea Sulphurica (K.S.), Iron, Iodine. Count Gramalkin®™©1970 <http://www.solunars.info>”

4) Mundane:

Sex; Machinery and Mechanics; Motors; Motor Vehicles; Disturbances; Explosions; Thunderstorms; Riots; Wars; Warrior; Coral; Iron; Red; Unpolished; Rough; Uncouth; Noisy and Loud-mouthed; Often Untidy; Prone to Swearing; Wiry; Hot-headed; Impetuous; Reckless; Daring; Brave; #9; A man in the prime of life; Muscular and spoiling for a fight; Delighting in sport; Exalting In conflict; Easily succumbing to temptation. These are the characteristics of those born with Mars in the foreground. Mars is the killer, the destroyer -- who destroys for the pleasure of it. The exercise of power gives one immense gratification, but there is nothing essentially evil or vindictive about Mars’s characters or personalities.

\*\*\*

\*\*\*

\*\*

\*

## “Jupiter”

v5-15.11

### 1) Psychological:

(Akin to “Sagittarius”)

Positive:

Philosophical; Cheerful; Happy; Joy; Rejoice; Gay (Joyous); Optimistic; Hi-minded; Honorable; Professional; Religious; Nature Loving; Law-abiding; Aristocratic; Just; Aspiring; Opulent; Benevolent; Congenial.

Negative:

Overindulgent=mcm; Extravagant; Ostentatious; Braggart; Status Conscious; Status Seeker; Social Climber; False Loyalties; Incompletion. “Count Gramalkin™©1970 <http://www.solunar.info>”

\*

2) Physical: Wiry; Zealous; Fiery; Positive Acting. (Sagittarius = Arms; Hands Chest; Shoulders; Lungs Throat; Spine; Back; Thighs?).

3) Medical: Liver; Buckteeth; Sternum; Cell Salt? = Silica (S.); Tin.

4) Mundane:

Prosperity; Philosophy; Wealth; Money; Success; Win; Medicine; Healing; Nature; Spiritual Matters; Insurance Companies; Topaz; Purple; Turquoise; Religion; Religious Societies; Courts of Justice; Legal Matters; Government; Law; #3. Professionals - Doctors, Lawyers, Judges, Priests, Astrologers (Astrologers also have a lot of Mercury). Jupiter bestows quality and richness. This the greatest of the planets, ennoble the influences of every planet it configures preserving, healing and protecting. In every sense it represents the good. It represents the best of everything -- clothes, schools, social life -- in short, the “Good Life.” Those whose moneys are derived from land, real estate, wills, legacies, bequests, interest on money held in trust, have Jupiter configured with Saturn Nataly. Jupiter configured with Uranus amasses money through speculation. The world of show business, the entertainer fields will bring prosperity when Jupiter and Neptune are well configured in the natal chart, but the money is easily dissipated. Jupiter configured with Pluto denotes ill-gotten money.

\*

\*

\*

\*

\*\*\*

\*\*\*

\*\*

\*

“Saturn”

v5-15.11

\*

1) Psychological: (Akin to “Capricorn”)

Positive:

Practical, Dependable; Stable; Patient; Faithful; Realistic; Organized; Planning; Self-disciplined; Stern; Exacting; Hard-working; Just; Serious; Severe (= - or + ?); Cautious; Diplomatic; Economical; Persistent; determined; Long-suffering.

\*

Negative:

Stupid / Mistakes=mcm; Sad; Hate; Jealous; Fear; Doubt; Skeptic; Envy; Paranoid; Delay; Denial; Hassle; Restriction; Limitation; Selfish; Non-productive; Depression; Suspicious; Cruel; Bummer; Dictatorial; Slave-driving; Cheap; Miserly; Grim; Brooding; Melancholy; Stern; Tired; Exhausted; Inhibited.

\*

2) Physical: Bony structure of the body; Teeth; Skin; Under-nourishment; Thin. (Capricorn = Breast / Chest).

3) Medical: Rheumatism; Bruises; Arthritis; Bone Injuries; Cell Salt? = Calcareo Phosphorica (C.P.) Lead.

4) Mundane:

Black; Sapphire; Lead; Obsidian; Onyx; Delay; Denial; Hassle; Restriction, Limitation and Loss; Mines; Work-houses; Laborers; Slaves; Farmers; Real Estate; Mountains and Rocks; Earthquakes; Old Age; Old Man, Grandfather; Father Time and Time; #8; Desolate or barren places or land; This is the planet of conformity, complexities, inferiority, orthodoxy, economy, fear and hate. One with a lot of negative Saturn influence will make a lot of stupid mistakes. Configured with the Lights means all of the preceding but also prudence, a talent for organization and patience. It denotes longevity and the dead. “Count Gramalkin™ ©1970 <http://www.siderealzodiac.info>”

\*\*\*

\*\*

\*

“Uranus”

v5-15.11

\*

1) Psychological: (Akin to “Aquarius”)

Positive:

Intuition, Excite / Excitement=mcm; Originality; Invention; Ingenious; Quick Wit; Unconventionality; Altruism; Humanitarian; Science; Instinct; Enlightenment (?); Thrills; Ahead of the times; Exotic.

\*

Negative:

Eccentric; Erratic; Extremist; Unpredictable; Strange; Spasmodic; Obstinacy; Obsessive; Stimulant/Thrill Addict; Shock; Suicidal.

\*

2) Physical: Nervous System. (Aquarius = Hart; Nervous System; Veins).

3) Medical: Cell Salt? = Natrum Mariaticum (N.S.) Radium, Uranium.

4) Mundane:

Change; Revolutions; Political Upheavals; Suicide/Suicidal especially when confused (with Neptune); Scientific Research; Gadgets; Electronics; Electrical Inventions; Electricity; TV; Motor Vehicles; Motors (a gadget); Plaids, and Changeable Colors; Opal; Uranium; Late, Late, Late; Shock; In Shock; #4. Sudden fast exciting change; New Experiences; Doors you didn't know were there open; Previously beyond grasp comes; The planet always found in the vanguard of advanced movements, revolution, the discarding of the old and outmoded. This is the planet of the inventor and scientist, and typifies the computer age. True Uranians are inspired geniuses of humanity, although in politics such people seem dictatorial simply because most of their fellow men are too slow to keep up with them.

\*

\*

\*

\*

\*

\*

\*\*

\*\*\*

\*\*\*

\*

“Neptune”

v5-15.11

1) Psychological: (Akin to “Pisces”)

Positive:

Imagination; Fantasy; Idealist; Theatrical; Pretension (+ / - ?); Dramatic; Sensitive; Absorption; Clever. Drawn to Mysticism, Musical, Poetic; Fascinated with Spirituality.

Negative:

Confusion / Escapism=mcm; Hysterical; Guilt; Worry; Anxious; Grief; Gullible; Naive; Unrealistic; Day-dreamers; Fraud; Schemers / Plotters (+ / - ?); Deceit; Delusion; Alcoholic Drug Addict; Supersensitive; Resignation; Quitter; Mistake the apparent for the real (the “Cardinal Sin of Mankind”). “Count Gramalkin™ ©1970

\*

2) Physical: Large protruding eyes (women); Bushy Eyebrows (men); Tend too be stout. (Pisces = Abdomen; Navel; Digestive Tract).

3) Medical: Cell Salt? = Ferrum Phosphoricum (F.P.), Zinc. <http://www.stamanpress.com>”

4) Mundane:

Idealism (= -or+?); Cinema; Fiction; Thespian; Actors; Movies; Plays; Dramas; Confidence Rackets; Schemes; Scams; Photography; Gases; Jade; All stimulants alcohol’s and other drugs; A sucker and a trickster (can sell you the Golden Gate Bridge yet will buy it from you); # 7. The planet Neptune causes confusion, so that the native becomes completely flurried. The most common manifestation of Neptune is confusion. The most common confusion is escapism. The situation or someone is causing my experience. E.g. “You make me mad.” Neptune is the cause of an indefinable sense of inadequacy that makes the native avoid responsibility and desire to escape into a secluded and leisurely world of congeniality, a world of one’s own choosing or making -- frequently through stimulants alcohol and other drugs, a fascination with Art, Music and Science are the forte of Neptune? Successful actors = a positive Jupiter Neptune configuration.

\*\*\*

\*

“Pluto”

v5-15.11

1) Psychological: (Akin to “Scorpio”)

Positive:

Transition; Change; Miracles; Sensitivity; Authority in speech.

Negative:

Crises / Chaos;=mcm; In a perpetual state of crisis & chaos; Bitch; Critical; Argumentative; Needle, Bicker, Bitch, Bitch, Bitch; Shy; Aloof; Lonely, A Loner; Militant; Disruption; Destruction; Easily Embarrassed; Embarrassment; Timidity; Withdrawal; Hyper-critical; Pugnacious; Sneering Attitude; Sardonic Smile; Quarrelsome; Likes to “Needle” people; Causes Upheaval; Starts arguments “just for the heck of it.” Takes things personally as an affront, twists things around to apply to self personally as an affront. Puts nose where it doesn’t belong. Tries to save the world when cannot save self. Criticizes but cannot take criticism. “Count Gramalkin™ ©1970 <http://www.gramalkin.com>”

\*

2) Physical: Short; Stocky; Muscular; Well Built; Lean Body; Heavy-set; “Plutonians” may appear fat but are not; Shaggy Beard. (Scorpio = Throat (snake like); Larynx; Thyroid; glands).

3) Medical: Fits; Seizures; Epilepsy; Convulsions; Paralysis; Poisons; Cell Salt? = Calcareo Sulphurica (C.S.), Cobalt, Plutonium.

4) Mundane:

Change; Miracles; The Four Horsemen of the Apocalypse - Death, Famine, War; Plague; Warrior; Fighter; Rebellion; Separation; Divorce; Hermit; Chaos; Accidents; The Underworld; Pestilence; Jasper; Plutonium; Occultism; #10; The Shaggy Generation; The end of a cycle (or relationship - usually unpleasantly); Poisons (e.g. gas if used as a poison); Kidnapping (may shanghai another or be shanghaiied ones self); The Atomic Bomb; During heavy “Pluto” transits one wants to blow off everything and move away; Accident and crises prone; Too boil it all down most common manifestation of Pluto is “Crisis.” Pluto is a solitary worker a poor mixer, the eternal lone wolf. Sooner or later one breaks from his home, putting behind him all it represents in respectability, tradition and orthodoxy, for the Pluto native is the eternal rebel. Shyness, diffidence, remoteness, austerity, and sardonic smile are characteristics of this planet. The secret to dealing with Pluto is the ability to adjust to the changes moment to moment rather than letting them build up into crises and to refrain from bicker and argue.

\*\*\*

\*

\*

\*\*\*

"Sidereal Horoscopes"

By  
Count Gramalkin

"Fixed Stars and When They Count in Horoscope Delineation - Epoch Omega 1977 - The Big 44"

Stars of the 1<sup>st</sup> and 2<sup>nd</sup> magnitude the extra-Zodiacal of which that count in are mostly in the northern latitudes aspected to or conjunct (in Zodiacal Sidereal Celestial Longitude) any angle within a one degree orb equal a conjunction of the Intrinsic Value of the star and the angle. Stars aspecting a Natal, or Secondary-Progressed or an angular or an angular house cyclic chart planet within a zero degree orb (60') count via the Intrinsic Value of the star, planet and aspect. Herewith is a list of Fixed Stars that count listed by degree in order to make it easy and fast to check aspects to a file. The Robson Planetary Symbology rather than the Classical Names show the Intrinsic Value of the Stars. \* = Zodiacal Stars; mg = Magnitude; \ = Conjunction; v9-11.11

00 Pisces 59	35 N 07	Sheat (Good Fortune)	2 mg	Mars\Mercury
01 Cancer 04	16 S 07	Procyon (Lesser Dog)	1 mg	Mercury\Mars
01 Taurus 26	22 N 05	Algol (Ghoul)	2 mg	Saturn\Jupiter
02 Leo 32	22 S 23	Alphard (Solitary One)	2 mg	Saturn\Venus
03 Gemini 47	66 N 15	Polaris (Pole Star)	2 mg	Saturn\Venus
04 Scorpio 53	42 S 34	Bungula (Toliman)	1 mg	Venus\Jupiter
04 Gemini 01	16 S 04	Betelgeuse (Orion's Shoulder)	1 mg	Mars\Mercury
05 Leo 06*	00 N 28	Regulus (Little King)	1 mg	Mars\Jupiter
05 Gemini 10	21 N 30	Menkalinan (Auriga's Shoulder)	2 mg	Mars\Mercury
05 Aries 39	25 N 56	Mirach (Girdle)	2 mg	Venus
07 Capricorn 01	29 N 19	Altair (Vulture)	1 mg	Mars\Jupiter
07 Pisces 29	20 S 47	Difda	2 mg	Saturn
07 Scorpio 49*	01 S 48	Isidis or Jubba (Forehead)	2 mg	Mars\Saturn
09 Aquarius 06	21 S 07	Formalhaut (Mouth of the Fish)	1 mg	Venus\Mercury
10 Aquarius 36	59 N 54	Deneb (Tail)	1 mg	Venus\Mercury
12 Aries 55*	09 N 57	Hamal (Sheep, Head of Aries)	2 mg	Mars\Saturn
14 Gemini 22*	06 S 45	Alhena (Burned-in Brand)	2 mg	Mercury\Venus
15 Taurus 03*	05 S 28	Aldebaran (Forecaster or Follower)	1 mg	Mars
15 Scorpio 04*	04 S 34	Antares (Rival of Mars or Cor Scorpii)	1 mg	Mars\Jupiter
16 Leo 34*	14 N 20	Zosma	2 mg	Saturn\Venus
17 Libra 08	52 S 52	Acrux (In the Southern Cross)	1 mg	Jupiter
17 Libra 33	44 N 38	Alphecca (Northern Crown)	2 mg	Venus\Mercury
19 Gemini 21	39 S 35	Sirius (Dog Star, Sothis)	1 mg	Jupiter
19 Aries 29	27 N 48	Almach (Badger)	2 mg	Venus
19 Pisces 34	25 N 21	Alpheratz (Andromeda's Head)	2 mg	Jupiter\Venus
20 Gemini 15	76 S 51	Canopus	1 mg	Saturn\Jupiter
20 Aquarius 30	59 S 22	Achernar (End of the River)	1 mg	Jupiter
20 Sagittarius 33	61 N 45	Vega (Falling One)	1 mg	Venus\Mercury
22 Taurus 05	31 S 08	Rigel (Orion's Foot)	1 mg	Jupiter\Mars
23 Scorpio 14	07 N 13	Sabik (Preceding)	2 mg	Saturn\Venus
25 Gemini 30*	10 N 05	Castor	2 mg	Mercury
26 Taurus 11	16 S 48	Bellatrix	2 mg	Mars\Mercury
26 Leo 52*	12 N 17	Denebola (Lion's Tail)	2 mg	Saturn\Venus
27 Taurus 07	22 N 53	Capella (She-Goat)	1 mg	Mars\Mercury
27 Taurus 26	57 S 23	Phact	2 mg	Venus\Mercury
27 Taurus 37	23 S 39	Mintaka (In Orion's Belt)	2 mg	Saturn\Mercury
27 Scorpio 41	35 N 52	Ras Alhague (Snake-Charmer's Head)	2 mg	Saturn\Venus
27 Taurus 50*	05 N 22	El Nath (Bull's North Horn)	2 mg	Mars
28 Gemini 29*	06 N 40	Pollux	1 mg	Mars
28 Aquarius 45	19 N 25	Markab (Saddle)	2 mg	Mars\Mercury
29 Libra 02	44 S 07	Agna	1 mg	Venus\Jupiter
29 Virgo 06*	02 S 02	Spica (Ear of Corn)	1 mg	Venus\Mars
29 Virgo 30	30 N 49	Arcturus	1 mg	Mars\Jupiter

Fagan's chosen heir Mazurek said Robson's text is cosmic jive yet the planetary cross-reference is suprisingly accurate.

"Sidereal Horoscopes"

By  
Count Gramalkin

"Fixed Stars and When They Count in Horoscope Delineation - Omega Epoch 1977 - The Big 44"

Stars of the 1<sup>st</sup> and 2<sup>nd</sup> magnitude the extra-Zodiacal of which that count in are mostly in the northern latitudes aspected to or conjunct (in Zodiacal Sidereal Celestial Longitude) any angle within a one degree orb equal a conjunction of the Intrinsic Value of the star and the angle. Stars aspecting a Natal, or Secondary-Progressed or an angular or an angular house cyclic chart planet within a zero degree orb (60') count via the Intrinsic Value of the star, planet and aspect. Herewith is a list of Fixed Stars that count listed by degree in order to make it easy and fast to check aspects to a file. The Robson Planetary Symbology rather than the Classical Names show the Intrinsic Value of the Stars. \* = Zodiacal Stars; mg = Magnitude; \ = Conjunction; v9-11.11

00 Pisces 59	35 N 07	Sheat (Good Fortune)	2 mg	Mars\Mercury
01 Cancer 04	16 S 07	Procyon (Lesser Dog)	1 mg	Mercury\Mars
01 Taurus 26	22 N 05	Algol (Ghoul)	2 mg	Saturn\Jupiter
02 Leo 32	22 S 23	Alphard (Solitary One)	2 mg	Saturn\Venus
03 Gemini 47	66 N 15	Polaris (Pole Star)	2 mg	Saturn\Venus
04 Scorpio 53	42 S 34	Bungula (Toliman)	1 mg	Venus\Jupiter
04 Gemini 01	16 S 04	Betelgeuse (Orion's Shoulder)	1 mg	Mars\Mercury
05 Leo 06*	00 N 28	Regulus (Little King)	1 mg	Mars\Jupiter
05 Gemini 10	21 N 30	Menkalinan (Auriga's Shoulder)	2 mg	Mars\Mercury
05 Aries 39	25 N 56	Mirach (Girdle)	2 mg	Venus
07 Capricorn 01	29 N 19	Altair ( Vulture)	1 mg	Mars\Jupiter
07 Pisces 29	20 S 47	Difda	2 mg	Saturn
07 Scorpio 49*	01 S 48	Isidis or Jubba (Forehead)	2 mg	Mars\Saturn
09 Aquarius 06	21 S 07	Formalhaut (Mouth of the Fish)	1 mg	Venus\Mercury
10 Aquarius 36	59 N 54	Deneb (Tail)	1 mg	Venus\Mercury
12 Aries 55*	09 N 57	Hamal (Sheep, Head of Aries)	2 mg	Mars\Saturn
14 Gemini 22*	06 S 45	Alhena (Burned-in Brand)	2 mg	Mercury\Venus
15 Taurus 03*	05 S 28	Aldebaran (Forecaster or Follower)	1 mg	Mars
15 Scorpio 04*	04 S 34	Antares (Rival of Mars or Cor Scorpii)	1 mg	Mars\Jupiter
16 Leo 34*	14 N 20	Zosma	2 mg	Saturn\Venus
17 Libra 08	52 S 52	Acrux (In the Southern Cross)	1 mg	Jupiter
17 Libra 33	44 N 38	Alphecca (Northern Crown)	2 mg	Venus\Mercury
19 Gemini 21	39 S 35	Sirius (Dog Star, Sothis)	1 mg	Jupiter
19 Aries 29	27 N 48	Almach (Badger)	2 mg	Venus
19 Pisces 34	25 N 21	Alpheratz (Andromeda's Head)	2 mg	Jupiter\Venus
20 Gemini 15	76 S 51	Canopus	1 mg	Saturn\Jupiter
20 Aquarius 30	59 S 22	Achernar (End of the River)	1 mg	Jupiter
20 Sagittarius 33	61 N 45	Vega (Falling One)	1 mg	Venus\Mercury
22 Taurus 05	31 S 08	Rigel (Orion's Foot)	1 mg	Jupiter\Mars
23 Scorpio 14	07 N 13	Sabik (Preceding)	2 mg	Saturn\Venus
25 Gemini 30*	10 N 05	Castor	2 mg	Mercury
26 Taurus 11	16 S 48	Bellatrix	2 mg	Mars\Mercury
26 Leo 52*	12 N 17	Denebola (Lion's Tail)	2 mg	Saturn\Venus
27 Taurus 07	22 N 53	Capella (She-Goat)	1 mg	Mars\Mercury
27 Taurus 26	57 S 23	Phact	2 mg	Venus\Mercury
27 Taurus 37	23 S 39	Mintaka (In Orion's Belt)	2 mg	Saturn\Mercury
27 Scorpio 41	35 N 52	Ras Alhague (Snake-Charmer's Head)	2 mg	Saturn\Venus
27 Taurus 50*	05 N 22	El Nath (Bull's North Horn)	2 mg	Mars
28 Gemini 29*	06 N 40	Pollux	1 mg	Mars
28 Aquarius 45	19 N 25	Markab (Saddle)	2 mg	Mars\Mercury
29 Libra 02	44 S 07	Agena	1 mg	Venus\Jupiter
29 Virgo 06*	02 S 02	Spica (Ear of Corn)	1 mg	Venus\Mars
29 Virgo 30	30 N 49	Arcturus	1 mg	Mars\Jupiter

Fagan's chosen heir Mazurek said Robson's text is cosmic jive yet the planetary cross-reference is suprisingly accurate.

\*\*\*\*\*

## Mazurek Arabic Lunar Mansions = 12°:51' Each

\*

### Fixed Constellations

*Taurus (=Venus), Leo (=Sun), Scorpio (=Pluto), Aquarius (=Uranus)*

*Moon Mansion = 00d:00m (Moon from 0 degree to 12°:51')*

*Saturn = 12°:51'*

*Jupiter = 25°:43'*

\*

### Mutable Constellation

*Gemini (=Mercury), Virgo (=Mercury), Sagittarius (=Jupiter), Pisces (=Neptune)*

*Mars = 8V:34'*

*Sun = 21°:26'*

\*

### Cardinal Constellations

*Cancer (=Moon), Libra (=Venus), Capricorn (=Saturn), Aries (=Mars)*

*Venus = 4°:17'*

*Mercury = 17°:08'*

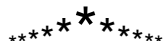
\*

*The Approximate dates of the Lunar Mansions. Due to the “Leap Year” phenomena actual dates may vary and should be checked with an Ephemeris.*

\*

<i>1/6 = Sun/Sagittarius</i>	<i>7/8 = Sun/Gemini</i>
<i>1/19 = Venus/Capricorn</i>	<i>7/22 = Venus/Cancer</i>
<i>1/31 = Mercury/Capricorn</i>	<i>8/4 = Mercury/Cancer</i>
<i>2/13 = Moon/Aquarius</i>	<i>8/17 = Moon/Leo</i>
<i>2/26 = Saturn/Aquarius</i>	<i>8/31 = Saturn/Leo</i>
<i>3/4 = Jupiter/Aquarius</i>	<i>9/13 = Jupiter/Leo</i>
<i>3/24 = Mars/Pisces</i>	<i>9/26 = Mars/Virgo</i>
<i>4/6 = Sun/Pisces</i>	<i>10/10 = Sun/Virgo</i>
<i>4/19 = Venus/Aries</i>	<i>10/23 = Venus/Libra</i>
<i>5/2 = Mercury/Aries</i>	<i>11/4 = Mercury/Libra</i>
<i>5/15 = Moon/Taurus</i>	<i>11/17 = Moon/Scorpio</i>
<i>5/27 = Saturn/Taurus</i>	<i>11/29 = Saturn/Scorpio</i>
<i>6/11 = Jupiter/Taurus</i>	<i>12/12 = Jupiter/Scorpio</i>
<i>6/24 = Mars/Gemini</i>	<i>12/25 = Mars/Sagittarius</i>

\*\*\*\*\*



# "Sidereal Horoscopes"

By

Count Gramalkin

Western Sidereal Astrology Zodiacal Fixed Zodiac Professional Astrologer

San Francisco School of Sidereal Astrology Intrinsic Values of the Planets Technique of Delineation

<http://www.countgramalkin.com> 1 877 322 7238 Toll Free Order Numger +Fax CountGramalkin@CountGramalkin.Com

Spring 1970 v4-24.12

## "The San Francisco School of Sidereal Astrology Technique of Delineation"

### I. WHAT COUNTS

- (A) The Operating Law
- (B) The Zodiacal Sidereal Ecliptical Celestial Longitude (as a Measuring Device)
- (C) The Intrinsic Values of the Planets and Angles

### II. TECHNIQUES OF DELINEATION

- (A) Natal Technique
- (B) Progressed Technique
- (C) Predictive Technique

### III. STARS AND WHEN THEY COUNT

### IV. THE ART OF DELINEATION

### V. TIMING OF EVENTS

### VI. ART OF SYNTHESIS

### IA. THE ELEMENTS OF LAW

- (A) The Purpose e.g. (The "Case" the law is to deal with).
- (B) The Letter (The "Literal" translation of the law).
- (C) The Intention (What the law hopes to accomplish).
- (D) The Spirit (The true meaning of the law which rises above the letter of the law).

THE OPERATING LAW = (AKA. The Mystic Law, Mother Nature, Holy Ghost) (Divine Grace and Forgiveness may at will supersede law).

- (A) System and Order
- (B) Rhythm and Harmony
- (C) Polarity
- (D) Balance
- (E) Cycles
- (F) Analogy (the Hermes Law of correspondences, "As Above So Below")
- (G) Cause and Effect

## II "SIDEREAL TECHNIQUES OF DELINEATION"

### II. Some General Rules.

(A) Galaxies make up universes. Universes make up Cosmic Spheres. Our cosmic sphere is the matter of which our sun is the center. The zodiac ecliptic is the baseline of the three dimensional model of our cosmic sphere. Do horoscopes in standard time for the place of birth in Zodiacal Sidereal Celestial Longitude Ecliptic with the Fagan fixed star Spica at 29° Virgo 6':5" epoch 1977 Geographic, Campanus Table of Houses (Midheaven = 10th house Ascendant = 1st house cusp), The Nine Octoscope and East Point Angles, Arabic Lunar Mansions, Major Fixed Star Aspects and Constellation Breaks. The complete horoscope file baseline is The Natal; Secondary Progressed Planets and Primary Angles also the Secondary Natal Quotidian (natal data at progressed date and Star Time rather than primary directions SNQ = the natal progressed to the day); Solar Return, Monthly Solar Return, Lunar Return and their daily Progressed Main Angles also the Event Chart interaspected with the Transits and major Fixed Stars to all. The natal with two a year, two a month and four a day plus the Event Horoscope (Transits which is done for the location of event) interaspected. One copy of each chart by its self, one interaspected copy of each horoscope. The repeated pattern of illuminated angularity being the most important factor. Interaspects between charts are all about the same difference, Jupiter is Jupiter. Local natal 4 main angles read location affect after 21ish days are unaffected by transits nor affect during travel.

- (B) All angular planets in the same chart are in angular aspect equaling a conjunction in strength.
- (C) A Zero Degree Orb planet or 1st or 2nd magnitude star aspect to any angle equals a conjunction of the Intrinsic Value and angle.
- (D) Campanus Interior Angles (cusp of 2nd, 3rd, 5th, 6th, 8th, 9th, 11th, 12th, (Watch Cusps?) have a thirty minute "Angular Orb."
- (E) Order of Strength.
  1. Angular (Main Angles, East Point, Watch Midpoint Angles).
  2. Aspect to Angles. "Count Gramalkin"™ ©1970 v3-24.12

3. Angular or Foreground Houses (1st, 4th, 7th, 10th = High-energy zone).
  4. Interior angles (Campanus house cusps only). Houses form aspects and show energy level. The Watches have delineation.
  5. The Middleground Houses (2nd, 5th, 8th, 11th = Medium energy zone).
  6. The Background Houses (3rd, 6th, 9th, 12th = Low energy zone).
- (F) Especially on a Cyclic Chart, if an aspect to an Angle comes from an Angular House it is in Angular Aspect to all Angular House Planets. A Blue Moon is two consecutive full moons in one constellation meaning the planets in the solar cross get two high-energy periods.
- (G) Forces act Independently and Collectively. Chaldean Numerology is best; pat # uses month, day, & last digit of year.
- (H) Angular planets light Non-Angular planets they aspect. The East Point has a zero degree (60') angle orb.
- (I) The Sun and Moon are lights (Spirit & Soul). They illuminate whatever is there. Mercury (Intellect) is Neutral and Expresses whatever is there. Jupiter=Win, Venus=Love, Uranus=Intuition are the Major Benefices+. Mars, Saturn, Neptune and Pluto are Malefic- (Sex; Lose; Imagination; Death). Superior Angles are Positive (Octoscope angles one to four). Inferior Angles are Negative (Octoscope angles five to eight). The Octoscope is only used on Natal and Cyclic charts. Due to the law of Polarity it can go either way however generally Natal = your reaction; Progressed = how you are & feel / sending out; Cyclic & transits = outside influences / coming in. In the Natal Horoscope the Constellation and Lunar Mansion on the Ascendant modified by - the Sun and Moon their positions and situation, any rising planets angular (five degree orb) or in the constellation on the ascendant and any "Fixed Star" zero degree the Ascendant symbolize the body.
- (J) In a Cyclic Chart Angular Planets must be aspected by other Angular Planets to have any affect, yet they shed light on non angular planets they aspect. In a Solar Return the Moon is the most important planet, in a Lunar Return the Sun is the most important planet, all aspects to them count. Arabic Lunar Mansions = 12D:51' from 0 degree Fixed and run Moon, Saturn, Jupiter, Mars, Sun, Venus Mercury. The Seven-Year Lunar Return is done for the conjunction opposition and squares of the Secondary Progressed Moon to the Natal Moon. Natal Technique of Delineation, zero transits. The reader should be compassionate yet detached.
- (K) In drawing the horoscope do all math twice and write EVERYTHING left to right *horizontally*. Date Time and Standard Time of event in the center. Full Birth Name (maiden) Race Gender and place upper left. Coordinates SVP Delta T and GMT to RAMC in the upper right hand corner. Horoscope Identification in the upper middle Such as: Sidereal Zodiacal Longitude Natal Geographic Campanus Octoscope (and unless you physically see a birth certificate eTc. the word SPECULATIVE). Whatever decoding is necessary. Major aspects and angular planets and stars eTc at the bottom. Draw in all the angles, the 4 Main, the 4 Octoscope Midpoint and East Point angles. Draw angular planet glyphs on the angle, lacking space draw a line from the planet glyph across the angle. Dash Lines - - - = A Constellation Change. Draw one copy of the horoscope taken by itself, another copy for interaspect composite. Draw Natal in black, Secondary Progressed red, Solar Return green. Draw all composite charts the same way regardless of type Natal in the center in black then Progressed in red then Solar green, Monthly Solar and Lunar Returns in available colors, transits in pencil (use just planet glyph & degree; '&' + all angles & fixed stars eTc as needed).
- (L) The Following Items Have Z E R O Relevant Delineation In Work-A-Day Astrology: Asteroids; Comets; Deacons; Part of Fortune; Moon Nodes; Geocentric & Heliocentric; Parallels; Paran; Celestial Latitude; Altitude; Right Ascension; Declination; Equator; Horizon; Apogee and Perigee; Ennead/Novile/Harmonics (Sun @3 aspect moon @9 as 3x3=9); How close a planet is to earth; Hierarchical Rulers; Exaltation; Dignity & Fall; Mutual Reception; Detriment; Reckoning Celestial Longitude/Horoscopes in Seasonal/Tropical Moving Zodiac Astrology; Tropical natal 12 house system of delineation & House Rulers (Who Rules A House Is Whose Home); Planets Becoming Friends, Enemies, Neutral Biased on House or Sign; Whole Sign House System; Placidian Houses; Retrograde is bad; Aspects being good or bad by nature; Using first event charts as a natal to predict events; The Triplicities form of the elements - Fire, Earth, Air, Water in order around the Zodiac; The cusps, such as being in the Aries/Taurus cusp or planets losing power on the cusp; Midpoints Between Planets or between planets and angles; Natal, Progressed or Cyclic Horoscopes done for the place of residence rather than the place of birth; Almost all data about planetary orbs; Dealing with interpersonal relationships the interaspects between charts are much more important than having supposedly harmonious and inharmonious signs or consecutive signs or trine ascendants and such.
- (M) Eclipses occur frequently and their intrinsic value boils down to nothing more than a high energy level intense situation. Solar eclipses are stronger than lunar eclipses. How they affect one personally and the duration of their effects depends on how they aspect ones horoscopes file and the type of horoscope chart upon which they occur. If the eclipse occurs to an angle, angular Natal planets, an angular transit, a Secondary Progressed planet, Solar Return planet especially if angular one will experience the intrinsic value of the planet or planets involved also the intrinsic value of the angle and station involved. In other words if the eclipse occurs on one of your hot planets and or on one of your angles one will experience the intrinsic value of the illuminated situation. Duration of Effect: If the eclipse occurs on a Natal, Secondary Natal Quotidian (SNQ), Progressed Sidereal Solar Return, Progressed Lunar Return or Progressed Monthly Solar Return or on the Progressed Primary Angles the effects will be felt for one lunation period or approximately twenty-seven days. On a cyclic horoscope chart (Solar, Monthly Solar or Lunar Return et cetera the effect will be felt for the duration of the chart period. An eclipsed Secondary Progressed planet will have effects for the amount of time the progressed planet is conjunct the eclipsed progressed degree. Use regular aspect/orb rules.
- (N) The precious and semi precious stones and metals are so because they have consciousness and powers. They channel the energy of their planetary symbology, attracting the positive qualities deflecting the negative. Transcendental symbology in transcendental biochemistry around the body on the skin above the heart channels best, within six inches works also - Two unbroken carrots of the gemstone two pennyweights of metal minimum cut or in matrix. Everyone should carry Gold, Silver, Copper, Agate, Quarts Crystal, and Lapis Lazuli. Cary (in zero leather) a "Biochemical Balance Prescription" of ones natal chart reproduced in proportion in stone and metal.

(O) Always consider all charts with all the Techniques of Delineation then apply the appropriate one for the type of problem being solved.

I.A. The Natal Technique of Delineation is used in reading Natal and Cyclic charts for the “Psychological Conditions / Psychological Makeup” which show how we relate to things therefore how things happen to or for us as above so below (With some cyclic exception rules). Know the kind of time used to record the birth such as standard or daylight savings time. Whose home rules a house. Aspects are by Sign and House example all planets in the same sign or Campanus house are conjunct. The angle orbs are: The Constellation on the Ascendant and the first house is the Ascendant Angle; Minus ten degrees from the Midheaven and the Tenth House is the Midheaven Angle; The Descendent and Nadir minus five degrees and the Angular or Foreground house constitute the Angle. The Watch Midpoint Angles are the Zodiacal Midpoints between the four Main Angles; they are at the center of the 8 Watches and have a five-degree orb of Angularity. The Watch Cusps are the midpoints between the main angles and the midpoint angles (30' angular orb?). The Octopus is the Octoscope without the watch cusps. Watches run clockwise from Ascendant 1=Self/Body-Will Power-Akin to 2nd moon colors mind-4°:30' AM to 7°:30' AM; 2=Livelihood-\$ Work For-7°:30' AM to 10°:30' AM; 3=Status/Position in world-Career-Mother-Brothers-Sisters-Travel-10°:30' AM to 1°:30' PM; 4=Home-\$ Get-1°:30' PM to 4°:30' PM; 5=Others-4°:30' PM to 7°:30' PM; 6=Health Problems-7°:30' PM to 10°:30' PM; 7=Spouse-Father-May affect home-10°:30' PM to 12°:30' AM; 8=Death-12°:30' AM to 4°:30' AM. Technically the Angles have a five-degree Angle Orb and planets within that five degrees are more intense. However for all practical purposes for Psychological Conditions and Makeup / Character the Constellation on the Ascendant is Angular eTc. Reading interpersonal relationships: Horoscope and planet interaspects you get your own planet; planets give to angles; Sun always gives. Natal and cyclic chart interaspects are by sign the closer the stronger. Progressed charts use close aspects. He has Natal Aries Sun, She has Natal Aries Moon = His Sun (Spirit) is conjunct Her Moon (Soul) the basic yin yang couple polarity. In business X has Jupiter in Gemini; Y has Saturn in Gemini = X wins you get your own. A's Moon on B's Ascendant B gets Moon planets give to angles. I.IB. The Predictive Technique: The Natal; Secondary Progressed Planets and Primary Angles; Secondary Natal Quotidian (SNQ); Solar Return, Monthly Solar Return and Lunar Return and their daily Progressed Main Angles; also the Event Chart interaspected with the Transits and major Fixed Star aspects to all. Reading the Natal Horoscope, Cyclic Charts, and Event Chart with a five-degree angle orb and the Progressed Charts at a zero degree angle orb. Repeated pattern of illuminated angularity being the most important factor. I.IC. The Progressed Technique: For Timing of Events read all charts with the Progressed Technique which is a zero degree (60') Angle and Aspect orb. Normal rules apply, applying aspects are stronger than separating etc. Progressed Charts are basically daily charts; they may be read as Event Charts with a Natal Technique for a several days span. The Annual Secondary Progressed a several years span.

### III “FIXED STARS”

III. Fixed Stars of the first and second magnitude, the extra zodiacal of which that count are mostly in the northern latitudes, aspected to or conjunct any Angle, or a Natal or Secondary-Progressed planet or an Angular or an Angular House Cyclic Chart planet within a zero degree aspect orb (60') count via Intrinsic Values of Star, Planet, Angle / Station and Aspect.

### IV “ART OF DELINEATION”

IV. The art of “Delineation” is The “Individual, and the Collective Intermingling of the, Astrological Intrinsic Values.” First state astrological case then delineate. The “Forces” (Planets, Angles eTc.) exist “Individually and Collectively.” Take the Intrinsic Value of one planet. It exists independently like it was the only one there. The Intrinsic Value of the other planet exists independently also. Intermingle Intrinsic Values they also exist collectively. Read the ebb and flow ratio proportion of the distribution stack up between the intrinsic astrological variables. E.g. Jupiter = Happiness, Overindulgence. Venus = Love, Overindulgence. Jupiter conjunct Venus = Happiness, Love, Double the Overindulgence. To see how the Intrinsic Values will manifest, repeat the Individually and Collectively Intermingling process with their Station and Situation. E.g. Happiness, Love, Overindulgence on Station Ascendant = You are, on the Midheaven = Career is, in Taurus gives a nice Artistic Love foundation. In the Saturn Lunar Mansion of Taurus = Happiness, Love, Artistic, add Frustrated and Denied Patient and Practical heavier on the Overindulgence eTc. Square Uranus the Intuition aids, ad's excitement eTc. Count Score on +&- to read Higher \ Lower Self, Yes \ No \ Maybe eTc. To delineate in any given sphere use the Intrinsic Adjectives common to that sphere. E.g. Venus - Psychologically = Love & Peace. Mundanely = Food & Clothes. Medically = Kidney. When there is an orange tail sticking around the corner and one grabs the tail rather than having a tail one actually has the entire Tiger. So it is with the “Intrinsic Values of the Planets.” When one identifies having hold of any part of an Intrinsic Value one actually has the entire planet (or Sign). When one is happy one has Jupiter therefore all of the Jupiter qualities good and bad. The idea is to consciously project the “higher self” or positive qualities of the planet rather than “lower self-essence dominated reacting” with the lower self-qualities. Read the Intrinsic Value of the planet in your notes and send out the + side. Be your HIGHER self.

### V “TIMING OF EVENTS”

V. Timing of Events: Angular Illuminated Simultaneous Occurrence; e.g. When an Angle is Transiting a Planet especially if the Planet is Angular and being transited also and the Moon is there transiting Sun is exactly square on the angles of several charts. It is the PHD in Astrology (piled higher and deeper). The more things happening at once the more intense the experience. Count Score with the Technique of Delineation to see what's occurring. There is a lot of gray then the repeated pattern of big events is so obvious they are easy to read.

### VI “THE ART OF SYNTHESIS”

VI. To “Synthesize” a chart first look at the Sun taken by it's self, then Moon (Sign, Watch, House and Lunar Mansion), the Ascendant then Midheaven (4 =Quarters), then Angles (which solar cross / split cross / Lunar Mansion eTc.). The Most Angular Planet and its situation, the next most Angular Situation, the next most Angular Situation. There are usually two or three basic situations. Good Luck, Count Gramalkin

\*\*\*

# “Sidereal Horoscopes”

By

Count Gramalkin

Western Sidereal Astrology Zodiacal Fixed Zodiac Professional Astrologer

Spiritual Evolution Self Realization Truth Seeker Disciple - Truth Changes Not

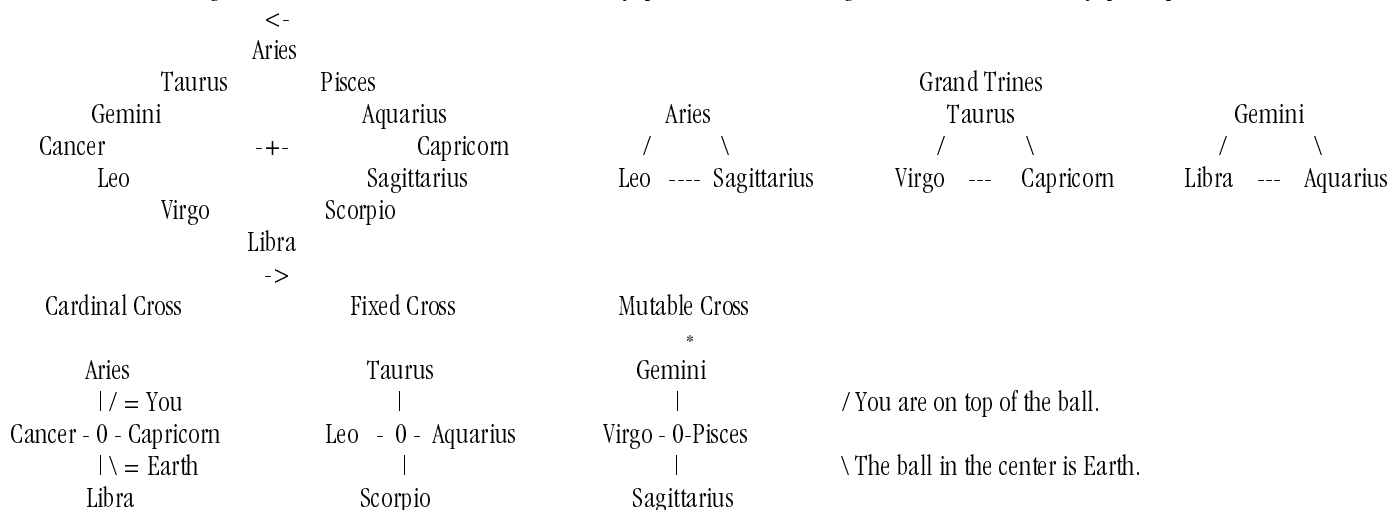
San Francisco School of Sidereal Astrology Intrinsic Values of the Planets Technique of Delineation

<http://www.countgramalkin.com> - 1 877 322 7238 Toll Free Order Numger + Fax - [CountGramalkin@Gramalkin.Com](mailto:CountGramalkin@Gramalkin.Com)

"The Intrinsic Value of the Solar Crosses and Grand Trine Triplicities"

\*\*

Due to the fact that there are twelve “Constellations” or “Signs” within the circle of the “Zodiac” there are three natural “Solar Crosses” formed. “The Cross” emanates from within ones “Solar Plexus” and is symbolized astrologically by the Main Angles. The Ascendant (Rising Sign) \ Descendant and the Midheaven \ Nadir. The best case scenario is to have an even mix of all three crosses such as a Cardinal Sun with a Mutable Moon and a Fixed Ascendant with a Split Cross on the Angles (Leo Rising / Aries Midheaven). This tends to add balance to the case at hand. The leader that can do things themselves yet is adaptable, refrains from “I” have to be right all he time eTc. As now we know the elements fire earth air water in zodiacal Triplicities or trigon order is a fallacy to me the “Grand Trines” each of which include a sign from all three crosses simply show some balance in the application of the Intrinsic Values of the trine aspects involved Planet, Arabic Lunar Mansion, Fixed Star, Sign and Station. Example Venus @15 Aries trine Jupiter @15 Leo trine Uranus @15 Sagittarius = Venus Venus Mars (leader) trine Jupiter Saturn Sun (sergeant) trine Uranus Mars Jupiter (private).



\*\*

The “Cardinal Cross” is symbolized in the Tarot by the “Kings”

\*\*

The Cardinal Signs Symbolize the Leaders; Executives; Commissioned Officer; Top Ranked; Politically Motivated; “Cardinal Relationships” last a long time.

\*\*

The “Fixed Cross” is symbolized in the Tarot by the “Queens”

\*\*

The Fixed Signs Symbolize the Middle Management; Foreman; Non Commissioned Officers, Sergeants. They can actually do things themselves (fix the car eTc). They are in the center of activity. Make things hustle at the hub of activity. Management on the one hand Labor on the other. Phone and door bell always ringing. They are Industrious Determined; I.E. You can’t do that, yes I can. Sticktuitive. "Gramalkin™ ©1970" v4-24.12"

\*

The “Fixed Constellation” Native tend to Brain-lock on their Bullheaded Fixations, Pushy, Meat headed, Obstinate, Stubborn, Inadaptable, Thick-headed Unreasonable. Even Physically they are “thick” people. The “Classic Case Fixed Constellation Native” is standing there banging its head on the rock. Why? “The idea came to me back in “37” and I have been here banging my head on this rock these many years hence.” Nothing anyone can say or do will help the “Fixed Native” realize there are better life conditions than banging ones head on the same old rock lifetime after lifetime after incarnation. Hey a guys got to at least change rocks now and again. Or get really radical and let the rocks bang on you for a change. In fact sometimes one can duck those boulders. Don’t move someplace under “Fixed” symbology, one can’t get out. “Fixed Constellation Relationships” can last a long time.

\*\*

The “Mutable Cross” is symbolized in the Tarot by the “Pages”

\*\*

The Mutable Signs symbolize the more common man; privates; laborers; workers. They are adaptable, don’t have to be “right” all the time. The Mutable Signs tend to be weak; unstable; unreliable; unbalanced easily shaken; vacillating; indecisive; mental sign, long on intellect short on will power (especially Gemini and Virgo); get shoved around; let someone else do the hard job, take the easy job. Mutable Constellation Relationships tend to be short lived.

\*\*\*

\*\*\*

"Sidereal Horoscopes"

By

Count Gramalkin

"Celestial Location Orienteering"

<http://www.CountGramalkin.com> - 1.877.322.7238 Order Numger - CountGramalkin@CountGramalkin.Com

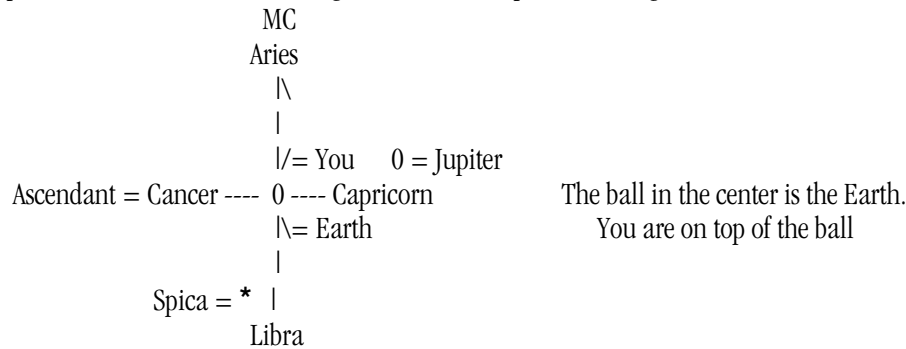
Delineating the location of the Zodiac or Ecliptic and thereby the stars and planets is quite simple given correct data (date, time and hemisphere). The ARC of the Suns PATH through the heavens in the day shows the latitude arc of the Zodiac therefore the latitude of the planets by night. The date tells what Constellation the Sun is in. The Sun is always in its Constellation and in the Zodiac. The apparent daily motion of the Sun about the earth is a twenty four-hour clock with zero hour equals midnight. Gaze toward the Equator at noon, Sun in say...Aries is overhead (12 noon station). Sunset Constellation Aries is setting in the west (6 PM station). Midnight Sun at Constellation Aries would be on the opposite side of the planet below one (at 0 hour or midnight station). Dawn Constellation Aries and the Sun is rising east (6 AM station). v4-24.12

\*

The "Main Angles" = Ascendant\Descendant & Midheaven\Nadir. Where the arc directly overhead crosses the Zodiac is the Midheaven. Where the arc ninety degrees east of the Midheaven crosses the Zodiac is the Ascendant. Knowing the order of the signs and that the Sun Transit of the SIGNS or CONSTELLATIONS go approximately from the 15th to the 15th April 15 beginning Aries lets one spot where the Sun its Constellation and Station is at a given time of day. Count the Signs from the Suns Station to the Sign of any given Sidereal Zodiac Longitude (from a Ephemeride, table, map) of what star, planet, comet one is seeking to point at locate the Zodiacal longitude of points of interest.

\*

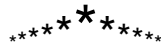
The Sun transits a Constellation in about thirty days. A Sign transits a fixed terrestrial point, a "Midheaven Meridian" or tree in about two hours. Really the earth rotates thirty degrees every two hours, a degree every four minutes. For example: May 1st the Sun is in the middle of the constellation Aries. One is in the Northern Hemisphere so a heavenly gaze equator earth south at noon shows the Sun overhead yet still fairly low on the Horizon Note the Suns daily arc through the heavens which is the location of the Zodiac. Note the arc of the "Midheaven Meridian" (Medium Coeli) going directly overhead to where it intersects the Sun transiting the Zodiacal Constellation of Aries. Constellations Aries and Libra are in 180-degree opposition so Constellation Libra is below you on the other side of the planet at the 0-hour or 12 AM station. Cardinal Cross Angular, ninety degrees to ones left on the Ascendant in the 6 AM station Constellation Cancer is rising so planet Jupiter in opposition Constellation Capricorn would be setting ninety degrees to the right in the Descendent or 6 PM station. So where's the Spica, pal?...The famous fiducial navigation fixed star Spica at 29 Virgo would be about the 1:AM station on the opposite side of the planet.



Approximate dates Epoch 1950:

(Cardinal Cross)	(Fixed Cross)	(Mutable Cross)	Cardinal Cross	Fixed Cross	Mutable Cross
Aries = 4\15	-> Taurus = 5\15	-> Gemini = 6\15	Aries	Taurus	Gemini
Cancer = 7\16	-> Leo = 8\17	-> Virgo = 9\17	/= You		
Libra = 10\17	-> Scorpio = 11\16	-> Sagittarius = 12\16	Cancer - 0 - Capricorn	Leo - 0 - Aquarius	Virgo - 0 - Pisces
Capricorn = 1\15	-> Aquarius = 2\24	-> Pisces = 3\15	\  = Earth		
			Libra	Scorpio	Sagittarius

Here is a test for you. Midnight December 25 Northern Hemisphere the Moon and Mercury are in Sagittarius. Mars in Cancer. Saturn in Leo. Jupiter in Aries. Venus in Aquarius. You are seeking Star Alderbaran at 15 Taurus. Which planets can be seen and where are they? Where is Alderbaran and what are the two huge Stars on the Mid-Heaven? At midnight the Mutable Cross is on the Angles the Sun, Moon, Mercury in Sagittarius is in the 0-hour station unseen on the opposite side of the planet. Venus unseen 8 PM station (20 O'clock). Saturn at 8 AM station and Mars in the 10 AM station are visible rising east to the left. Jupiter visible is setting west to the right in the 4 PM station. Alderbaran visible is setting to the right in the 2 PM station. As Gemini is in 180-degree opposition to Sagittarius it would therefore be overhead on the "Mid-Heaven" the two big stars would be Sirius at 19 and Pollux in 28 Gemini. Good luck love thank you amen Om, Count Gramalkin



\* \* \*

# “Sidereal Horoscopes”

By

Count Gramalkin

\*

Western Sidereal Astrology Zodiacal Fixed Zodiac Professional Astrologer  
Spiritual Evolution Self Realization Truth Seeker Disciple - Truth Changes Not

San Francisco School of Sidereal Astrology Intrinsic Values of the Planets Technique Delineation

<http://www.countgramalkin.com> 1 877 322 7238 Toll Free Order Numger +Fax CountGramalkin@CountGramalkin.Com

\*

## "GMT to RAMC Astrological Mathematics"

\*

### Longitude Time RAMC Technique of Horoscope Arc Math v4.24.12

\*\*

Once you have Greenwich Mean Time (GMT) all charts are basically the same.

\*

Natal Horoscope GMT = clock time on a twenty-four hour clock plus or minus time zone plus west longitude east minus.

\*

Longitude Time is longitude converted to time then + or - the opposite of the GMT or west minus, east plus. If GMT were twenty-four hour clock time + time zone it would be RAMCG - longitude time = RAMC. GMT = twenty-four hour clock time - time zone it would be RAMCG + longitude time = RAMC. Longitude time is commonly given in longitude and latitude books.

South latitude plus the RAMC 12 hours and put the Midheaven on the Nadir from Table of Houses.

The increment of the GMT is the GMT% of 3':56" or 236.55536". Startime = Sidereal Time.

The longitude time modus operandi for computing RAMC which is the number one looks up in the table of houses.

\*

### GMT to RAMC

GMT

+ Increment of GMT

+ Startime

= RAMCG = Right Ascension Medium Coli Greenwich

+or- Longitude Time

= RAMC = Campanus Table of Houses @ Latitude

"The Progressed Constant" (not for Solar Return)

Event GMT

+ GMT Inc.

= GMT + Inc

+or- Longitude Time

= Progressed Constant

+ Sidereal Time@Progressed Date

= RAMC @ Progressed Date

### Base Six Arc Math

\*

Good to know the 40 4040 4000 technique for adding and subtracting in arc or time with a regular four function calculator.

: :40"

In Arc and Time math the minutes and seconds column turns over at 6 rather than 10 = 3°:59':59".

:40':40"

:40':00"

The rule is when adding or subtracting arc in the base six column if the answer is not a 1 to 5 or two natural base six zeros or is two base six fives with a carry one 40, 4040, or 4000 it as needed. Plus when adding minus when subtracting (if minuend base six columns are smaller than the subtrahend) and it will convert the answer to base six arc. +or- 40 for seconds, 4040 for minutes and seconds, 4000 for minutes. Must be done for each set of numbers rather than a cumulative adjustment.

\*

00°:03':48"

00°:00':03" The : are not on the calculator.

12°:56':44"

+ 00°:02':24"

+ 00°:00':06" Two natural base six zeros.

+ 11°:57':33" Two base six fives with a carry one.

= 00°:05':72"

= 00°:00':09" No correction needed.

23°:13':77"

+ :40"

= 00°:06':12"

+ 00°:40':40"

= 24°:54':17"

\* \* \*



## Astrological Mathematics

All modern day Astrological math, meaning the twentieth and at the turn of the twenty-first century, uses this same basic modus operandi when one is just interpolating between given figures in a book, Planet motion verses time of day and such. Arc into time and time to arc is real common. The basic formula concept of percent or ratio proportion interpolation (all right you guys cut out that brain lock this stuff are simple). Using a four-function calculator convert the arc and time to total seconds do all math convert answer back to time or arc.

This is the basic formula concept. Overall travel into travel to equals percent times scale of case equals increment of correction that plus or minus scale of case baseline equals answer. Example: time of day divided by 24 hours equals "Travel To" percent times the "Overall Travel" 24 hour planet motion between two given book baselines equals correction increment book baseline plus or minus increment equals answer.

In this example the Travel To = the distance from the Baseline to the Variable (time). The Overall Travel = the distance between the two Given Coordinates in the book on either side of the Variable (arc). Travel To divided by Overall Travel = Inc %. The Scale at hand is the Arc between the Given Coordinates in the book. Inc % times the Scale = Inc. Inc plus Baseline (lowest given book coordinate) equal Answer.

$$\begin{array}{r}
 \text{Travel To} \\
 \hline
 \text{Overall Travel}
 \end{array}
 = \text{Increment \%}$$

$$\text{Increment \%} \times \text{Scale (of query)} = \text{Increment of Correction (Inc)}$$

$$\begin{array}{r}
 \text{Baseline of Case} \\
 +\text{or- Increment of Correction} \\
 \hline
 \end{array}
 = \text{Answer}$$

$$\begin{array}{r}
 \text{Travel To} = 12 \text{ Hours Greenwich Mean Time} \\
 \hline
 \text{Overall Travel} = 24 \text{ hour in a day}
 \end{array}
 = \text{GMT Increment .5\%}$$

$$\begin{array}{r}
 \text{Book Baseline \#2} = 1^\circ \text{ degrees Sun in Aries} \\
 \text{Book Baseline \#1} = 0^\circ \text{ degrees Sun in Aries} \\
 \hline
 \text{Overall Travel} = 1^\circ \text{ degree}
 \end{array}$$

$$\begin{array}{r}
 \text{GMT Increment \% (=Time) x Scale (of query = Arc) = Arc Increment of Correction (Inc)} \\
 1^\circ:0' \text{ Degree Overall Travel} \\
 \times .5\% \text{ Increment of Correction} \\
 \hline
 = :30' \text{ Minutes Correction Increment}
 \end{array}$$

$$\begin{array}{r}
 0^\circ:00' \text{ Degrees Aries Baseline \#1} \\
 +0^\circ:30' \text{ Minutes Increment of Correction (+or- Baseline depending on case at hand)} \\
 \hline
 = 0^\circ:30' \text{ Minutes} = \text{Answer} = \text{Sun } 0^\circ \text{ Aries } 30':00''
 \end{array}$$

\*\*\*\*\*Convert Arc and Time to and from Decimal\*\*\*\*\*

Time or arc into total seconds = Hours or Degrees x 60 + minutes x 60 + Seconds = total Seconds divided by 86400" (= total seconds in 24 hours) or by 1296000" (= total seconds in 360 Degrees) = Increment of Correction %. To convert total seconds to arc or time: Note and subtract decimal of whole seconds. Total whole seconds divide by 60 = Whole minutes with a decimal that x60 = total seconds. Whole minutes divide by 60 = whole degrees and a decimal that x60 = whole minutes. Example: Time = 6h:13':42" = 6hx60 = 360' +13' = 373'x60 = 22380" +42" = 22422" = Total Seconds divide by 86400" (time) = .2595138% =Time x 1296000" arc = 336329.88" ARC -.88" (note decimal remainder) = 336329" whole seconds divide by 60 = 5605.4833' (.4833' x 60 = 29' note whole seconds). 5605' Whole Minutes and 29". 5605' divided by 60 = 93.416666 degrees and a decimal of whole minutes (Note degrees). .416666' X 60 = 25' WHOLE MINUTES.

00°:00':00.88" = Decimal Remainder of Whole Seconds.

+00°:00':29.00" = Whole Seconds.

+93°:00':00.00" = Whole Degrees

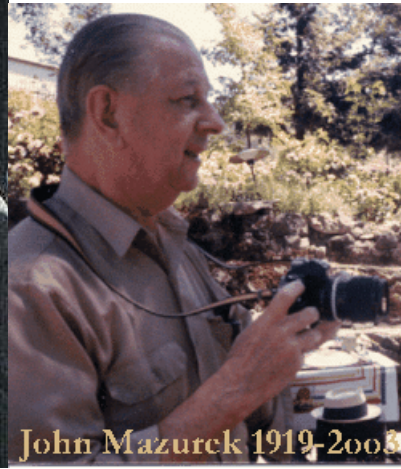
+00°:25':00.00" = Whole Minutes

=93°:25'29.88" of Arc (Do NOT use the whole degree with cumulative decimal minutes and seconds technique = big error fast.)

Angels can fly because they take themselves lightly Good luck love thank you amen Om, The Reverend Count Gramalkin

\*\*\*\*\*

Cyril Fagan (1896-1970)



John Mazurek 1919-2003

By Fagan out of Mazurek



\*\*\*

The San Francisco School of Sidereal Astrology Director  
“REVEREND PROFESSOR JOHN MAZUREK'S  
ARABIC LUNAR MANSIONS REPORT”

By

# Count Gramalkin

Authors Note: It was after Mazurek wrote his pieces on Jesus and the Lunar Mansions that he finally proved the Hierarchical Rulers, Exaltation, Dignity & Fall, Detriment, Mutual Reception; eTc. are fallacies and Have ZERO Relevant Delineation Value In Work-A-Day-Astrology. (v4-24.12)

\*\*\*\*\*  
\*\*\*\*\*

\*\*\*

Mazurek Arabic Lunar Mansions = 12°:51' Each

\*

Taurus, Leo, Scorpio, Aquarius.  
(E.G. Moon from 0 degree to 12°:51').

Fixed Cross Constellations

\*

Moon = 00°:00'

Saturn = 12°:51'

Jupiter = 25°:43'

\*

Gemini, Virgo, Sagittarius, Pisces.

Mutable Cross Constellations

\*

Mars = 8°:34'

Sun = 21°:26'

\*\*\*

Cancer, Libra, Capricorn, Aries.

Cardinal Cross Constellations

\*

Venus = 4°:17'

Mercury = 17°:08'

\*\*\*\*\*  
\*\*\*\*\*

## Forward

This paper, An Introduction to the Lunar Mansions, was originally given as a lecture on September 7, 1974, by John Mazurek, Director of the San Francisco School of Sidereal Astrology, and has subsequently been adapted for publication.

As my students well know, the basis of the philosophy and teaching of the San Francisco School of Sidereal Astrology is the work and investigation of Cyril Fagan, the father of Sidereal Astrology. In this paper I do not attempt to go into the past history and researches of Cyril Fagan.\* My purpose is to present a brief introduction to the delineation technique of the Lunar Mansions.

I give thanks to all the people who have been prodding me for all these years, specially the students, and the many others who have lent a hand to this work. I thank you all.

## The Lunar Mansions

The Lunar Mansions represent some of man's early researches into astronomy. Classical history regarding astronomy and astrology tells us that man was most concerned with phases of the Moon and, of course, the Moon's path and its conjunction with "fixed" stars. These were visual events which took place every evening.

Over the years I had read a great deal about the Lunar Mansions, but my thirst for knowledge was left unfulfilled. Then one day when Cyril and I were out driving, I mentioned I could find nothing worthwhile about the Lunar Mansions that we could use in our delineatory technique. And so he said to me, "Well, John, try this...try the Chaldean order of the planets and do your researches along those lines." Well, more was said. As time passed, I figured Cyril would do something on the Lunar Mansions, but no, apparently he had left it up to me, which I proceeded to do.

Now, the average daily motion of the Moon is  $12^{\circ} 51'$ . But where in the zodiac of constellations should we begin? We know that the Moon is exalted in Taurus, and we know that the ancient zodiac actually started with the  $0^{\circ}$  Taurus, so it seemed natural to begin there, using the Chaldean order of planets which started with the Moon then Saturn, Jupiter, Mars, Sun, Venus and Mercury. Thus the Lunar Mansions start from the  $0^{\circ}$  Taurus

and have a domain of  $12^{\circ} 51'$  there by dividing the ecliptic into twenty-eight equal parts.

## The Technique of Delineation

First of all, then, let us look at how these Lunar Mansions are used in natal astrology. In every constellation, we have three distinct groups (i.e., three Lunar Mansions) to work with. For example, taking the first  $12^{\circ} 51'$  of the constellation of Taurus, we make believe the ruler of the constellation (here Venus) is conjunction the ruler of the first Lunar Mansion (here the Moon). The second Lunar Mansion gives us Venus/Saturn conjunction and the third a Venus/Jupiter conjunction. This, then, is the basic technique of delineation used throughout the entire scheme.

The technique of delineation may be used in natal astrology, solar returns, lunar returns, monthly solar returns, secondary progressions (using the traditional day-for-a-year), the progressed primary angles, and last but not least, mundane astrology. Lunar Mansions are a great boon to the secondary progressions, because here is where we find the technique and its axiom, the 13-year cycle, so valid in our earthly existence. They are also worth their weight in gold in the mundane field, or, if you please, in the transits. The author has proven this technique to his satisfaction in all such areas of astrology, especially the stock market and horse-racing aspects of Sidereal Astrology.

So here we have a wonderful tool at our disposal which adds another dimension to Sidereal Astrology. As with most delineation, if you understand the principle in natal astrology, you can apply it to many other areas. I urge you all to study this simple technique.

## The Lunar Mansions of the Constellation of Taurus

$00^{\circ} 00'$	- $12^{\circ} 51'$	Lunar Mansion of the Moon
$12 51$	- $25 43$	Lunar Mansion of Saturn
$25 43$	- $29 59$	Lunar Mansion of Jupiter

The Taurean is ruled by Venus, the planet of ease, love and peace, which gives the native and artistic, easy-going, and even somewhat lazy nature.

In the first Lunar Mansion of Taurus (Venus/Moon), we have an easy-going person, wanting love and affection, certainly musi-

cally and artistically inclined, and of course, non-violent.

In the second Lunar Mansion (Venus/Saturn) we find that the native will hold (since Venus represents love and affection and Saturn represents certain limitations on whatever it contacts). Venus/Saturn gives, from the psychological point of view, a person who tends to be masochistic, or who tends to do a lot of personal suffering - one who will give up and even sacrifice himself for others, especially his loved ones. As far as his love life is concerned, the native would be inclined to the conventional type affair. As to wearing apparel (since Venus has to do with clothing), the native would probably like second-hand clothes, as well as antiques and things of that nature. Additionally, here is where we find the person who is prone to be business-wise and business-oriented. †

The third Lunar Mansion is ruled by Jupiter (Venus/Jupiter). Our literature tells us that the Taureans are noted for their philanthropies, generosities, and here is where we find the people who are generous in the field of the arts. They will donate large sums of money or become actively involved themselves in this area, either directly or indirectly.

† It is interesting to note that nowhere in our sidereal texts do we have any indication that the Taurean is business-oriented, yet in my researches over the years, I have found many Taureans in the clothing business, in top managerial spots and in business generally. Only by looking at this Lunar Mansion does this aspect come to light.

#### The Lunar Mansions of the Constellation of Gemini

00° 00'	- 08° 34'	Lunar Mansion of Jupiter
08 34	- 21 26	Lunar Mansion of Mars
21 26	- 29 59	Lunar Mansion of the Sun

We know, of course, that Gemini is ruled by Mercury. Now Mercury is the planet of intellect (whereas the Sun is the planet of our basic intelligence). Thus the Mercury can digest a lot of intellectual information.

The first Lunar Mansion of Gemini is ruled by Jupiter (Mercury/Jupiter). These people are prone to discuss religion and philosophy; they are quite philosophically oriented. Of course, they excel in the field of teaching. We find that these people have a very good intellect; they can discuss a whole host of

subjects, even though perhaps at time superficially.

The second Lunar Mansion of Gemini is ruled by Mars (Mercury/Mars)‡, which gives the native mathematical ability, the love of personal combat, of sporting events - in short, an aggressive nature. Here is also where we find the thief, if you please, because Mercury in combination with Mars denotes a tendency toward dishonesty, and the mansion of Gemini does promote some noted con artists.

The third Lunar Mansion of Gemini is ruled by the Sun (Mercury/Sun). Again, note that Mercury is the planet of intellect and the Sun the planet of our basic intelligence, here we have an exceptionally brilliant person. Over the years a lot of superficiality has attributed to the Geminians (and attribute more appropriate to the first Lunar Mansion of Gemini), but in this mansion we find the true scholars and researchers. These people have a lot of God-given common sense, and can excel in the publishing field.

‡ The traditional interpretation of this constellation tells us that Geminians are the irreligious, yet I have come across many people with strong Gemini vibrations who were philosophically inclined. We know, however, that a conjunction of Mercury/Mars gives one a very sharp, critical and argumentative mind, hence the second Lunar Mansion of Gemini more aptly describes the irreligious, anti-religious aspect of the constellation.

#### The Lunar Mansions of the Constellation of Cancer

00° 00'	- 04° 17'	Lunar Mansion of the Sun
04 17	- 17 08	Lunar Mansion of Venus
17 08	- 29 59	Lunar Mansion of Mercury

Since we know that Cancer is ruled by the Moon, we know beyond a shadow of doubt that the typical Cancerian is very much concerned with his domestic environment. This native is sentimental, artistic, literary and political.

In the first Lunar Mansion of Cancer (Moon/Sun), we have a person who is politically-oriented, inclined to nepotism, has a great sex nature, and who is quite easy going and emotional.

In the second Lunar Mansion of Cancer is ruled by Venus (Moon/Venus), here we come to the sphere of the musician. I have many Cancerian friends who are very musical, and yet not all Cancerians are musically inclined. Here too, is where we find the Beau Brummels and the Fancy Dans which like

clothes, or who may even be addicted to clothes.

the third Lunar Mansion of Cancer is ruled by Mercury (Moon/Mercury). this mansion is noted for its great story tellers, writers, and the people or politicians who have great oratorical ability. Since the Moon is the planet par excellence of our imagination, in this Lunar Mansion particularly will we find some great fiction writers.

#### The Lunar Mansions of the Constellation of Leo

00° 00' - 12° 51' Lunar Mansion of the Moon  
12 51 - 25 43 Lunar Mansion of Saturn  
25 43 - 29 59 Lunar Mansion of Jupiter

Since Leo is ruled by the Sun, we know to begin with that Leonians are very egotistical because the Sun is the planet of our ego. It is also the planet of our basic intelligence (whereas the Moon rules our moods). The Leonian natives are very generous, yet by the same token they can be dogmatic, bombastic and egotistical. Remember, however, that being a man of great ego is one thing and being stern and dogmatic is another.

The first Lunar Mansion of Leo is ruled by the Moon (Sun/Moon). Here is the politician par excellence - the person having a great deal of ego, or in other words, one who possesses a great love for himself. The basic quality of this Lunar Mansion Leonian is self-confidence.

The second Lunar Mansion of Leo is ruled by Saturn (Sun/Saturn). Here we find people who are quite dogmatic, straightforward, exacting and demanding, and they make no bones about it. They're right and the other guy is out in left field somewhere!

The third Lunar Mansion of Leo is ruled by Jupiter (Sun/Jupiter). Again, here we find people who are inclined to religion and philosophy, but to such an extent engaged on a vocation such as minister or priest. These natives not only have a strong affinity for religion and/or philosophy, but strangely enough, for gambling, because Jupiter denotes the gambling instinct.

#### The Lunar Mansions of the Constellation of Virgo

00° 00' - 08° 34' Lunar Mansion of Jupiter  
08 34 - 21 26 Lunar Mansion of Mars  
21 26 - 29 59 Lunar Mansion of the Sun

The Constellation of Virgo is ruled by Mercury. The Virgo native is inclined to be analytical, intellectual, and certainly the born investigator.

The first Lunar Mansion of Virgo is ruled by Jupiter (Mercury/Jupiter). We have here a person who tends to intellectually mingle religion and philosophy - one who can combine the orthodox and unorthodox. In this mansion the native likes to philosophize.

The second Lunar Mansion of Virgo is ruled by Mars (Mercury/Mars). Here we find the people who ha a particular knack for mathematics. This configuration also gives one a great love of personal combat - the personal challenge. Thus these natives are aptly fit to give their time and effort to the armed forces.†† And, of course, the Mercury/Mars aspect denotes a tendency to dishonesty.

The third Lunar Mansion is ruled by the Sun (Mercury/Sun). As the Sun rules our basic intelligence and Mercury our intellect, this native is endowed with common sense and an impressive I.Q., rounding out as an extremely capable and exceptionally intelligent person.

†† Now we are told that the constellation of Virgo is the sign of service - not much service as someone's servant, but rather service as in the armed forces, i.e., service to the country rather than to the individual. Obviously, the Virgoan who likes military service, or who is athletically inclined, will fall under this Lunar mansion.

#### The Lunar Mansions of the Constellation of Libra

00° 00' - 04° 17' Lunar Mansion of the Sun  
04 17 - 17 08 Lunar Mansion of Venus  
17 08 - 29 59 Lunar Mansion of Mercury

The constellation of Libra is ruled by Venus. we know that this constellation is not known for its mental, intellectual powers; in other words, it does not produce the great and researchers that the constellations of Gemini and Virgo produce. The native Libran is basically easy-going, rather absent-minded and rather lazy.\* Of all the constellations, however, Libra is the most artistically inclined.

The first Lunar Mansion of Libra is ruled by the Sun (Venus/Sun). Since the Sun rules our basic intelligence, here we find one who is mentally lazy - one who fluffs the matter off on someone else; that is the truth of the matter!

In the second Lunar Mansion of Libra (Venus/Venus), we find the totally lazy

people. Furthermore, here are the people who can become obese (the Venus ruled are noted for their obesity), who tend to take life easy - the persons really fond of the niceties and luxuries of life, even though they may have a "champagne taste and beer budget".

The third Lunar Mansion of Libra is ruled by Mercury (Venus/Mercury). This Lunar Mansion well explains the traditional notion, that the native of the constellation of Libra is noted for their administrative qualities. They can systematize and make work easier.

\* It is interesting to note that if we use the scheme of exaltation, Saturn is supposed to be exalted in the 21st degree of Libra. Saturn natives tend to be "tight" minded, and Libra natives "absent" minded. But do we call it mental laziness; these people are jus plain mentally lazy. Absent-mindedness comes from another aspect and not from the constellation of Libra itself.

#### The Lunar Mansions of the Constellation of Scorpio

00° 00' - 12° 51' Lunar Mansion of the Moon  
 12 51 - 25 43 Lunar Mansion of Saturn  
 25 43 - 29 59 Lunar Mansion of Jupiter

We know that all the twelve zodiacal constellations, the constellation of Scorpio, ruled by Pluto, is the most accident-prone. And, we know that these people are the most combative and argumentive. Some of them can be very difficult to live with!

The first Lunar Mansion of Scorpio is ruled by the Moon (Pluto/Moon). These people are very combative but in a very diplomatic way. They are aggressive is such a way that you can stomach their rebelliousness and criticism.

The second Lunar Mansion is ruled by Saturn (Pluto/Saturn). Here you find the people who are actually accident-prone, and here you find the really critical, combative and generally disagreeable people - in short, natives who are stern, argumentative and provocative, being again as we say, very accident-prone. The bully aspect of Scorpio is well explained by this Lunar Mansion configuration.

Incidentally, when we talk about poisons, please note that the Scorpio people are known for their ability to use poisons (Pluto rules poisons). The second Lunar Mansion of Scorpio is peculiarly suited here.

The third Lunar Mansion of Scorpio, ruled by Jupiter (Pluto/Jupiter), would give one the ability and liking for metaphysics.

Generally we see here the love of metaphysics, occultism, philosophy and religion.

#### The Lunar Mansions of the Constellation of Sagittarius

00° 00' - 08° 34' Lunar Mansion of Jupiter  
 08 34 - 21 26 Lunar Mansion of Mars  
 21 26 - 29 59 Lunar Mansion of the Sun

The constellation of Sagittarius is ruled by Jupiter, and we know that the native of this constellation love status; they are very much concerned with their station in life, with philosophy, medicine, horse racing, animal husbandry, religion, and fields involving prestige or status.

The first Lunar Mansion of Sagittarius is ruled by Jupiter (Jupiter/Jupiter). Here we have a person who is concerned with religion, philosophy, status, and of course, with nature.

The second Lunar Mansion of Sagittarius is ruled by Mars (Jupiter/Mars) denotes the surgeon, the doctor and the dogmatic, bombastic or self-righteous preacher. Also, herein we find the gambler and one who deals with horses - racing, breeding, animal husbandry - and all of the lower elements, so to speak, of the noble constellation of Sagittarius.

The third Lunar Mansion of Sagittarius, ruled by the Sun (Jupiter/sun), we find the people who aptly fit to become lawyers, professors, government workers -all people who are aware of and appreciate the status symbol. Because their status in life is very important to them, these people are prone to lean to the professional classes as far as their vocation is concerned.

#### The Lunar Mansions of the Constellation of Capricorn

00° 00' - 04° 17' Lunar Mansion of the Sun  
 04 17 - 17 08 Lunar Mansion of Venus  
 17 08 - 29 59 Lunar Mansion of Mercury

Capricornian people are quiet, lean to conformity and traditional side of life, and are somewhat skeptical, suspicious and orthodox. Yet we find some fine administrators, writers, musicians and politicians in this constellation. On the other hand, the constellation of Capricorn has produced some of the world's notable tyrants.

The first Lunar Mansion of Capricorn is ruled by the Sun (Saturn/Sun). Here we find the tyrant and the politician. As to be

expected, we find the person a conformist, a strict and rigid disciplinarian, suspicious, practical, economical and demanding. The businessman, if you please, and the farmer are typical of this Lunar Mansion of Capricorn.

The second lunar mansion, ruled by Venus (Saturn/Venus), gives a native who is inclined to music. As you may know, some of the greatest classical musicians are Capricornians, born with the Sun, Moon or Ascendant in this constellation and this lunar mansion. As far as their love life is concerned, these people are very conventional and quite conforming along these lines. As to clothes, they may follow an austerity program in their mode of dress.

The third Lunar Mansion of Capricorn is ruled by Mercury (Saturn/Mercury), giving people who are traditionalists and fundamentalists. This mansion produces the statistician and the research worker - the people who do fine economical work. Such natives have a knack of simplifying long, complex formulas or whatever data may be given them. Incidentally, here is where you will also find some wonderfully concise literary people.

#### The Lunar Mansion of the Constellation of Aquarius

00° 00' - 12° 51' Lunar Mansion of the Moon  
 12 51 - 25 43 Lunar Mansion of Saturn  
 25 43 - 29 59 Lunar Mansion of Jupiter

The constellation of Aquarius is ruled by Uranus. Aquarians are mainly noted for their eccentricity, originality, inventiveness and philosophy.

The first Lunar Mansion of Aquarius (Uranus/Moon) gives a person who is original unique and easy-going (or just plain lazy). Such a person may have a somewhat unreliable nature since he tends to postpone the situation until the very last minute. Very eccentric, unusual and altruistic people are found in this mansion.

The second Lunar Mansion of Aquarius, ruled by Saturn (Uranus/Saturn), produces natives who try to upset the status-quo; they are anti-conformity and anti-tradition.\* These natives are noted for their ability to invent gadgets (so they can spend more time doing what to do instead of putting in a lot of time on work). Additionally, here we find the native prone to fits of depression and remorse.

In the third Lunar mansion of Aquarius

(Uranus/Jupiter), we find the people who are inclined to philosophy (perhaps) more so than religion as such and medicine. And, of course, this mansion denotes the gambling aspect.

\* The ancients attributed the rulership of Aquarius to Saturn; literature describes the Aquarian as anti-social or anti-conformist.

#### The Lunar Mansions of the Constellation of Pisces

00° 00' - 08° 34' Lunar Mansion of Jupiter  
 08 34 - 21 26 Lunar Mansion of Mars  
 21 26 - 29 59 Lunar Mansion of the Sun

The constellation of Pisces is ruled by Neptune.

The first Lunar Mansion of Pisces is ruled by Jupiter (Neptune/Jupiter). Here we find the dreamer, or if you please, the schemer. Since Jupiter denotes the gambling instinct, these people may have ambitious plans to make money the easy way, as in the stock market. It also produces the con artist - one who has great plans to fleece the people. On the other hand, these natives are prone to the religious or we might say the mystical side of life.

The second Lunar mansion of Pisces is ruled by Mars (Neptune/Mars). Here we find, some of the most sadistic and vicious people. Neptune/Mars gives a mean streak; often such natives take sheer delight in tormenting someone.

In the third Lunar mansion of Pisces, ruled by the Sun (Neptune/Sun), we find the person who is especially drawn to the religious side of life, as well as to the arts - the theatre, music, entertainment - in short, all the finer, nobler aspects of Neptune. Here we find the actor, musician, conductor, and impersonator.

#### The Lunar Mansions of the Constellation of Aries

00° 00' - 04° 17' Lunar Mansion of the Sun  
 04 17 - 17 08 Lunar Mansion of Venus  
 17 08 - 29 59 Lunar Mansion Of Mercury

Last but not least, is the constellation of Aries, ruled by Mars. The Aries people are pioneers. This constellation is that of the capitalist, the tyrant, the lover and, of course, the soldier.

In the first Lunar mansion of Aries

(Mars/Sun), we find the politician, the soldier, and the tyrant - in a word, the one who is constantly in love with himself.

In the second Lunar Mansion of Aries (Mars/Venus) gives a sex-oriented person who takes great delight in his conquests. Of course, we know Ariens are quite passionate people; a Mars/Venus aspect would indicate excessive zeal when it comes to passion or amour, so this person might lack discretion in choice of love partners.

Finally, the third Lunar Mansion of Ares (Mars/Mercury) gives the businessman, the capitalist and the pioneer. Business and intellectual pursuits, as well as organizational ability, would be attributed to this lunar mansion. If there is any dishonesty in the constellation of Aries, again we find it with this configuration of Mars/Mercury, along with the ability to argue and nit-pick.

### **The Progressed Chart**

When we talk about the progressed chart, we are talking about the simple secondary progressions of day-for-a-year - the traditional tropical technique of progression.

#### **The Sun**

The progressed Sun moves along approximately one degree a day; thus one day equals one year, so that after thirteen years the native will have gone through a particular progressed, or solar, cycle. For example, if the Sun were in the constellation of Taurus and in the Lunar Mansion of Saturn at birth, the first part of one's life would be influenced by Saturn, the next thirteen years by Jupiter, the next by Mars and so on. Since the Sun is akin to vitality as well as basic intelligence, if the progressed Sun were to enter the Lunar mansion of Saturn, the physical body and vitality would likely suffer during that thirteen-year period.

#### **Mercury**

If the native's progressed Mercury were in the degree of a constellation ruled by the Lunar Mansion of Saturn, during that time he would find himself busily at work, as Mercury is the planet of work. He may become quite involved with his vocation, working like a dog, - probably getting little credit for his work. If he should be writing his publications might not be accepted. this definitely not a period to go into expanded or new kinds

of business ventures. We know that the best time to go into new business ventures, publishing or intellectual fields is when the progressed Mercury is in the Lunar Mansions ruled by Jupiter, Venus, the Sun or Mercury.

#### **Venus**

Now let's take a look at the progressed planet of Venus. Let's say Venus has progressed into the Lunar Mansion of Saturn. Here we find that the native will have romantic problems - loss of loved ones, lack of friendship - in short, a certain coldness or aloofness will come into his life. This may not be so bad when one is young, but as one gets older it can indicate quite a different period in life.

#### **The Moon**

The Moon's daily motion is approximately twelve degrees; applying the day-for-a-year principle gives the same motion for one year. Thus the Moon moves from one lunar mansion to another approximately every year. If the native's progressed Moon were in the Lunar Mansion of Saturn, he could expect a difficult year emotionally; he'll certainly have his share of problems. As the Moon rules the carnivorous appetites, the chances are that with the Moon in the Lunar Mansion of Saturn the native's sexual desires will be diminished; he'll wonder what the hell is the matter! Only with the passage of time, when the progressed Moon moves into the Lunar Mansion of Jupiter, will the sexual appetites change accordingly.

#### **Mars**

Progressed Mars is the Lunar Mansion of the Sun is generally good; in the Lunar Mansion of Venus, good; in the Lunar Mansion of Saturn quite difficult when it comes to accidents. This last configuration indicates a very negative period, one in which the native can commit some terrible crimes which he ordinarily wouldn't commit.

#### **Jupiter, Saturn, Uranus, Neptune and Pluto**

The outer planets move so slowly when it come to secondary progressions that this technique does not really shed much light on the matter.

## Primary Angles

Most astrologers know the simple technique of progressing the primary angles: the midheaven moves forward approximately one degree a year and the ascendant one degree a year, more or less. Of course, the midheaven has domain over one's mind, mentality and the job, whereas the ascendant has domain over the physical body. The progressed midheaven were in the Lunar Mansion of Saturn, for example, the native would find learning perhaps difficult, and he could expect difficulties with his job. If the ascendant were to progress into the Lunar Mansion of Saturn, he would likely have problems physically. The thing to remember is that these cycles are thirteen years long, which in the case of Saturn can amount to a plague of very lean years!

## **Mundane Astrology**

The next topic is mundane astrology or, if you please, the transits, especially transits of the heavy planets - Saturn, Uranus, Neptune and Pluto - which stay in the same constellation for years. by using the basic technique of delineation the student can gain real insight into what is going on in the mundane sphere. Consider the period for example, when transiting Pluto was in the Lunar Mansion of Jupiter (Jupiter rules the air; pluto is the planet of piracy). In that particular period we were plagued by air piracy, air mishaps and accidents. Now that Pluto is in the Lunar Mansion of Mars (1974) we very likely will see violence on a world-wide scale: explosions, accidents terrible tragedies concerning poisonings, for instance.

Transiting Neptune now in the Lunar Mansion of Saturn indicates much the same thing and extremely negative period. This configuration gives host to manic-depressive mentality, with great tragedies in the use of stimulants. Setbacks may occur in the area of the cinema.

To continue, if Mercury were in the Lunar Mansion influenced by Jupiter, the Populace in general would be subject to good news, whereby if transiting Mercury were in the Lunar Mansion of Mars, we could expect all kinds of accident or "hostile" news. Of course, a transiting Mercury occupying the Lunar mansion of Saturn would give depressing news - talk of business slump, or general news pessimism in the mundane press.

A conjunction of two or more transiting planets is vastly colored by what lunar mansion they occupy. If, for instance, we have a conjunction of the Moon and Sun in the Lunar Mansion of Saturn, we can look for a very depressing period, whereby these same luminaries conjunct in a lunar mansion that is intrinsically positive will certainly have positive effects. By the same token, vehicular accidents occur when transiting Uranus is in the Lunar Mansion of Mars along with transiting Mars, Saturn or Sun.

The student should also take particular notice when transiting planets move from one lunar mansion to another. For example, when transiting Mars is exactly in 12° 51' of Taurus, right on the cusp, some form of violence will occur. it seems that the cusps of the mansions are sensitive; I repeat, very sensitive. Thus when the transiting planets are conjunct these cusps, they become quite important, especially the slow-moving planets of Saturn, Uranus, Neptune and Pluto.

## **AFTERTHOUGHT**

It should be noted that the author in his research and experience has only skimmed the surface insofar as the lunar mansions are concerned. For instance, another subject we might well be advised to consider is medicine and the part of the body represented by the lunar mansions. Because there is still much research to be done, i am not ready at this time to say anything about the relationship of lunar mansions to the physical body.

Remember, Sidereal Astrology is still in its infancy. Cyril Fagan told me personally that I and my students have the sole task of seeking out and the reconstituting the knowledge that has been lost over the years due to ignorance and deception. So it is up to each and every one of us to uncover lost astrological truths. especially in the use of the lunar mansions. The universe is the limit. In other words, I have only put my foot in the door, and you as students and researchers have to open it and carry on from there. I have given, as far as I am concerned, the proof of my years of research in this publication on the lunar mansions.

Once again, my thanks to all those who are interested and supported the search for understanding and truth in the queen of Sciences.

\*\*\*\*\*

## Mazurek Arabic Lunar Mansions = 12°:51' Each

\*

### Fixed Constellations

*Taurus (=Venus), Leo (=Sun), Scorpio (=Pluto), Aquarius (=Uranus)*

*Moon Mansion = 00d:00m (Moon from 0 degree to 12°:51')*

*Saturn = 12°:51'*

*Jupiter = 25°:43'*

\*

### Mutable Constellation

*Gemini (=Mercury), Virgo (=Mercury), Sagittarius (=Jupiter), Pisces (=Neptune)*

*Mars = 8V:34'*

*Sun = 21°:26'*

\*

### Cardinal Constellations

*Cancer (=Moon), Libra (=Venus), Capricorn (=Saturn), Aries (=Mars)*

*Venus = 4°:17'*

*Mercury = 17°:08'*

\*

*The Approximate dates of the Lunar Mansions. Due to the "Leap Year" phenomena actual dates may vary and should be checked with an Ephemeris.*

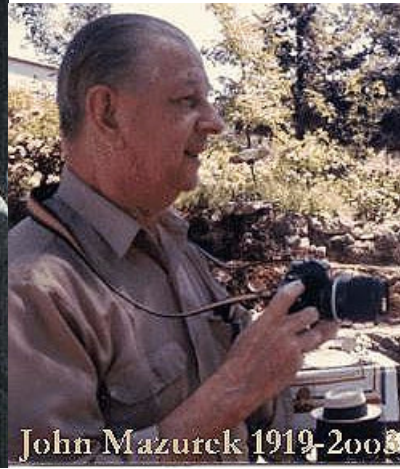
\*

<i>1/6 = Sun/Sagittarius</i>	<i>7/8 = Sun/Gemini</i>
<i>1/19 = Venus/Capricorn</i>	<i>7/22 = Venus/Cancer</i>
<i>1/31 = Mercury/Capricorn</i>	<i>8/4 = Mercury/Cancer</i>
<i>2/13 = Moon/Aquarius</i>	<i>8/17 = Moon/Leo</i>
<i>2/26 = Saturn/Aquarius</i>	<i>8/31 = Saturn/Leo</i>
<i>3/4 = Jupiter/Aquarius</i>	<i>9/13 = Jupiter/Leo</i>
<i>3/24 = Mars/Pisces</i>	<i>9/26 = Mars/Virgo</i>
<i>4/6 = Sun/Pisces</i>	<i>10/10 = Sun/Virgo</i>
<i>4/19 = Venus/Aries</i>	<i>10/23 = Venus/Libra</i>
<i>5/2 = Mercury/Aries</i>	<i>11/4 = Mercury/Libra</i>
<i>5/15 = Moon/Taurus</i>	<i>11/17 = Moon/Scorpio</i>
<i>5/27 = Saturn/Taurus</i>	<i>11/29 = Saturn/Scorpio</i>
<i>6/11 = Jupiter/Taurus</i>	<i>12/12 = Jupiter/Scorpio</i>
<i>6/24 = Mars/Gemini</i>	<i>12/25 = Mars/Sagittarius</i>

\*\*\*\*\*

\*\*\*\*\*

Cyril Fagan (1896-1970)



John Mazurek 1919-2003

By Fagan out of Mazurek

Western Sidereal Astrology Horoscope Example - Marilyn Monroe Natal Chart



\*\*\*

The San Francisco School of Sidereal Astrology  
Intrinsic Values of the Planets Technique of Delineation

**The Count Gramalkin.com Free eBooks Library**

By

**Count Gramalkin**

\*\*\*\*\*

\*\*\*

## "Sidereal Horoscopes"

By

Count Gramalkin

\*\*

Western Sidereal Astrology Zodiacal Fixed Zodiac Astrologer

Spiritual Evolution Self Realization Truth Seeker Disciple - Truth Changes Not

San Francisco School of Sidereal Astrology Intrinsic Values of the Planets Technique of Delineation

www.countgramalkin.com -1 877 322 7238 Toll Free Order Number +fax - CountGramalkin@CountGramalkin.Com

\*4-24.12\*

## "The Count Gramalkin.com Free eBooks Library"

The Mystery of Life - How to Better Read and Predict It - What to Do About It

The Old Man always said that if you can't put it in a pamphlet you don't understand the situation.

\*\*

*Announcing the <http://www.countgramalkin.com> Free eBooks Library spiritual evolution astrology horoscopes and tarot techniques give-away with the Cyril Fagan - John Mazurek - Count Gramalkin San Francisco School of Sidereal Astrology Technique of Delineation. Learn foretelling the future tell one own fortune new edition eBooks now given away with zero spyware spam virus. Open the site then click on the Book Information and Stars Equals Cards tabs. The essence synthesis resolution of the cumulative world history of astrological research by millions of people from many civilizations over the last 10,000 years with the truth and falsehood sorted out of it in an absolute proof cash on the line ground of being.*

\*\*

### The Count Gramalkin Fortune Teller Manual

The Fortune Teller Manual Teaches you how to do a professional quality reading and pretty much covers the subject from "always ask for grace before doing anything transcendental" to "compassionate yet detached". Current Edition = 56 pages = 17 pages Graphics and Charts - 39 pages of Text available at this URL [http://www.starmanpress.com/printable\\_versions/tell\\_your\\_own\\_fortune\\_by\\_count\\_gramalkin.pdf](http://www.starmanpress.com/printable_versions/tell_your_own_fortune_by_count_gramalkin.pdf)

\*\*

### The Count Gramalkin Tarot Manual

The Tarot Manual concentrates specifically on learning how to do a Tarot Card Reading. The "Tarot Manual" will get anyone started and make an astrologer or Tarot Reader or anyone else who understands the intrinsic values of the planets a fabulous Tarot Reader overnight. Current Edition = 25 Pages - 6 Pages of Graphics and Charts - 19 Pages of Text available at this URL

[http://www.loveadvice.biz/printable\\_versions/introduction\\_to\\_tarot\\_by\\_count\\_gramalkin.pdf](http://www.loveadvice.biz/printable_versions/introduction_to_tarot_by_count_gramalkin.pdf)

\*\*

### Astrology Manifesto by Count Gramalkin

My masterpiece so to speak is written for astrologers. The layman would need quite a bit of definitions to understand it. Astrology Manifesto is the combined current editions of the manifesto article and the San Francisco School of Sidereal Astrology Technique - Current Edition = 49 pages - 17 pages of charts and illustrations - 37 pages of text with that nicely resolves the world history of astrological research with the truth and fallacy proven out of it in an empirical research absolute proof ground of being (money) that ought to scare you a little is available at

this URL. [http://www.gramalkin.com/printable\\_versions/astrology\\_manifesto\\_by\\_count\\_gramalkin\\_sidereal\\_astrologer.pdf](http://www.gramalkin.com/printable_versions/astrology_manifesto_by_count_gramalkin_sidereal_astrologer.pdf)

\*\*

### The San Francisco School of Sidereal Astrology Intrinsic Values of the Planets Technique of Delineation

by

Count Gramalkin

The entirety of the essence of the Cyril Fagan of Dublin, Ireland his chosen heir the Reverend Professor John Mazurek director of the San Francisco School of Sidereal Astrology Count Gramalkin legacy lineage. The contents include The San Francisco School of Sidereal Astrology Intrinsic Values of The Planets Technique of Delineation as applied to horoscopes and cast lots such as tarot with a bit of explanation elucidation that teaches a lot about the mystery of life, how to read and predict it and what to do about it. The Current Edition = 66 Pages - 15 pages of Graphics and Charts - 51 Pages of Text. Written for all layman or professional. Available at this URL.

[http://www.westernsiderealastrology.info/printable\\_versions/sidereal\\_astrology.pdf](http://www.westernsiderealastrology.info/printable_versions/sidereal_astrology.pdf)

\*\*

\*\*\*

## The San Francisco School of Sidereal Astrology Technique

by

Count Gramalkin

This quick reference version is the heart and soul, the nuts and bolts, just The San Francisco School of Sidereal Astrology Technique of Delineation by its self without explanation. Current Edition = 42 pages, 15 pages of charts and illustrations with 27 pages of text written for astrologers. Available at this URL [http://www.siderealastrology.net/printable\\_versions/sf\\_school\\_sidereal\\_astrology\\_technique\\_by\\_count\\_gramalkin.pdf](http://www.siderealastrology.net/printable_versions/sf_school_sidereal_astrology_technique_by_count_gramalkin.pdf)

\*\*

## Marilyn Monroe Western Sidereal Fixed Zodiac Natal Birth Horoscope

In The San Francisco School of Sidereal Astrology Technique

By

Count Gramalkin

Done Geographically - With the Campanus Table of Houses - Octoscope Watch and East Point Angles - SolFire Ephemeride - Arabic Lunar Mansions - Major Fixed Star Aspects - Constellation Brakes - Speculative - Current Edition = 43 Pages - 21 Pages of Graphics and Charts - 32 Pages of Text [http://www.loveadvice.biz/printable\\_versions/marilyn\\_monroe\\_sidereal\\_horoscope\\_by\\_count\\_gramalkin.pdf](http://www.loveadvice.biz/printable_versions/marilyn_monroe_sidereal_horoscope_by_count_gramalkin.pdf)

\*\*

## The Count Gramalkin "Sidereal Zodiac Horoscopes Chronicles" Current Edition

by

Count Gramalkin

This piece is a collection of articles containing information that is mostly included in some form or other elsewhere on [www.countgramalkin.com](http://www.countgramalkin.com) all together in one place. It is mostly just me prattling on elucidating explanation about the mystery of life how to read and predict it and what to do about it. The Current Edition = 114 pages - 21 pages Graphics - 88 pages of text Available at this URL [http://www.solunars.info/printable\\_versions/the\\_count\\_gramalkin\\_sidereal\\_horoscope\\_chronicles.pdf](http://www.solunars.info/printable_versions/the_count_gramalkin_sidereal_horoscope_chronicles.pdf)

\*\*

## India Astrology

by

Count Gramalkin

There is often a bit of query about the India astrology so here is The San Francisco School of Sidereal Astrology report. Current Edition = 46 Pages - 17 Pages of Graphics and Charts - 29 Pages of Text [http://www.siderealzodiac.info/printable\\_versions/india\\_astrology\\_by\\_count\\_gramalkin.pdf](http://www.siderealzodiac.info/printable_versions/india_astrology_by_count_gramalkin.pdf)

\*\*

## The Arabic Lunar Mansions

by

Reverend Professor John Mazurek

The San Francisco School of Sidereal Astrology Director Cyril Fagan's Chosen Heir The Reverend Professor John Mazurek's Arabic Lunar Mansions Report. Current Edition = 47 Pages - 17 Pages of Graphics and Charts - 30 Pages of Text available at this is URL [http://www.siderealzodiac.info/printable\\_versions/mazureks\\_arabic\\_lunar\\_mansions.pdf](http://www.siderealzodiac.info/printable_versions/mazureks_arabic_lunar_mansions.pdf)

\*\*

## The Jesus Nativity Horoscope

by

Reverend Professor John Mazurek

The "Jesus of Nazareth Nativity" by the Reverend Professor John Mazurek is presented as an excellent example of the San Francisco School of Sidereal Astrology Technique of Delineation. Current Edition = 63 Pages - 20 Pages of Graphics and Charts - 43 Pages of Text is available at this URL [http://www.eclipses.biz/printable\\_versions/jesus\\_nativity\\_by\\_reverend\\_john\\_mazurek.pdf](http://www.eclipses.biz/printable_versions/jesus_nativity_by_reverend_john_mazurek.pdf)

\*\*

## The Schmersanski Technique of Homeopathic Tissue Cell Salt Application

by

Count Gramalkin.com

The Schmersanski Technique of Homeopathic Tissue Cell Salt Application Of Dr W.H. Schuessler's Inorganic Biochemic Theory In The San Francisco School of Sidereal Astrology Technique of Delineation Current Edition = 46 Pages - 17 Pages of Graphics and Charts - 29 Pages of Text available at this URL [http://www.solunar.info/printable\\_versions/schmersanski\\_cell\\_salt\\_technique\\_by\\_count\\_gramalkin.pdf](http://www.solunar.info/printable_versions/schmersanski_cell_salt_technique_by_count_gramalkin.pdf)

\*\*\*

## Fixed Stars and When They Count in Horoscope Delineation

by

Count Gramalkin.com

A two one page charts one all black one two color of the 44 major fixed stars and their delineation arranged in degree order for fast reference when checking fixed star aspects to a horoscope file available at this URL [http://www.countgramalkin.com/printable\\_versions/fixed\\_stars\\_by\\_count\\_gramalkin.pdf](http://www.countgramalkin.com/printable_versions/fixed_stars_by_count_gramalkin.pdf)

\*\*

## The Intrinsic Values of the Planets

by

Count Gramalkin

San Francisco School of Sidereal Astrology Technique Explains The Meaning or Intrinsic Values of our Cosmic Sphere Planets in Horoscope and cast lots such as Tarot Card Delineation. Current Edition = 27 Pages = 12 Pages Graphics and Charts - 15 Pages of Text

[http://www.solunars.info/printable\\_versions/intrinsic\\_values\\_of\\_the\\_planets\\_by\\_count\\_gramalkin.pdf](http://www.solunars.info/printable_versions/intrinsic_values_of_the_planets_by_count_gramalkin.pdf)

\*\*

## Stars = Cards Delineation Cross-Reference and Tarot Layouts

by

Count Gramalkin

The Cross Reference Between the Planets and the Tarot Cards also Many Other Things and Seven Great Tarot Card Layout Charts Adequate to Deal With Most Any Situation available at this URL. [http://www.solunar.info/printable\\_versions/count\\_gramalkin\\_layouts\\_stars\\_cards\\_chart.pdf](http://www.solunar.info/printable_versions/count_gramalkin_layouts_stars_cards_chart.pdf)

\*\*

## The Art of Horoscope Production

by

Count Gramalkin

In the physical production of the horoscope, the actual piece of paper with the astrological map of our cosmic sphere drawn on it there are two main varieties of horoscope charts in the complete file format baseline, base charts and composite charts which are color coded to expedite quick recognition. Current Edition = 46 Pages - 17 pages of Graphics and Charts - 29 Pages of Text available at this URL.

[http://www.westernsiderealastrologyzodiacyrilfaganhoroscopetarotreading.us/printable\\_versions/horoscope\\_production\\_by\\_count\\_gramalkin.pdf](http://www.westernsiderealastrologyzodiacyrilfaganhoroscopetarotreading.us/printable_versions/horoscope_production_by_count_gramalkin.pdf)

\*\*

## The Art of Horoscope Synthesis

by

Count Gramalkin

The Art of Horoscope Synthesis is one of the major keys to being able to actually read and comprehend the essence of the meaning or delineation of the horoscope chart. It is the manner or technique with which one approaches the horoscope. The combining of parts or elements as to form a whole. The Art of Synthesis is how we apply the Art of Delineation. The Intrinsic Values of the Planets and Angles are the elements of the Art of Delineation. The Art of Delineation is how we interpret the Technique of Delineation. Current Edition = 48 Pages - 17 pages of Graphics and Charts - 31 Pages of Text. [http://www.westernsiderealastrology.us/printable\\_versions/art\\_of\\_horoscope\\_synthesis\\_by\\_count\\_gramalkin.pdf](http://www.westernsiderealastrology.us/printable_versions/art_of_horoscope_synthesis_by_count_gramalkin.pdf)

\*\*

## Horoscope Wheel - San Francisco School of Sidereal Astrology

A one page printable version of the blank horoscope wheel recommended by the San Francisco School of Sidereal Astrology as the most efficient wheel to use drawing hand drawn horoscopes. Horoscopes must be hand drawn as at the time of this publication zero computer programs are available that will correctly produce a horoscope much less the complete full file horoscopes baseline. [http://www.loveromancemoneyhealthadvicetarotastrologyreadingfortunetold.us/printable\\_versions/horoscope\\_wheel.pdf](http://www.loveromancemoneyhealthadvicetarotastrologyreadingfortunetold.us/printable_versions/horoscope_wheel.pdf)

\*\*\*

## All Of THE ABOVE

This Library Loads Current Edition - Quick Check Source Page For Newest Editions

Create a Count\_Gramalkin Folder On Your Desktop And Save As The Newest Edition

[http://www.countgramalkin.com/book\\_information.html](http://www.countgramalkin.com/book_information.html) - [http://www.countgramalkin.com/gramalkin\\_layout\\_chart.html](http://www.countgramalkin.com/gramalkin_layout_chart.html)

Also Free Horoscope and Midpoint Calculator Programs

<http://www.halloran.com> Customize Use Fagan Zodiacal Sidereal Zodiac Csmpanus Houses Birthplace - <http://www.noendpress.com/pvachier/midpoints/index.php>

\*\*\* \*\* \*

\*\*

## "Sidereal Horoscopes"

By

Count Gramalkin

\*\*

Western Sidereal Astrology Zodiacal Fixed Zodiac Astrologer - Tarot Reading

Spiritual Evolution Self Realization Truth Seeker Disciple - The Truth Changes Not

San Francisco School of Sidereal Astrology Intrinsic Values of the Planets Technique of Delineation

<http://www.countgramalkin.com> 1 877 322 7238 Toll Free+Fax CountGramalkin@CountGramalkin.Com

Attention Pattern Manipulates Mystic Law Creating Experience Attentions on God or Not Reprogram Attention to Perpetual Meditation

Each Edition Has New Material Added To It. The Highest Number / Date Edition Is The Newest Edition.

The Allopathic Psychiatrist Asks the Patient How They Feel About It The Great Reader Tells Them

The Path of the Planets Around the Sun Is The Zodiac and Path Don't Move

The Cardinal Sin of Mankind is Mistaking the Apparent For The Real

\*\*

### "The Mystery Revealed"

\*\*

\*\*\* \*\* \*

"Order "The Mystery Revealed" eBook Current Edition by Count Gramalkin Copyright and TradeMark <sup>TM</sup> ©

The Reverend Professor John Mazurek said; "Oh Gramalkin, I read your book. In fact I read it twice. Very good Gramalkin, very good".

"Anyone, you too may make a fortune or save one doing your own Readings with the Intrinsic Value Technique in The Mystery Revealed."

\*

"A timeless manuscript that will remain valid."

To order The Reverend Count Gramalkin eBook "The Mystery Revealed" Premium Edition which explains the mystery of life, how to better read and predict it and what to do about it PayPal a \$29 minimum donation to [eBook@Gramalkin.Com](mailto:eBook@Gramalkin.Com) = eBook at Gramalkin.Com. The Mystery Revealed eBook will be emailed to your PayPal email address. Copy and paste or state eBook Title in order form when possible. Log in to your PayPal Account. [www.paypal.com](http://www.paypal.com) - Title = "The Mystery Revealed"

\*

The Count Gramalkin eBook "The Mystery Revealed" that gives a realistic explanation of the "The Mystery of Life How to Read and Predict it and What To Do About It", also How To Do Your Own Astrology and Tarot Card Readings (all cast lots), is being released beginning with the as is early rough draft Current Edition of the finished product and it is still way worth the minimum donation. The information pages articles on [www.countgramalkin.com](http://www.countgramalkin.com) are excerpts from the Mystery Revealed and are included in the book as well as the current edition of the original text. Including the Introduction to Tarot, the Table of Contents and for all you Astrologer buffs there is also the San Francisco School of Sidereal Astrology Technique of Delineation; the Count Gramalkin "Sidereal Horoscopes Chronicles" and Gramalkin's address on "Learn to Tell Your Own Fortune". This address explains God, the meaning of life, the secret of the cosmos how to read / predict it and what to do about it, astrology, a bit on health care, the San Francisco School of Sidereal Astrology Intrinsic Value of the Planets Delineation Technique applied to Horoscopes and Cast Lots such as Tarot.

The Count Gramalkin Changes in Green Club

Also available is the Count Gramalkin "Changes in Green Club", a minimum sweet sixteen dollar a month donation eMail information service subscription membership club related to - The Mystery of Life How To Better Read and Predict It and What To Do About It - for the extremely motivated Spiritual Evolution Self Realization Truth Seeker Astrology, Tarot Cast Lots Reader Mavens. A lot of professional readers use this service. People who are trying to improve the quality of their readings and enhance the life condition of their clients and themselves who need the newest edition. Sort of an ongoing class scenario of whatever class notes come up and all changes or additions that are made in the material. Count Gramalkin policy to keep track of changes and additions to the material is all changes and additions are coded in green type on the work sheet. Having a copy of the worksheet as well as the finished product lets one quickly locate changes in the text. An attempt is made to incorporate response to a certain amount of relevant query into the published material. Query related to the mystery of life how to better read and predict it and what to do about it. Response related to astrology, tarot, spiritual evolution, health, doing ones own readings technique rather than giving you a reading. Give a man a reading they have a moment teach a man to read they have a lifetime. Minimum donations of sixteen dollars a month via PayPal emailed to [Changes\\_In\\_Green\\_Club@CountGramalkin.Com](mailto:Changes_In_Green_Club@CountGramalkin.Com) received by the first of the month receive the month's information eMailed to your PayPal EMail address. The amount of information forthcoming ebbs and flows. Zodiacal Western Sidereal Astrology Horoscopes Tarot Reading and Western Sidereal Zodiac Astrologer

Good luck love thank you amen Om to us one and all, Count Gramalkin

1-877-322-7238 Toll Free - [CountGramalkin@CountGramalkin.Com](mailto:CountGramalkin@CountGramalkin.Com) - *Count Gramalkin* <sup>TM</sup> © [StarManPress.Com](http://StarManPress.Com) 1970 ###-30-\*\*\*

\*\*\*\*\*

\*\*\*

# "Sidereal Horoscopes"

By

Count Gramalkin

\*

Western Sidereal Astrology Zodiacal Fixed Zodiac Astrologer - Tarot Reading

Spiritual Evolution Self Realization Truth Seeker Disciple - The Truth Changes Not

San Francisco School of Sidereal Astrology Intrinsic Values of the Planets Technique of Delineation

http:www.countgramalkin.com - 1.877.322.7238 Toll Free+Fax - CountGramalkin@CountGramalkin.Com

\*

## "Planets = Signs Glyphs And Constellation Dates"

\*v3-6.12\*

<i>Aries</i>	=	♈	=	♂	=	<i>Mars</i>
<i>Taurus</i>	=	♉	=	♀	=	<i>Venus</i>
<i>Gemini</i>	=	♊	=	☿	=	<i>Mercury</i>
<i>Cancer</i>	=	♋	=	☾	=	<i>Moon</i>
<i>Leo</i>	=	♌	=	☼	=	<i>Sun</i>
<i>Virgo</i>	=	♍	=	☿	=	<i>Mercury</i>
<i>Libra</i>	=	♎	=	♀	=	<i>Venus</i>
<i>Scorpio</i>	=	♏	=	♇	=	<i>Pluto</i>
<i>Sagittarius</i>	=	♐	=	♃	=	<i>Jupiter</i>
<i>Capricorn</i>	=	♑	=	♄	=	<i>Saturn</i>
<i>Aquarius</i>	=	♒	=	♅	=	<i>Uranus</i>
<i>Pisces</i>	=	♓	=	♆	=	<i>Neptune</i>

\*\*

GMT 0° Fagan Spica 29° 16':5" Zodiacal Sidereal Constellations Signs Dates Epoch 2000

\*\*

<i>Aries</i>	=	<i>April 14th</i>	<i>Libra</i>	=	<i>Oct 17th</i>
<i>Taurus</i>	=	<i>May 15th</i>	<i>Scorpio</i>	=	<i>Nov 16th</i>
<i>Gemini</i>	=	<i>June 15th</i>	<i>Sagittarius</i>	=	<i>Dec 16th</i>
<i>Cancer</i>	=	<i>July 18th</i>	<i>Capricorn</i>	=	<i>Jan 16th</i>
<i>Leo</i>	=	<i>Aug 17th</i>	<i>Aquarius</i>	=	<i>Feb 14th</i>
<i>Virgo</i>	=	<i>Sept 17th</i>	<i>Pisces</i>	=	<i>March 15th</i>

\*\*\*



\*\*\*\*\*

\*\*\*

# "Sidereal Horoscopes"

By

Count Gramalkin

\*\*

Western Sidereal Astrology Zodiacal Fixed Zodiac Astrologer - Tarot Reading

Spiritual Evolution Self Realization Truth Seeker Disciple - The Truth Changes Not

San Francisco School of Sidereal Astrology Intrinsic Values of the Planets Technique of Delineation

<http://www.countgramalkin.com> 1.877.322.7238 Toll Free+Fax CountGramalkin@CountGramalkin.Com

\*\*

## "Marilyn Monroe Typical Bare Bones Skeleton Generic Horoscope Chart"

\*\*

One may observe from the Count Gramalkin Marilyn Monroe example horoscope displayed above that the real deal is a radically advanced level of accuracy, quality and completion vastly superior to the also displayed not a real horoscope typical bare bones skeleton generic chart missing most of the relevant data rendition horoscopes and readings commonly available elsewhere. One of those seeking to attain the best you DO GET what you paid for deals. The Reverend Count Gramalkin is a direct heir of the modern day father of astrology Cyril Fagan of Dublin, Ireland (1896-1970) and is senior out of Fagan's chosen heir The Reverend Professor John Mazurek (1919-2003) Director of The San Francisco School of Sidereal Astrology.

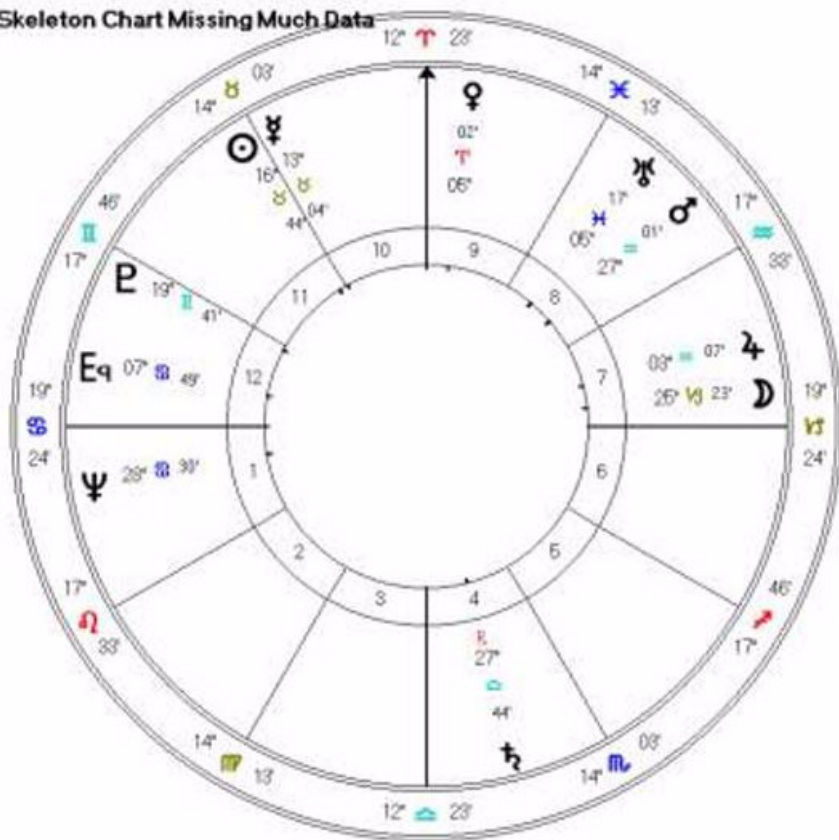
Angels can fly because they take themselves lightly

Good luck love thank you amen Om,

The Reverend Count Gramalkin

**Marilyn Monroe Skeleton Chart Missing Much Data**

Female Chart (3)  
Jun 1 1926  
9:30 am PST -6:00  
Los Angeles CA, USA  
34°03' 118°W18'  
Geocentric  
Fagan-Allen  
Companus  
Mean Nodes

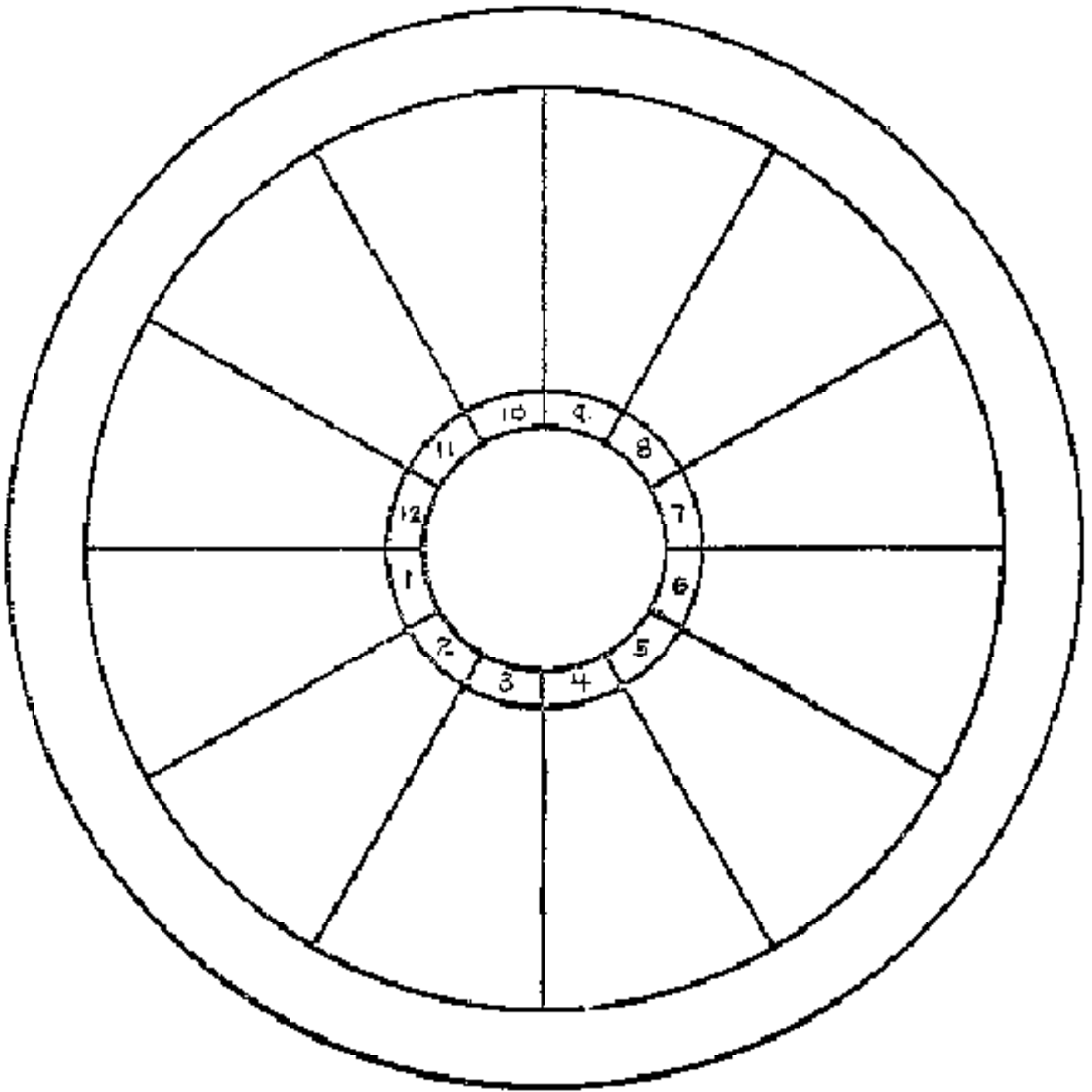


\_\_\_\_\_

\_\_\_\_\_

\_\_\_\_\_

\_\_\_\_\_



“Count Gramalkin Layout Chart”

Most of the Layouts are of ancient lineage. Always start with a Complete Deck all facing the same direction. Be calm focus on query. Ask Grace of the Angels of Light. Shuffle 7X. Left Hand Cut 3 Piles. Restack “As You Will” To 1 Pile, Deal. Layout and read cards in numerical order.

-----\*

The “Octoscope” General Reading Layout

	MC			1 & 9 = Self
	#10			2 = Livelihood
	#3			3 & 10 = Status In World
	#2	#4		4 = Home
Asc #9	#1	#13	#5 #11	5 & 11 = Others
	#8	#6		6 = Health
	#7			7 & 12 = Spouse
	#12			8 = Death
				13 = Resolution

The “Three Yes and No Questions” Layout  
 Ask 3 Questions Then Begin Again.  
 Per Query: Shuffle, Cut, & Count Every 7th Card.  
 Center Card Counts Double. Count + & - = Yes\No & Maybe

#1	#2	#3	#4	#5
	--			
#1	#2	#3	#4	#5
	--			
#1	#2	#3	#4	#5
	--			

The “Past Present and Future” Layout

(“Of Any Case & Time Period”)  
 #4 = Past, #11 = Present, #18 = Future  
 Left 3 = Inner, Right 3 = Outer Manifestations (e.g. Past 5,6,7)

#15	#16	#17	#18	#19	#20	#21
		---				
#8	#9	#10	#11	#12	#13	#14
		---				
#1	#2	#3	#4	#5	#6	#7

The “Pentacle” Layout

			# 1 = Karma
	#2	#3	# 4 = Physical
	#1		# 7 = Soul
#15		#5	# 10 = Spirit
#13		#4	# 13 = Spiritual Evolution
#14		#6	# 2, 5, 8, 11, 14 = Inner Manifestations
	#16		# 3, 6, 9, 12, 15 = Outer Manifestations (e.g. #3 = outer of Karma)
#11		#9	# 16 = Resolution
#10		#7	
#12		#8	

The “Celtic Cross” Layout.

	Pick # 1 & Save. Shuffle Deck.
	Stack # 2 on # 1 Crossed by # 3.
	# 1 = Query. 2 = Case. 3 = Situation.
	4 = Ideal. 5 = Solution. 6 = past.
	7 = Future. 8 = Self. 9 = Home.
	10 = Hopes & Fears. 11 = Outcome.
	#4 #11
	#1 #10
	#7 2& #6
	#3 #9
	#5 #8

The “Talking Tarot” Layout

Layout Right to Left. Write Message Left to Right  
 in Station # Order. Read Left to Right as Letters Phonetically.  
 Place a / Between 2 Vowels or Consonants In A Row.

	#13 (2nd deck)
	#12 #11 #10 #9 #8
	#7 #6 #5 #4 #3 #2 #1
	#7 #6 #5 #4 #3 #2 #1
	#12 #11 #10 #9 #8
	#13 (1st deck)
	Stop Card 1 or 2 = redo. Stop Card = End.
	Say Letter As In Trump Name?

The “Twelve House” Layout

Any Cycle Timed in 12ths

	#10
	#11 #9
	#12 #8
	#1 #13 #7
	#2 #6
	#3 #5
	#4
	13 = Resolution

The Stations are laid out as arrowheads.

“Count Gramalkin Star=Card Delineation Cross-Reference”

“Reversed Card Technique”: Shuffle 7X, Left Hand cut 3 even piles. Reverse center pile & restack to 1 pile. Shuffle 7X, cut 3 piles & restack “as you will” to 1 pile. Reversed cards = lower self manifestation. Some decks switch card numbers. Sun= Spirit. Moon= Soul. Mercury= Intellect. Venus= Love. Mars= Sex. Jupiter= Win. Saturn= Loose. Uranus= Intuition. Neptune= Imagination. Pluto= Death. Sun & Moon Illuminate, Mercury Expresses, Jupiter Venus Uranus = Good+, Mars Saturn Neptune Pluto = Bad-, Especially in Transit/Current Events.

Fire	=	Wands	Noon	Weeks	Clubs	South	Spirit (Sun)
Earth	=	Pentacles	Midnight	Years	Diamonds	North	The Physical
Air	=	Swords	Dawn	Months	Spades	East	(Intellect Mercury)
Water	=	Cups	Sunset	Days	Hearts	West	Soul (Moon)

Aces	=	Element		Read A “Sign” As it’s Motivating Planet.
Knights	=	Element In Action.		Aries = Mars   Leo = Sun   Sag = Jupiter
*				Taurus = Venus   Virgo = Merc   Cap = Saturn
Cardinal Cross	=	Kings		Gemini = Merc   Libra = Venus   Aqu = Uranus
Fixed Cross	=	Queens		Cancer = Moon   Scorp = Pluto   Pisces = Neptune
Mutable Cross	=	Pages (Jacks)		

“Major Arcana”

Planet	Card Name		Card	Constellation	Card Name	Card
	& letter		#	& letter		#
Sun	= Sun	= S	# XIX	Aries = O	= Emperor	# IV
Moon	= High Priestess	= I	# II	Taurus = V	= Hierophant	# V
Mercury	= Magician	= M	# I	Gemini = O	= Lovers	# VI
Venus	= Empress	= E	# III	Cancer = CH	= Chariot	# VII
Mars	= Tower	= O	# XVI	Leo = E	= Strength	# XI
Jupiter	= Wheel of Fortune	= E	# X	Virgo = I	= Hermit	# IX
Saturn	= World	= W	# XXI	Libra = U	= Justice	# VIII
Uranus	= Fool	= A	# 0	Scorpio = Stop	= Death	# XIII
Neptune	= Hanged Man	= Start Over	# XII	Sagittarius = T	= Temperance	# XIV
Pluto	= Judgement	= Stop	# XX	Capricorn = Stop	= Devil	# XV
				Aquarius = ST	= Star	# XVII
				Pisces = O	= Moon	# XVIII

“Court Cards”

	Kings (Cd)		Queens (Fx)		Knights		Pages (Mu)
Wands	Aries = P		Leo = V&X		Fire = E		Sagittarius = Z   Gramalkin™ ©1970
Pentacles	Capricorn = L		Taurus = U&X		Earth = R		Virgo = Y   v7-19.8
Swords	Libra = E		Aquarius = Y&C		Air = T		Gemini = A   The Tarot data is of ancient lineage.
Cups	Cancer = U		Scorpio = Y&C		Water = R		Pisces = U

“Minor Arcana”

	Wands		Pentacles		Swords		Cups
A)	Fire = B		Earth = I	(A)	Air = A		Water = E (A)
2)	Mars@Aries = I		Jupiter@Cap = O	2	Moon@Libra = I		Venus@Cancer = K (2)
3)	Sun@Aries = M		Mars@Cap = L	3	Saturn@Libra = Z		Mercury@Cancer = Y (3)
4)	Venus@Aries = J		Sun@Capricorn = F	4	Jupiter@Libra = U		Moon@Cancer = Q&H (4)
5)	Saturn@Leo = T		Mercury@Taurus = Z	5	Venus@Aqu = TH		Mars@Scorpio = A (5)
6)	Jupiter@Leo = O		Moon@Taurus = E	6	Mercury@Aqu = G		Sun@Scorpio = O (6)
7)	Mars@Leo = Y		Saturn@Taurus = A	7	Moon@Aquarius = V		Venus@Scorpio = S (7)
8)	Mercury@Sag = U		Sun@Virgo = D	8	Jupiter@Gemini = N		Saturn@Pisces = W (8)
9)	Moon@Sag = L		Venus@Virgo = I	9	Mars@Gemini = Y		Jupiter@Pisces = L (9)
10)	Saturn@Sag = A		Mercury@Virgo = SH	10	Sun@Gemini = O		Mars@Pisces = D (10)
	Wands		Pentacles		Swords		Cups